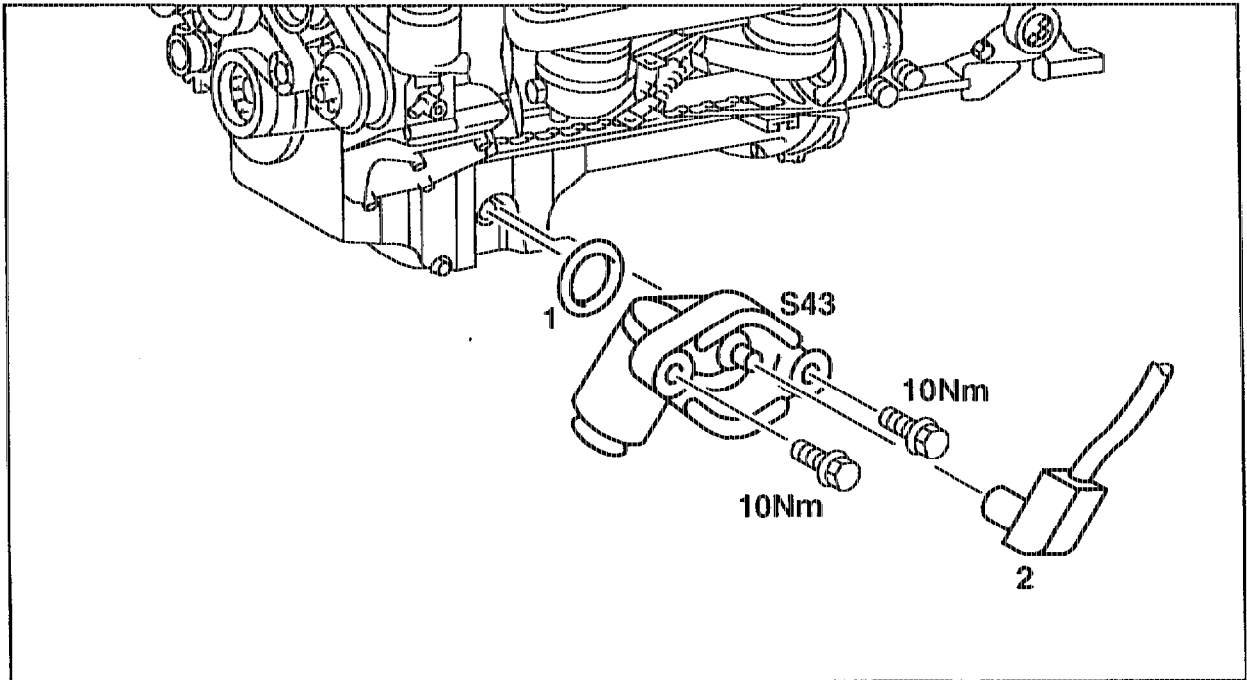


18-3300 Removing and installing oil level sensor

Preceding work:
Bottom engine compartment removed
(Maintenance Manual 6190)

Operation no. of operation texts and work units or standard texts
and flat rates:
18-4111, 4113



P18-5262-57

Engine oil	drain partially, pour in (18-0020).
Coupling (2) at oil level sensor (S43)	unplug, plug in.
Oil level sensor (S43)	remove and install.

Note

From 01/95 the oil level sensor (S43) is attached with self-tapping screws. If the oil sump is replaced, fit on oil level sensor (S43) with self-tapping screws (20 mm long, previously 25 mm long).

O-ring (1)	replace according to condition.
Engine	run, check for leaks.

Note

Function of oil level indicator, see (18-3100).