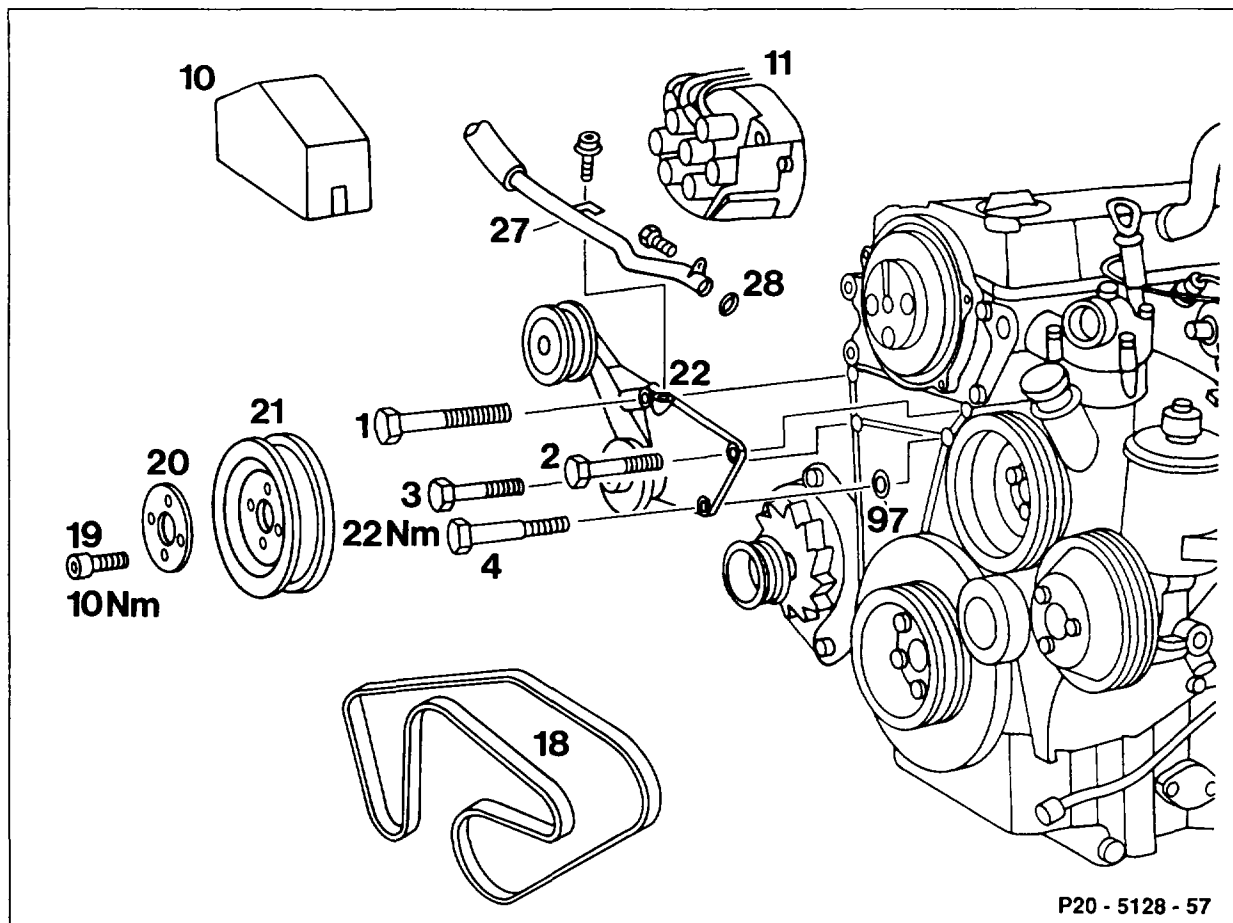


20-3140 Removing and installing viscous fan clutch bearing bracket

Preceding work:
Viscous fan clutch removed (20-3120).



- 1 M8 x 80 bolt + washer
- 2 M8 x 65 bolt + washer
- 3 M8 x 60 bolt
- 4 M8 x 65 thrust collar bolt

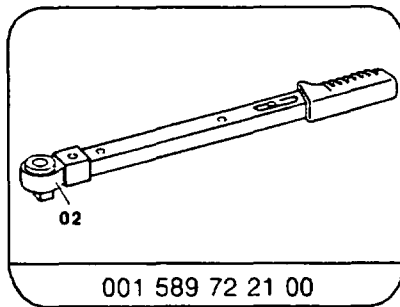
Cover (10)	remove, install.
High tension distributor (11) with ignition cable connected	unscrew, place to the side, screw on.
Screws (19) of fan belt pulley (21)	slacken, tighten (10 Nm).
Poly-V-belt (18)	remove, install (13-3420).
Belt pulley (21) and disc (20)	remove, install.
Cap of expansion tank	open, release pressure.
Heating water return line (27) at coolant pump and bearing bracket (22)	unscrew, screw on, replace seal (28).
Opening of coolant pump	seal.

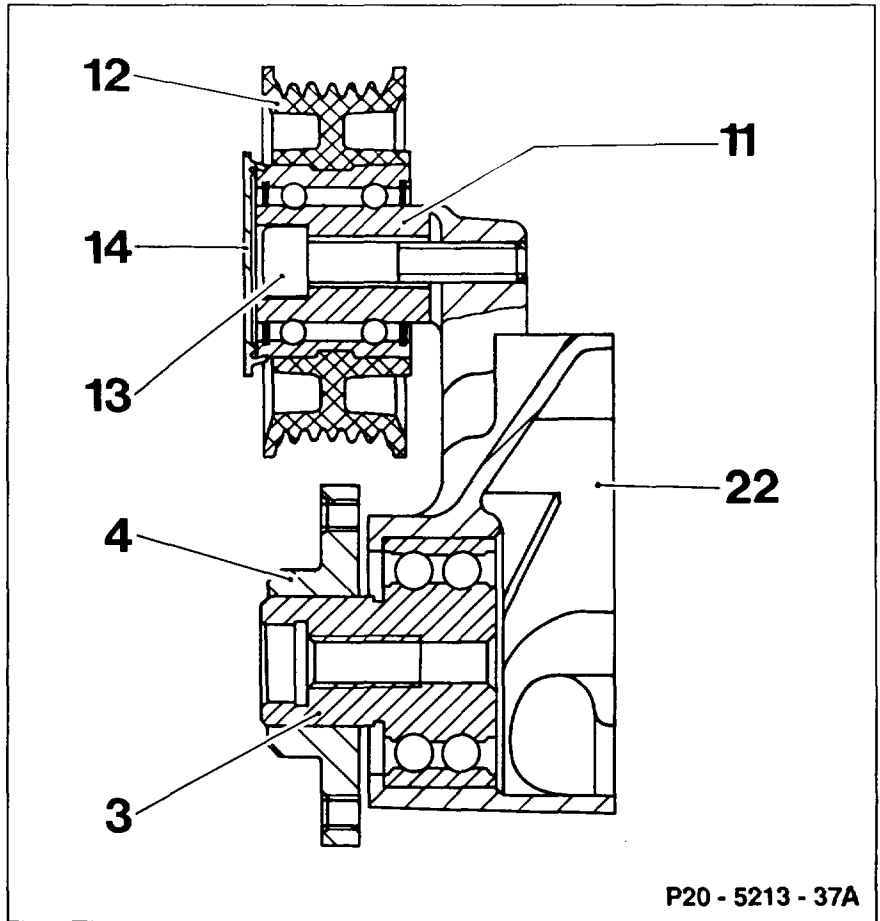
Bolts (1), (2), (3) and (4)	unscrew, screw on (22 Nm).
Thrust collar bolt (4)	coat with sealant 002 989 00 20 10.
Bearing bracket (22)	remove upward.
Seal (97) in timing case cover	replace.
Coolant	pour into system (20-0100).
Cooling system	check for leaks (20-0170).

Tightening torques in Nm

High tension distributor screws	10
Fan belt pulley screws	10
Viscous fan clutch bearing bracket bolts	22

Special tool



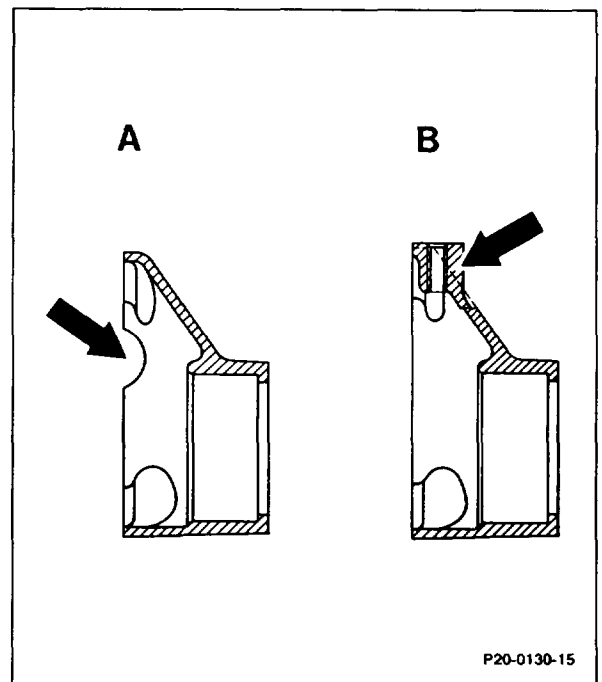


Notes

Modification to fan bearing bracket

A tapped hole (arrow B) is provided for attaching the heating water return pipe.

The previous recess (arrow A) is eliminated.



Tapped hole at fan bearing bracket, production breakpoint: 10/1985

Model	Engine	Engine end no.		Vehicle ident end no.	
		manual transmission	automatic transmission	A	F
107.041	103.982	000110	000557	*	*
124.026	103.940	000862	001039	*	*
124.030 124.090	103.983	001765	007120	*	*
126.020	103.941	000124	000432	*	*
126.024 126.025	103.981	000280	001723	*	*

* not recorded