

- Picture -

Mode : MDmode

FIN/MD : 129068

Catalog no. : 44J

VIN :

Majorassembly :

Salesdesignation: SL500 USA

Major assembly MD :

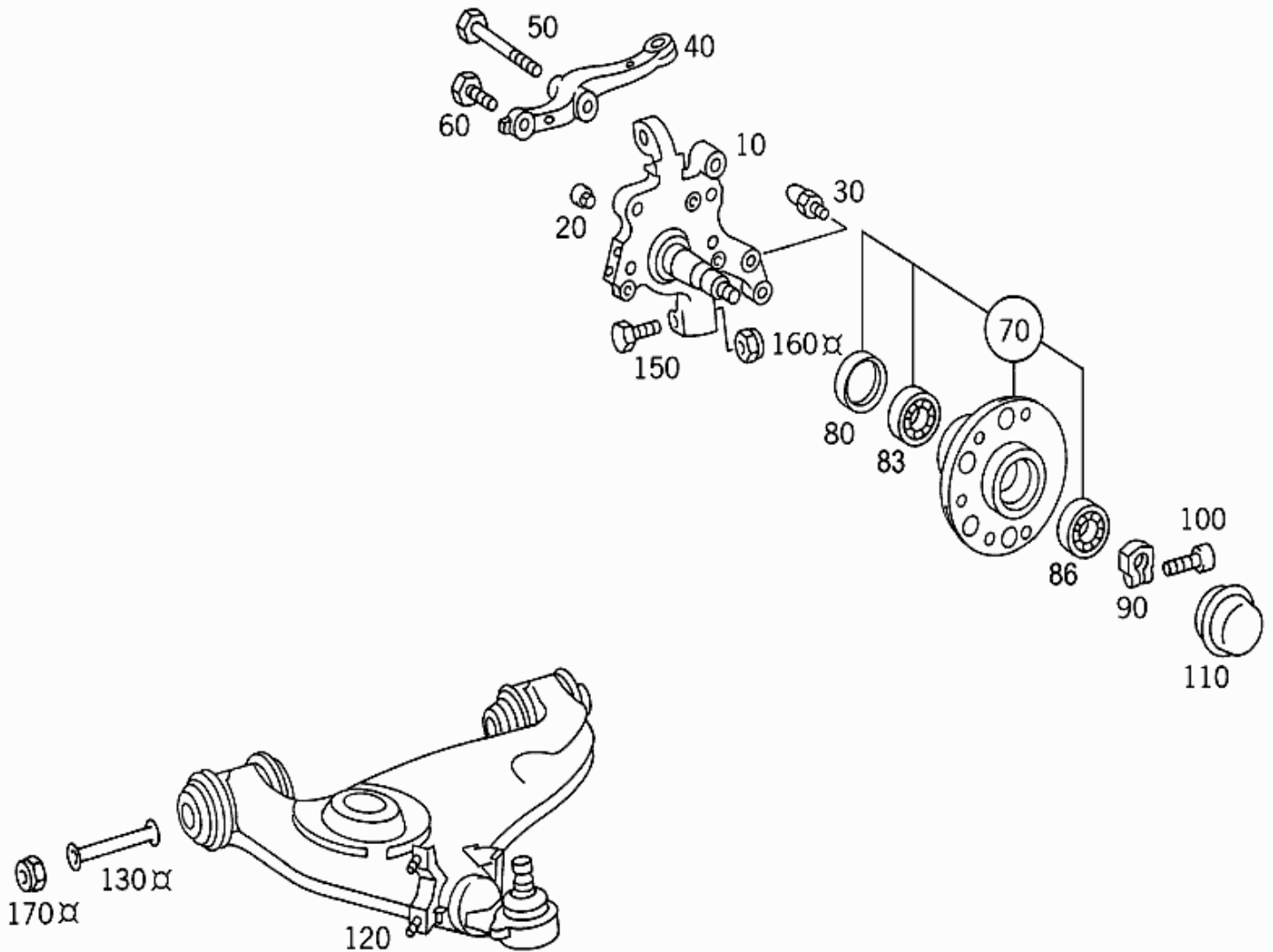
Assortment class : Car

Group : 33 - FRONT AXLE

Market : NorthAmerica

Subgroup : 030 - STEERING KNUCKLE AND CONTROL ARM

Picture number : B3303000041.051118



- Parts list -

Mode :	MD mode	FIN/MD :	129068
Catalog no. :	44J	VIN :	
Major assembly :		Sales designation :	SL 500 USA
Major assembly MD :		Assortment class :	Car
Group :	33 - FRONT AXLE	Market :	North America
Subgroup :	030 - STEERING KNUCKLE AND CONTROL ARM		

Item no.	Part number	Designation/description	Quantity	Version
10	A 129 330 02 20	<b>STEERING KNUCKLE</b> LEFT	001	
10	A 129 330 03 20	<b>STEERING KNUCKLE</b> RIGHT	001	
20	A 201 332 01 74	<b>PIN</b> (CENTERING PIN) <b>Optional with:</b> A 201 332 02 74	002	
20	A 201 332 02 74	<b>PIN</b> (CENTERING PIN) <b>Optional with:</b> A 201 332 01 74	002	
20	A 129 332 00 74	<b>PIN</b> (CENTERING PIN) <b>Optional with:</b> A 201 332 02 74	002	
30	A 129 330 00 80	<b>PIN</b> STEERING STOP	002	
40	A 129 332 07 20	<b>STEERING ARM</b> LEFT	001	
40	A 129 332 06 20	<b>STEERING ARM</b> RIGHT	001	
50	A 129 990 14 01	<b>SCREW</b> STEERING ARM TO STEERING KNUCKLE	002	
60	A 129 990 13 01	<b>SCREW</b> STEERING ARM TO STEERING KNUCKLE	002	
70	A 129 330 05 25	<b>FRONT WHEEL HUB</b>	002	
80	A 019 997 88 47	<b>SEAL RING</b>	002	
83	A 002 980 19 02	<b>TAPERED ROLLER BEARING</b> INSIDE	002	
86	A 002 980 20 02	<b>TAPERED ROLLER BEARING</b> <b>Replaced by:</b> A 211 980 00 02	-	
86	A 211 980 00 02	<b>TAPERED ROLLER BEARING</b> <b>Replaced by:</b> A 002 980 65 02	-	
86	A 002 980 65 02	<b>TAPERED ROLLER BEARING</b> OUTSIDE	002	
90	A 116 334 03 72	<b>NUT</b> FRONT WHEEL HUB TO STEERING KNUCKLE	002	
100	N 000912 006176	<b>SCREW</b> FRONT WHEEL HUB TO STEERING KNUCKLE	002	
110	A 168 357 00 89	<b>LOCKING CAP</b> FRONT WHEEL HUB TO STEERING KNUCKLE	002	
120	A 124 330 34 07	<b>TRANSVERSE CONTROL ARM</b> BOTTOM LEFT	001	
120	A 124 330 35 07	<b>TRANSVERSE CONTROL ARM</b> BOTTOM RIGHT	001	
130	A 201 333 00 43	<b>CLAMPING PIECE</b>	004	
150	A 129 990 10 01	<b>SCREW</b> LOWER CONTROL ARM TO STEERING KNUCKLE	002	

160	N 910113 012003	<b>NUT</b> LOWER CONTROL ARM TO STEERING KNUCKLE	002
170	A 201 333 00 72	<b>NUT</b> LOWER CONTROL ARM TO FRAME	004
180	A 124 330 06 75	<b>REPAIR KIT</b> LOWER CONTROL ARM TO FRAME	002
190	A 201 330 00 18	<b>REPAIR KIT</b> ECCENTRIC PIN	004