

# AMG

CATALOG

KATALOG

CATALOGUE





## **AMG** *Stretching the horizons of motoring enjoyment*

The AMG modified Mercedes: a machine of heroic capabilities... designed to reward the discriminating driver who claims the horizon as personal property. The AMG birthright: sired by a Daimler-Benz development engineer... in keeping with the classic styling and honored tradition of the most famous and respected name in the world of motoring. In 1967, Hans-Werner Aufrecht and Erhard Melcher combined their unique talents and sensitivities to form the company known as AMG. Their goal: provide the worldwide Mercedes market with an exclusive line of conversion options, parts, and accessories. The results: creation of new standards of unexcelled performance, unequaled comfort and distinctive styling.

At its very inception, AMG's dedication was to two principles. First, AMG motor cars would be created a little more equal than all other cars. Second, but equally important, AMG components and installation methods would be unfailingly complimentary to the appearance and performance standards set by Mercedes. There has been no deviation from these high standards over the years. In fact, AMG's firm commitment to excellence has established an international benchmark by which all others are judged.

Aufrecht and Melcher are singular examples of Germany's national devotion to technical accomplishment and high-performance technology. Both are acknowledged masters in racing and production car engineering, applauded by a motoring public that immediately recognized the outstanding quality of their work.

Today, Hans-Werner Aufrecht continues at the helm of the AMG flagship... while Erhard Melcher has become one of the principal suppliers of custom-crafted camshafts for the firm. From its beginnings in an old mill in the little Württemberg village of Burgstall, AMG has expanded into handsome modern quarters in Affalterbach, just outside Stuttgart. The uncompromising dedication of Herr Aufrecht and the old-world skills of his employees are the foundation for an international distribution network which now includes offices in the United States, Austria, Italy, France, Great Britain, Finland, Japan, India, Indonesia, and the Persian Gulf States.

### **Why invest in AMG enhancements?**

From AMG's executive offices, engineering quarters, drawing boards, and brainstorming sessions to its engine building facility, dynamometer cell, suspension lab, special-options section, and upholstery shop, the company has combined its extensive racing experience with the very best in design, technology, and equipment to build the best-performing, most desired luxury cars on the market. By focusing solely on the modification of Mercedes, the finest of all production cars, AMG has grown from its birth in the old mill to become the only comprehensive source of Mercedes luxury and performance options worldwide.

We think you will find the exclusive genre of AMG modifications appealing for the same reasons you were attracted to Mercedes. AMG lets you make a bold personal statement in a dynamic motoring spirit: AMG is *the* visual expression of this spirit.

### **Installation service in a class by itself**

Every AMG installation/service facility is equipped to offer you installation services and no-nonsense warranty protection. Our nationwide network of specially trained technicians will install your AMG components according to precise specifications of our factory design engineers.

### **AMG: starting now!**

Once you have considered the various categories of parts and accessories... shopping becomes easy. The only difficulty is selecting from among the exceptional options available to you—a problem, we might add, which is certain to keep you entertained for hours.

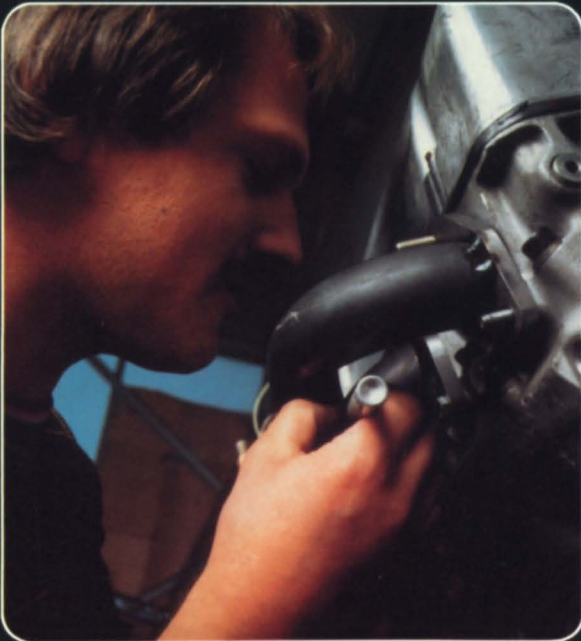
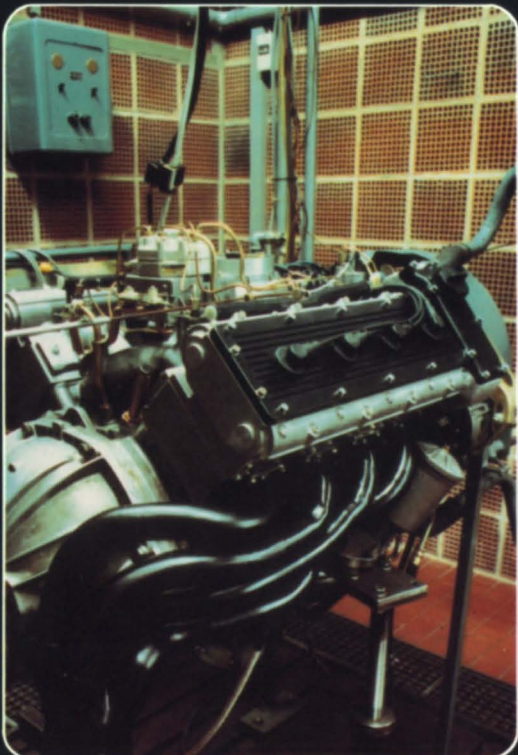
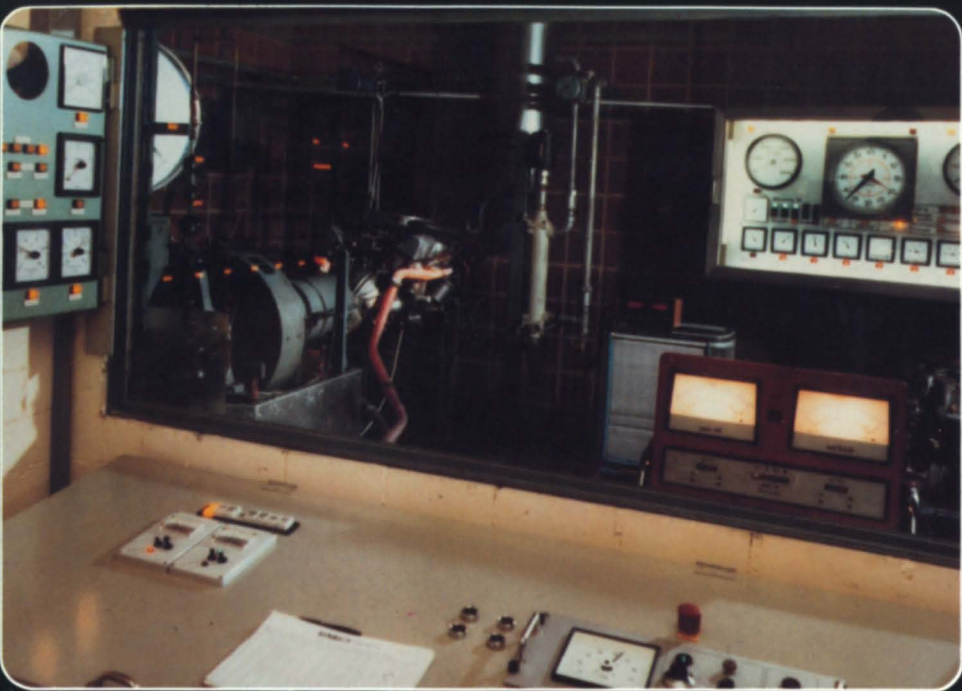
Close your eyes... and imagine the Mercedes of your dreams, graced with unmistakable character and individuality. Consider the many AMG aerodynamic/appearance enhancements and the performance conversion kits offered in the following pages.

Open your eyes... and use the following pages to build your *own* monument to uncompromising tradition. Your blueprint: the Order Form in the center of this catalog.

The AMG modified Mercedes — committed to a history of automotive excellence — built with the future in mind.









### **Aerodynamic enhancements**

Aerodynamics: the study of how to make the meeting of *object* and *air* as graceful as natural law will allow. AMG and Mercedes share a passion for this subject. Our ongoing research and implementation of new design applications seem to make these motorcars immune to conventional laws of physics.

Think for a moment about the difficulties of overcoming the wind. Mercedes' streamlined designs make them among the most sleek in the world. So... what happens when AMG enhancements increase their performance, making them even *faster*? Of course, they still cleave the air cleanly, cheating the wind just as they were intended to... but AMG aerodynamic enhancements also increase road-holding and stability, thus assuring increased driving safety as well.

The wind tunnel is our laboratory; the open road is our easy chair. Countless hours of research and testing yield the results we seek... the results others covet: the secret to AMG's distinctive appearance and uncanny tenacity to the state-of-the-aerodynamic-art.

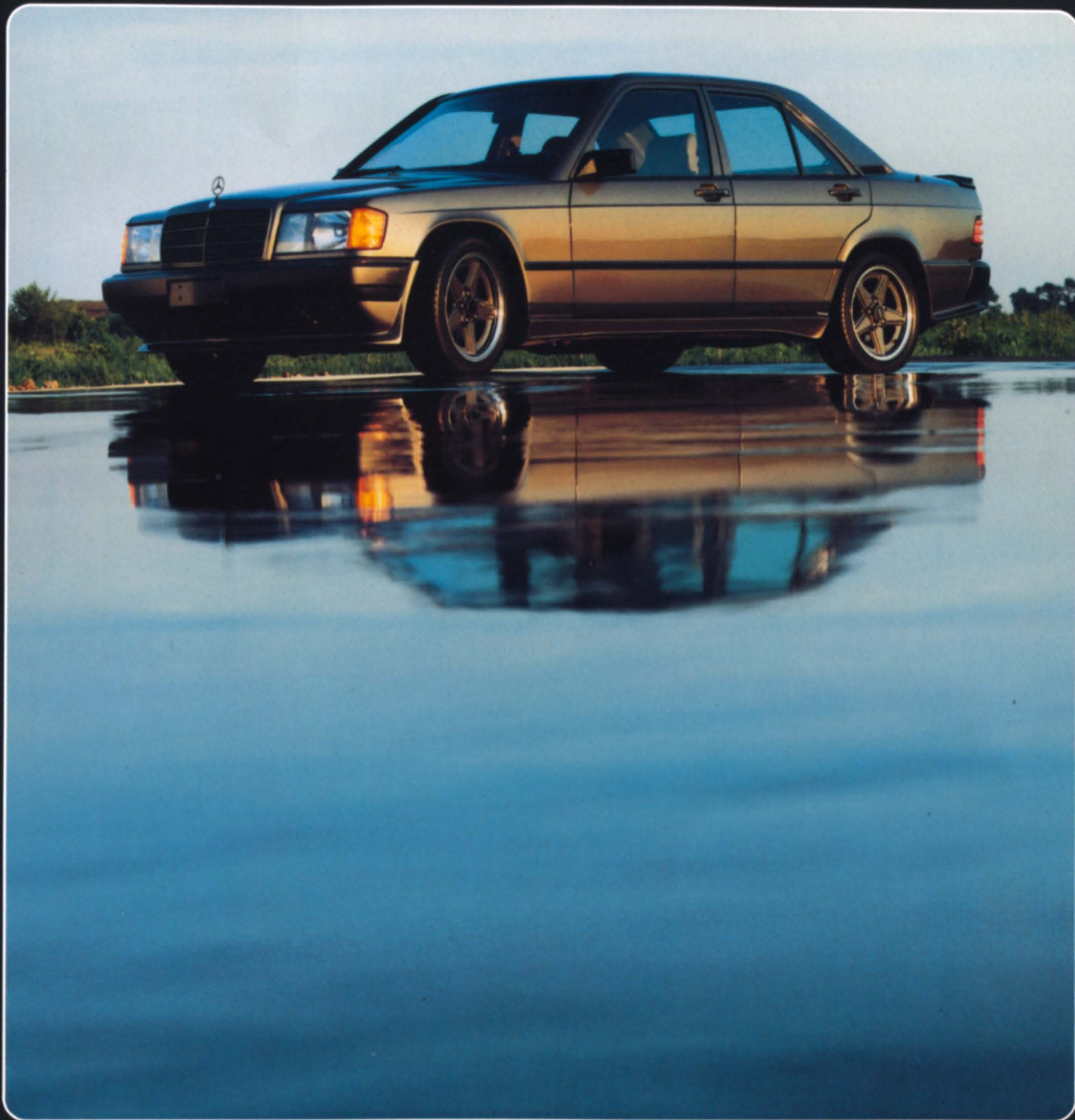
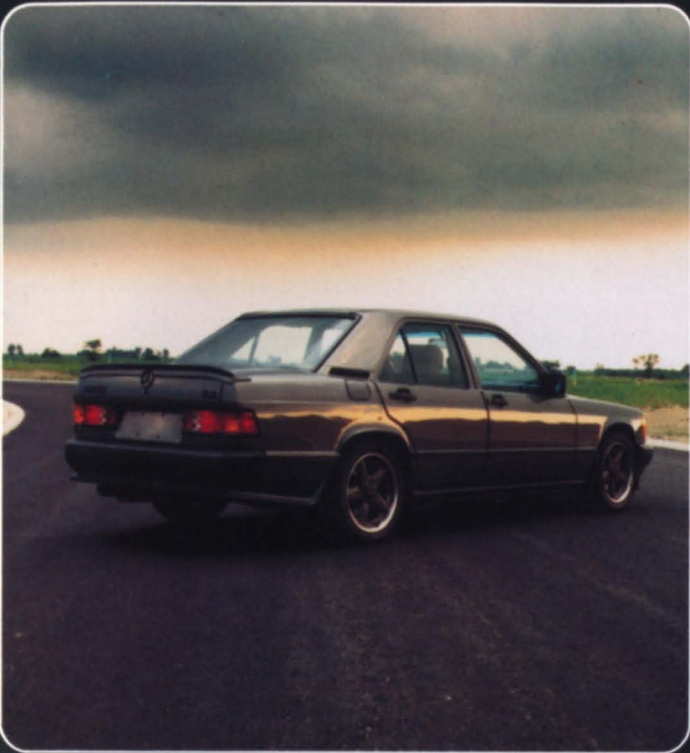
For maximum durability and fit, virtually all of our front air dams, rear spoilers, and side and rear skirts are made in Germany of PU-Rim — a pliable plastic capable of withstanding the most abusive curbs. And even as you read this, we are busily converting the final 10 percent of our body parts to PU-Rim. Most important, these pieces reduce lift up to 45 percent for better road adhesion, and reduce the drag coefficient for better fuel economy and higher top speed.

From the tremendous roar of the big fans in the wind tunnels come placid ease and stability on the road. Distinctive styling never felt so good.



Above and below, AMG Wide Body versions of the 190E (W-201) that allow use of 7" x 15" or 8" x 16" alloy road wheels.





*USA 190E (W-201) Body Kit includes front air dam, rear spoiler, side and rear skirts. 6.5" x 16" or 7" x 15" road wheels are suggested.*





*Front and rear views, European SEC (W-126C) featuring full AMG aerodynamic and cosmetic treatment.*



*Wide Body SEC conversion that allows the use of 9" x 16" front and 10" x 16" rear wheels.*



*AMG treatment of the USA SEC.*





*A European SEL (W-126) with AMG styling options.*



*The W-116 body style, predecessor of today's big sedans, in full AMG regalia.*





*AMG's high performance version of the mid-size W-123 coupe body style.*



*A sedan in the W-123 body style.*



*AMG options can even enhance the W-123 station wagon.*



W-201  
See Pages 4 and 5



190E: USA Model  
190E: European Model

#### Aerodynamic and Appearance Enhancements

<b>Body Kits</b>	
USA Body Kit: front air dam; rear spoiler; side and rear skirts. 6.5 x 16 or 7 x 15 wheels suggested	\$1,245.00
"Wide" Body Kit: integrated front air dam/ bumper assembly & 2 fenders; side & rear skirts; rear spoiler & quarter panel flares. 7 x 15 or 8 x 16 wheels suggested	\$3,250.00
<b>Front Air Dam</b>	
USA Only	\$ 295.00
European Only	\$ 295.00
Side Skirts	\$ 400.00
Rear Deck Lid Spoiler	\$ 250.00
<b>Rear Skirt</b>	
USA Only	\$ 400.00
European Only	\$ 400.00

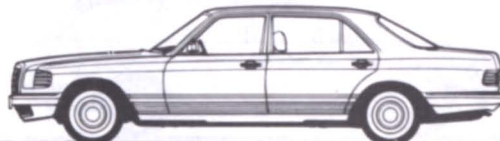
<b>Performance Enhancements</b>	
Sport Exhaust System	\$ 695.00
145 hp Engine Kit	call

<b>Suspension and Handling Enhancements</b>	
Lowered Suspension Kit: 4 springs and AMG gas pressure shocks	\$1,350.00
<b>AMG Wheels* price each wheel</b>	
6.5 x 16	\$ 295.00
7 x 15	\$ 350.00
8 x 16 wide body only—Silver Center	\$ 350.00
8 x 16 wide body only—Painted Center	\$ 385.00

<b>Interior/Exterior Appointments</b>	
<b>AMG Steering Wheel Type II</b>	
Black	\$ 375.00
Color*	\$ 595.00
<b>Matching Wood Console Compartment</b>	
Burl Wood	\$ 250.00
Zebra Wood	\$ 215.00
European Headlamps	\$ 300.00
<b>Shift Knob</b>	
Burl Wood	\$ 295.00
Zebra Wood	\$ 170.00
Leather*	\$ 195.00

<b>Wood Kit to Match Factory</b>	
<b>Zebra Wood: USA Models only</b>	
<i>(Specify if optional power seats.)</i>	
4-pc. front & rear door set	\$ 250.00
7-pc. above plus glove box door, interior light & sun roof panel switches	\$ 475.00
8-pc. above plus dash roll set	\$ 595.00

W-126  
See Page 7.



300SD, 380SE & SEL, 500SEL, USA Models 1981 to present  
280S, SE & SEL, 380SE & SEL, 500SE & SEL European models

#### Aerodynamic and Appearance Enhancements

<b>Front Air Dam</b>	
For USA models	\$ 375.00
Type I: European models without wheel arch extension	\$ 350.00
Type II: European models with wheel arch extension, AMG 8 x 16 wheels suggested	\$ 350.00
Side Skirts all S & SE models	\$ 400.00
Side Skirts all SEL models	\$ 425.00
<b>Rear Deck Lid Spoiler</b>	
Type I	\$ 200.00
Type II (new design)	\$ 200.00
<b>Rear Skirt</b>	
All USA models	\$ 475.00
All European models	\$ 400.00

<b>Performance Enhancements</b>	
Tubular Exhaust Headers, V-8	\$1,295.00
Sport Exhaust System, V8 (USA models require headers)	\$1,295.00
<b>Differentials—Limited Slip or ABS/Limited Slip</b>	
3.06, 3.27 or 3.46 ratio	\$2,250.00

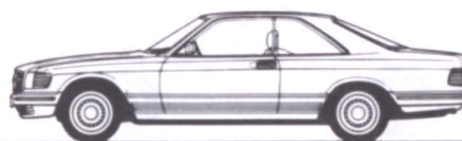
<b>Suspension and Handling Enhancements</b>	
<b>Lowered suspension Kit: 4 springs and</b>	
AMG gas pressure shocks	\$1,350.00
Self leveling suspension	\$1,700.00
<b>AMG Wheels* price each wheel</b>	
7 x 15	\$ 350.00
8 x 16 Silver Center	\$ 350.00
8 x 16 Painted Center	\$ 385.00
<b>BBS Wheels</b>	
7 x 15	\$ 250.00
7 x 16	\$ 265.00
8 x 16	\$ 285.00
<b>Chrome-plated factory alloy wheels</b>	
per set of 4 exchange	\$ 650.00

<b>Interior/Exterior Appointments</b>	
<b>AMG Steering Wheel Type II</b>	
Black	\$ 375.00
Color*	\$ 595.00
<b>Factory Steering Wheel covered in</b>	
Mercedes Leather*	\$ 400.00
<b>Matching Wood Console Compartment</b>	
Burl Wood	\$ 250.00
Zebra Wood	\$ 215.00
European Headlamps	\$ 300.00
<b>Shift Knob</b>	
Burl Wood	\$ 295.00
Zebra Wood	\$ 170.00
Leather*	\$ 195.00
Full Door Burl Wood Kit	\$2,575.00

#### Additional Items Available

Call or write for information about more enhancements like our 5-speed manual gear-boxes, extended range fuel tanks, refrigerators and fold-away seat back tables.

W-126C  
See Page 7.



380SEC, 500SEC, USA Models 1982 to present  
380SEC, 500SEC: European Models

#### Aerodynamic and Appearance Enhancements

<b>Front Air Dam</b>	
For USA models	\$ 375.00
All European	\$ 350.00
Side Skirts all Models	\$ 425.00
Rear Deck Lid Spoiler, Type I	\$ 200.00
Rear Deck Lid Spoiler, Type II	\$ 200.00
<b>Rear Skirt</b>	
All USA models	\$ 475.00
All European models	\$ 400.00
<b>"Wide" Body Kit: Special front air dam &amp; 2 fenders; special side &amp; rear skirts; rear spoiler &amp; quarter panel flares. Requires 9" and 10" rims</b>	
	\$3,500.00
<b>Performance Enhancements</b>	
Tubular Exhaust Headers, V-8	\$1,295.00
Sport Exhaust System, V-8	\$1,295.00
<b>Differentials—Limited Slip or ABS/Limited Slip</b>	
3.06, 3.27 or 3.46 ratio	\$2,250.00

<b>Suspension and Handling Enhancements</b>	
<b>Lowered Suspension Kit: 4 springs and</b>	
AMG gas pressure shocks	\$1,350.00
Self leveling suspension	\$1,700.00
<b>AMG Wheels* price each wheel</b>	
7 x 15	\$ 350.00
8 x 16 Silver Center	\$ 350.00
8 x 16 Painted Center	\$ 385.00
9 x 16 (requires body alterations)	\$ 850.00
10 x 16 (requires body alterations)	\$ 875.00
<b>BBS Wheels</b>	
7 x 15	\$ 250.00
7 x 16	\$ 265.00
8 x 16	\$ 285.00
<b>Chrome-plated factory alloy wheels</b>	
per set of 4 exchange	\$ 650.00

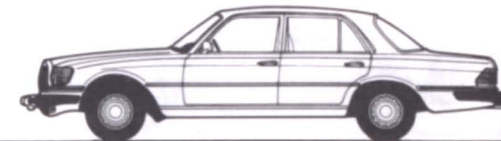
<b>Interior/Exterior Appointments</b>	
<b>AMG Steering Wheel Type II</b>	
Black	\$ 375.00
Color*	\$ 595.00
<b>Factory Steering Wheel covered in</b>	
Mercedes Leather*	\$ 400.00
<b>Matching Wood Console Compartment</b>	
Burl Wood	\$ 250.00
Zebra Wood	\$ 215.00
European Headlamps	\$ 300.00
<b>Shift Knob</b>	
Burl Wood	\$ 295.00
Zebra Wood	\$ 170.00
Leather*	\$ 195.00
Full Door Burl Wood Kit	\$1,450.00

#### AMG Engine Kits

Our thoroughly proven engine kits are designed for installation at any of our approved AMG Distributors or by any factory trained technicians. Write or call for more information about our 276hp 450/500 engine kit or the only EPA accepted 145hp engine kit for the 190E.

AMG Parts Prices by Model  
Effective April 1, 1984.  
Prices subject to change without notice.

W-116  
See Page 7.



280S & SE, 300SD, 450SE & SEL, 450SEL.6.9 USA Models 1973 through 1980  
280S, SE & SEL, 350SE & SEL, 450SE & SEL, & 6.9 European Models

#### Aerodynamic and Appearance Enhancements

<b>Front Air Dam</b>	
Side Skirts all SE models	\$ 400.00
Side Skirts all SEL models	\$ 400.00
Rear Deck Lid Spoiler	\$ 200.00
Rear Skirt	\$ 400.00

<b>Performance Enhancements</b>	
<b>Differentials—Limited Slip or ABS/Limited Slip</b>	
3.06, 3.27 or 3.46 ratio	\$2,250.00

<b>Suspension and Handling Enhancements</b>	
<b>Lowered Suspension Kit: 4 springs and</b>	
AMG gas pressure shocks.	
5 & 6 cyl and 350 V-8	\$1,350.00
Self leveling suspension 450 V-8	\$1,700.00
<b>AMG Wheels* price each wheel</b>	
7 x 15	\$ 350.00
8 x 16 Silver Center	\$ 350.00
8 x 16 Painted Center	\$ 385.00

<b>BBS Wheels</b>	
7 x 15	\$ 250.00
7 x 16	\$ 265.00
8 x 16	\$ 285.00
<b>Chrome-plated factory alloy wheels</b>	
per set of 4 exchange	\$ 650.00

<b>Interior/Exterior Appointments</b>	
<b>AMG Steering Wheel Type II</b>	
Black	\$ 375.00
Color*	\$ 595.00
<b>Factory Steering Wheel covered in</b>	
Mercedes Leather*	\$ 400.00
<b>Matching Wood Console Compartment</b>	
Burl Wood	\$ 250.00
Zebra Wood	\$ 215.00
European Headlamps	\$ 300.00
<b>Shift Knob</b>	
Burl Wood	\$ 295.00
Zebra Wood	\$ 170.00
Leather*	\$ 195.00

\*To order painted road wheels, specify factory exterior color. To order color coordinated interior items such as leather steering wheels, floor mats, or custom sheepskin items, specify factory interior color. Always specify model and year of your motorcar.

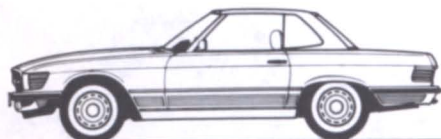
#### Tires and Wheels

We recommend and supply Goodyear Eagle GT or VR (Gatorback) tires for optimum performance. When ordering wheels call us for mounted and balanced prices.

The manufacturer names, numbers, symbols and descriptions are used for reference purposes only and do not imply that any product listed is the product of the manufacturer.



W-107  
See Page 9.



**350SL, 450SL, & SLC USA Models 1972 through 1980, 380SL & SLC 1981 to present 280SL & SLC, 350 SL & SLC, 380SL & SLC, 450SL & SLC (including 450SLC 5.0) 500SL & SLC: European Models**

#### Aerodynamic and Appearance Enhancements

Front Air Dam, all models	\$ 350.00
Side Skirts all SL models	\$ 400.00
Side Skirts all SLC models	\$ 400.00
Rear Deck Lid Spoiler	\$ 200.00
Rear Skirt, USA SL & SLC models	\$ 500.00
European models SL & SLC	\$ 425.00

#### Performance Enhancements

Tubular Exhaust Headers, V-8	\$1,295.00
Sport Exhaust System, V-8	\$1,295.00
Differentials—Limited Slip or ABS/Limited Slip 3.06, 3.27 or 3.46 ratio	\$2,250.00

#### Suspension and Handling Enhancements

Lowered Suspension Kit: 4 springs and AMG gas pressure shocks	\$1,500.00
AMG Wheels* price each wheel	
7 x 15	\$ 350.00
8 x 16 Silver Center	\$ 350.00
8 x 16 Painted Center	\$ 385.00
BBS Wheels	
7 x 15	\$ 250.00
7 x 16	\$ 265.00
8 x 16	\$ 285.00

Chrome-plated factory alloy wheels per set of 4 exchange \$ 650.00

#### Interior/Exterior Appointments

AMG Steering Wheel Type II	
Black	\$ 395.00
Color*	\$ 595.00
Factory Steering Wheel covered in Mercedes Leather*	\$ 400.00
Matching Wood Console Compartment	
Burl Wood	\$ 250.00
Zebra Wood	\$ 215.00
European Headlamps	\$ 300.00
Shift Knob	
Burl Wood	\$ 295.00
Zebra Wood	\$ 170.00
Leather*	\$ 195.00

\*To order painted road wheels, specify factory exterior color. To order color coordinated interior items such as leather steering wheels, floor mats, or custom sheepskin items, specify factory interior color. Always specify model and year of your motorcar.

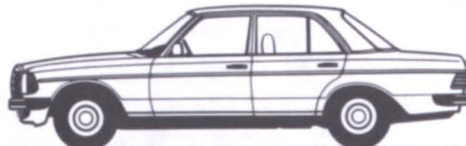
#### Additional Items Available

Call or write for information about more enhancements like our 5-speed manual gear-boxes, extended range fuel tanks, refrigerators and fold-away seat back tables.

#### Tires and Wheels

We recommend and supply Goodyear Eagle GT or VR (Gator-back) tires for optimum performance. When ordering wheels call us for mounted and balanced prices.

W-123 Sedan and Coupe  
See Page 8.



**230, 240D, 280E & CE, 300D, 300CD USA Models 1977 to present 230, 240D, 280E & CE, 300D, DT, CD European Models**

#### Aerodynamic and Appearance Enhancements

Front Air Dam	
Type I: For USA models	\$ 350.00
Type II: European Models with wheel arch extension	\$ 375.00
Type III: For European models, replaces front bumper	\$ 650.00
Side Skirts all Coupe models	\$ 400.00
Side Skirts all Sedan models	\$ 400.00
Rear Deck Lid Spoiler	\$ 200.00
Rear Skirt	\$ 400.00

#### Performance Enhancements

Differentials—Limited Slip or ABS/Limited Slip 3.06, 3.27 or 3.46 ratio	\$2,250.00
---	------------

#### Suspension and Handling Enhancements

Lowered Suspension Kit: 4 springs and AMG gas pressure shocks	\$1,150.00
AMG Wheels* price each wheel	
7 x 15	\$ 350.00
8 x 16 Silver Center	\$ 350.00
8 x 16 Painted Center	\$ 385.00
BBS Wheels	
7 x 15	\$ 250.00
7 x 16	\$ 265.00
8 x 16	\$ 285.00

Chrome-plated factory alloy wheels per set of 4 exchange \$ 650.00

#### Interior/Exterior Appointments

AMG Steering Wheel Type II	
Black	\$ 375.00
Color*	\$ 595.00
Factory Steering Wheel covered in Mercedes Leather*	\$ 400.00
Matching Wood Console Compartment	
Burl Wood	\$ 250.00
Zebra Wood	\$ 215.00
European Headlamps	\$ 300.00
Shift Knob	
Burl Wood	\$ 295.00
Zebra Wood	\$ 170.00
Leather*	\$ 195.00

#### AMG Engine Kits

Our thoroughly proven engine kits are designed for installation at any of our approved AMG Distributors or by any factory trained technicians. Write or call for more information about our 276hp 450/500 engine kit or the only EPA accepted 145hp engine kit for the 190E.

W-123T  
See Page 8.



**300TD, 300TDT USA Models, 1977 to present 280TE: European Model**

#### Aerodynamic and Appearance Enhancements

Front Air Dam	
Type I: All USA models	\$ 350.00
Type II: With wheel arch extension	\$ 375.00
Type III: For all European models with wheel arch extension	\$ 650.00
Side Skirts	\$ 400.00
Rear Spoiler	\$ 225.00
Rear Skirt	\$ 400.00

#### Suspension and Performance Enhancements

Lowered Suspension Kit: 4 springs and AMG gas pressure shocks	\$1,600.00
AMG Wheels* price each wheel	
7 x 15	\$ 350.00
8 x 16 Silver Center	\$ 350.00
8 x 16 Painted Center	\$ 385.00
BBS Wheels	
7 x 15	\$ 250.00
7 x 16	\$ 265.00
8 x 16	\$ 285.00

Chrome-plated factory alloy wheels per set of 4 exchange \$ 650.00

#### Interior/Exterior Appointments

AMG Steering Wheel Type II	
Black	\$ 375.00
Color*	\$ 595.00
Matching Wood Console Compartment	
Burl Wood	\$ 250.00
Zebra Wood	\$ 215.00
European Headlamps	\$ 300.00
Shift Knob	
Burl Wood	\$ 295.00
Zebra Wood	\$ 170.00
Leather*	\$ 195.00

#### Finishing Touches (See pages 15 & 16)

"Blueguard®" Car Covers with AMG Logo	\$ 99.95
AMG Logo with "Lockguard" system	\$ 109.95
Keith Collins Designer Floor Mats with AMG Logo*	
Two piece set	\$ 275.00
Four piece set	\$ 350.00
Keith Collins Mouton Floor Mats*	
Two piece set	\$ 350.00
Four piece set	\$ 550.00
Custom Sheepskin Car Seat Covers per seat*	
All Models	\$ 149.95
All Recaro Seats	\$ 199.95
Custom Sheepskin Headrest Covers per pair*	
All models	\$ 75.95
All Recaro Seats	\$ 75.95
Custom Sheepskin Armrest Covers*, all models	\$ 75.95
AMG Trunk Lid Emblem (available only with purchase of 2 or more AMG exterior pieces)	\$ 50.00
1985 AMG Calendar	\$ 19.95
Full Color Poster	
500SEC	\$ 9.95
190E	\$ 9.95
"World's Finest Motorcars" Catalog	\$ 20.00

#### ORDERING INFORMATION

**ORDER BY PHONE:** We accept Visa, and MasterCard. Credit card holders may order by calling 503-221-7829. Phone lines are open Monday thru Friday from 9 am. to 5 pm.

**ORDER BY MAIL:** Use the Order Form at right. Please be sure to correct any errors on your address label. If paying by credit card but using a different billing address, please include your correct billing address.

Check Payment Method. Fill in Total Amount, Card Number, Expires, Model & Year. Tell us the Quantity, Size, Color, Item Description, Price and Extension for each item ordered.

**COLORS:** For painted road wheels please provide factory exterior color. For interior colors see order form.

**SHIPPING AND HANDLING:** Shipping, handling and insurance are prepaid on orders totaling \$500 or more delivered within the continental United States. For orders less than \$500, add \$15.00. For "World's Finest Motorcars" calendar, or poster orders add \$2.00. All orders are shipped by UPS or truck. Please do not use P.O. Boxes for Delivery Addresses. UPS will not deliver unless a street address is given.

**INSTALLATION:** Our factory trained AMG technicians will install any of the items shown in this catalog. Please call for a quotation. Your car can be picked up and delivered by our own car carrier.

**A REMINDER:** Please be certain to specify sizes and colors desired, where applicable, and ALWAYS include the model and year of your car.

#### DELIVERY INFORMATION

**STOCK ITEMS:** In-stock merchandise will be shipped within two weeks. In case of delays, you will be notified by mail within two weeks.

**SPECIAL ORDER MERCHANDISE:** Please allow 4-6 weeks delivery for all custom or special order items.

**SHIPPING DELAYS:** Please allow three weeks for clearance of personal checks. Your order will then be shipped immediately. If merchandise is temporarily out-of-stock, you will be notified as to when the shipment is expected.

**WE AIM TO PLEASE:** If you are not delighted with the order you receive, please call us immediately. We can only provide a return authorization number within two weeks of your receipt of the order. Returns without an authorization number will not be accepted. All returns are conditional—the merchandise must be in original unused condition, including all hardware, wires, and printed matter. Each item must be returned in its original package.

**DEFECTIVE MERCHANDISE:** All merchandise is guaranteed 90 days against defects in workmanship. As with any returns, you must call for return instructions and authorization number. Some items must be returned directly to the manufacturer. No returns without an authorization number can be accepted.

**SHOWROOM HOURS:** Mon.-Sat. from 9 am to 6 pm. You are welcome to stop by our showroom to see one or more of the AMG models we have on hand. If you know someone who would like to receive our catalog, send us their name and address and we'll see that they get one.

**AMG**

Northwest, Inc.  
2211 N.W. Raleigh Street  
Portland, Oregon 97210



**BILLING ADDRESS:**

NAME \_\_\_\_\_  
ADDRESS \_\_\_\_\_  
CITY \_\_\_\_\_ STATE \_\_\_\_\_ ZIP \_\_\_\_\_  
SIGNATURE \_\_\_\_\_  
(for charges)  
PHONE ( ) \_\_\_\_\_

**SHIPPING ADDRESS** (If different from billing address)  
(street address only)

NAME \_\_\_\_\_  
ADDRESS \_\_\_\_\_  
CITY \_\_\_\_\_ STATE \_\_\_\_\_ ZIP \_\_\_\_\_  
SIGNATURE \_\_\_\_\_  
(for charges)  
PHONE ( ) \_\_\_\_\_



**ORDER  
BY PHONE**

503-221-7829

**PAYMENT  
METHOD:**

- ☐ Visa  
☐ MasterCard  
☐ Personal Check

**PLEASE FILL IN**

CAR MODEL \_\_\_\_\_  
example: 380SEL  
YEAR \_\_\_\_\_

**\*MERCEDES  
INTERIOR COLORS**

Black      Beige  
Blue      Dark Green  
Dark Brown      Henna Red  
Palomino      Grey

ABA NO.

AMOUNT

CARD NUMBER:

EXP. DATE

AUTH. NO.

ITEM NO.

QTY.

SIZE

\*COLOR

ITEM DESCRIPTION

PRICE

EXT.

**DO NOT FILL IN SHADED AREAS**

TOTAL MERCHANDISE

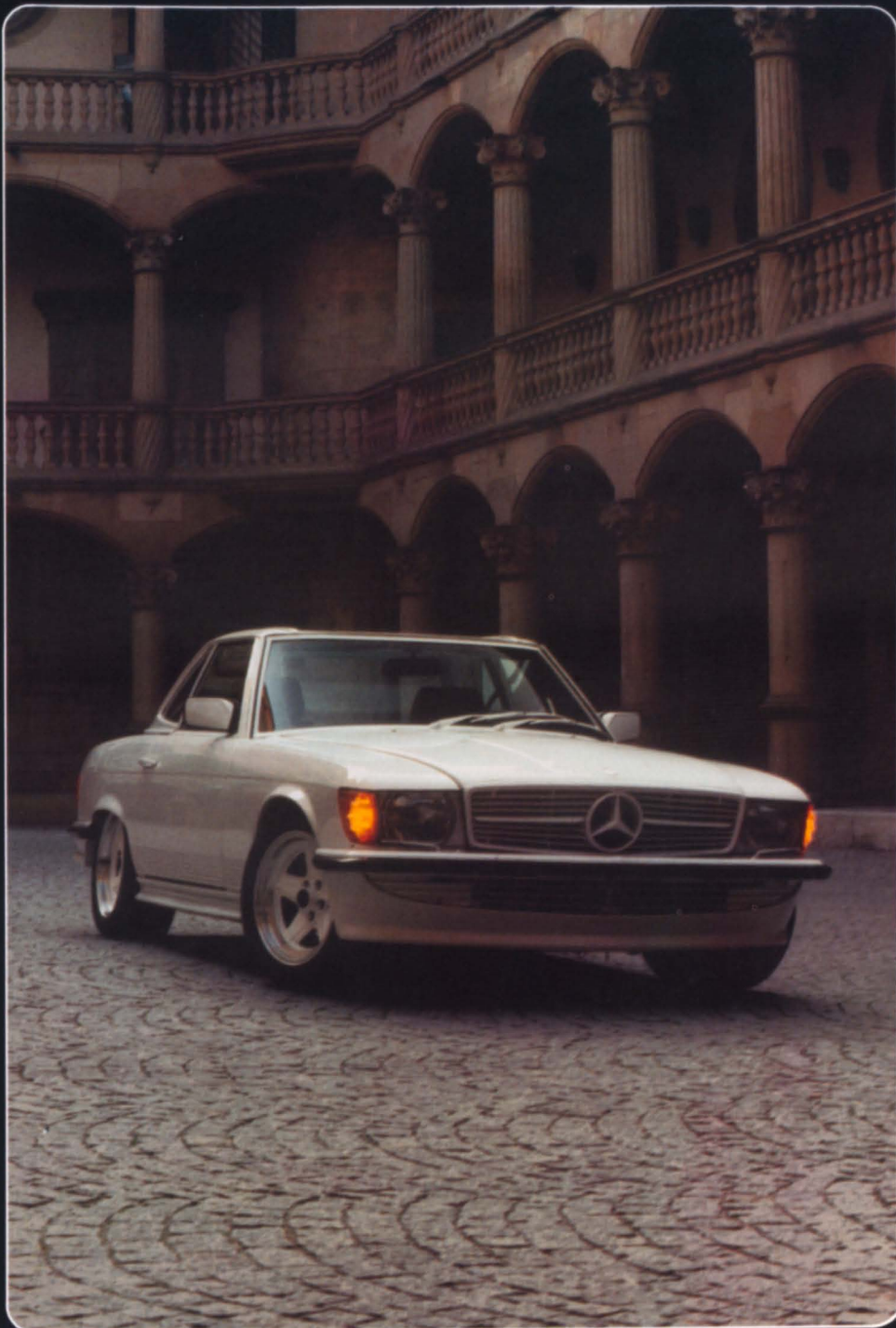
PARTS SHIPPING & HANDLING  
(Orders under \$500.00 add \$15.00.)

SHIPPING AND HANDLING  
Calendar, Poster or "World's Finest  
Motorcars" calendar orders add \$2.00 each.

TOTAL ORDER

\*Provide factory exterior paint color or interior  
color listed in box above.





*AMG interpretations of the SL (W107) body style.*



### ***Suspension and Roadholding Enhancements***

At the same instant that a car meets the wind, it also contacts the road. AMG enhancements transform this contact into an assertive embrace...and propel you into one of the most extraordinary love affairs in motoring.

True coordination, absolute stability, and ultimate precision of reaction are the prime requisites for control. Consider a variety of handling enhancements beginning with our handsome, high-style road wheels.

We feature AMG's famous precision wheels. These sporty wheels can even be custom finished to match your car's exterior. Wheel sizes begin at 6.5 x 16 for the 190E, and include sizes up to 8 x 16 for use with our wide bodied 500SEC. In addition to our own precision-crafted wheels, we also offer famous BBS design wheels, and chrome-plated factory alloys.

Fitted beneath the Mercedes' skin are supple springs, custom wound in West Germany for AMG. With our own gas-pressure shock absorbers from Bilstein or Sach's, Germany's best-known suppliers of Mercedes suspension components, these suspension kits lower your car 1½" to 2". The perfect match of these elements delivers supreme handling and an athletically compliant ride.



AMG alloy road wheels are available in a full range of sizes up to 10" x 16".



190E alloy road wheels.



The AMG suspension kit for the 190E.



The trim 190E takes advantage of its size to leave the most accomplished footprints in the annals of small-car history. It melds excellent balance and directional stability with outstanding skidpad and braking performance, boosting cornering force from a stock 0.70 g to a remarkable 0.81 g, and reducing 70-to-0 mph braking distance from 241 feet to only 178 feet.



The AMG Mercedes 500 SEL is the world's greatest sedan. Nicknamed "Atomic Blueberry" by *Car and Driver*, it is unchallenged as the most awesome traveling companion — a machine offering limousine accommodations, sports car handling, and a top speed in excess of 160 mph.



## Performance enhancements

AMG Engine Kits are engineered with many parameters in mind; chief among them are durability and tractability, rigidly maintained to match — even surpass—the prodigious power outputs of our tuned engines.

In addition to providing fully installed engines in factory-built AMG cars, we provide a complete range of custom, fully-tested Engine Kits for installation at any of our approved centers, each staffed by technicians factory-trained in Germany. We even offer a kit for the 190E that meets EPA emissions requirements and boosts horsepower from 113 to 145. AMG Engine Kits provide ease of installation, maximum output, and long-term pleasure. Each kit is fully warranted. . . as you would expect.

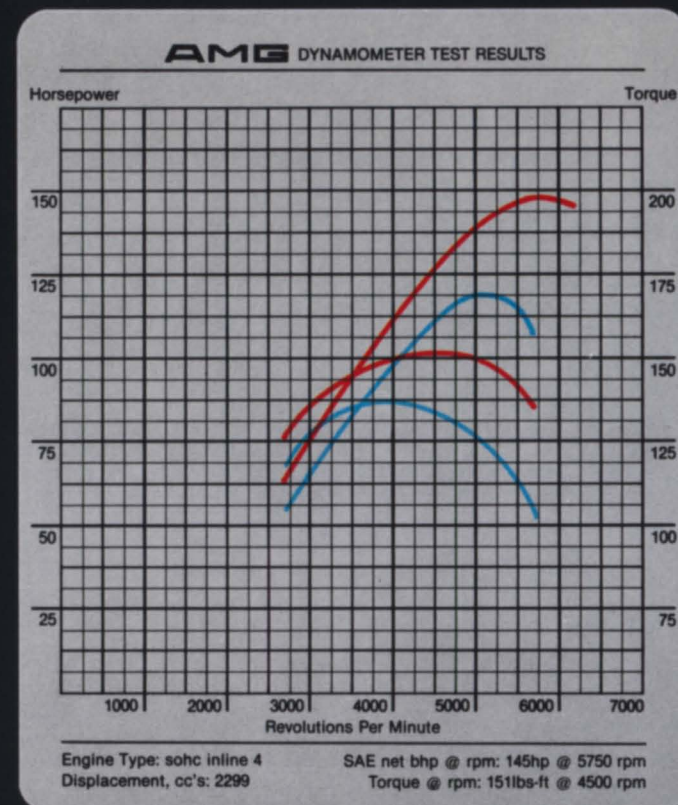
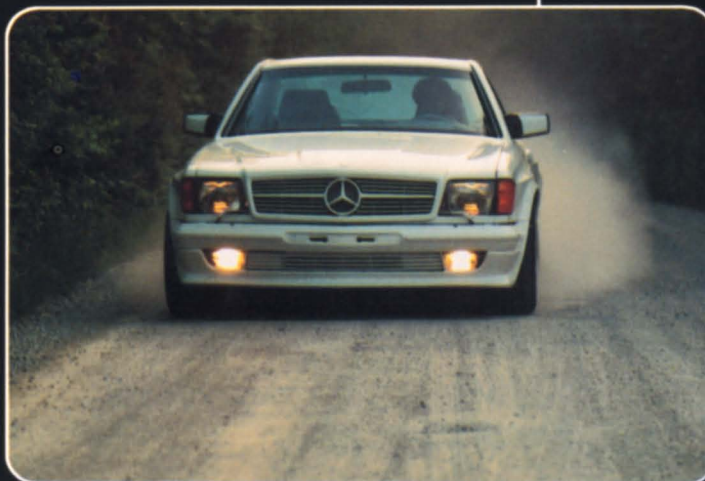
It has been years since the American Mercedes owner has been able to enjoy the once outstanding performance capabilities of cars like the muscular 6.9 liter SEL. Government Corporate Average Fuel Economy, EPA and DOT regulations have virtually strangled the ability of a Mercedes to accelerate to 60 miles per hour in anything less than 10 seconds.

But now, AMG Engine Kits breathe new life into all late model gasoline powered Mercedes motorcars, including the 190E. The measure of this new life was demonstrated in a recent road test of an AMG-modified SEL by the editors of *Car and Driver* magazine. The results read more like those expected from premium performance sports cars. 0 - 60 times were slashed to 7.4 seconds. The quarter mile was clocked in 15.5 seconds at 93 miles per hour. 0 to 100 miles per hour was achieved in a mere 18.3 seconds. These are the kind of power reserves that add an extra margin of safety to two lane highway passing maneuvers. And, remarkably, fuel economy is just over 20 miles per gallon at sustained maximum legal speed.

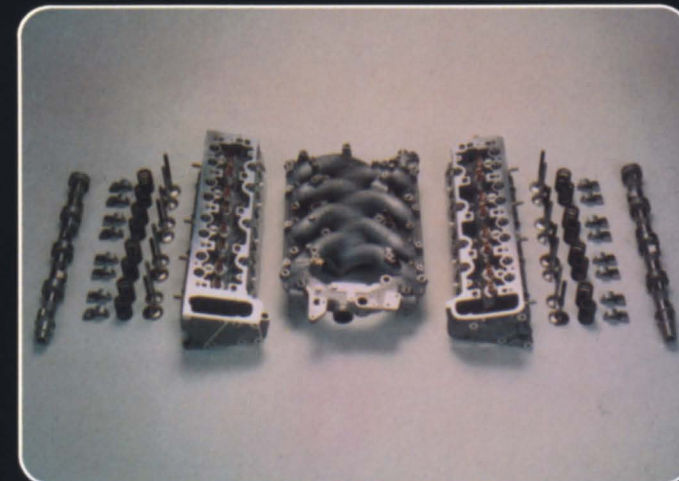
Our engines speak strongly, yet their manners are refined. AMG reintroduces magnificent performance to the international motoring scene.

Horsepower increases range from 25 to 30 percent with our kits. At the uppermost end, they include:

- fully-assembled and polished big-valve heads,
- polished valves with special springs and keepers
- high-output AMG camshafts to take maximum advantage of improved breathing afforded by better head flow
- modified/enlarged fuel injection manifolds for optimum fuel-delivery characteristics
- specially calibrated computer controls for proper fuel delivery at critical times
- all gaskets, seals and sparkplugs.



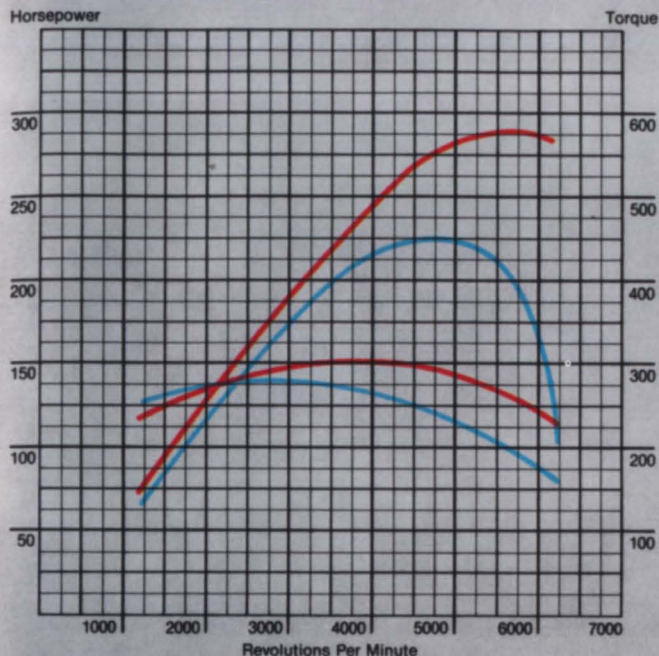
EPA approved 145hp 190E Engine Kit power and torque (red lines) compared to the stock engine (blue lines).



The major components in an AMG V-8 engine kit.



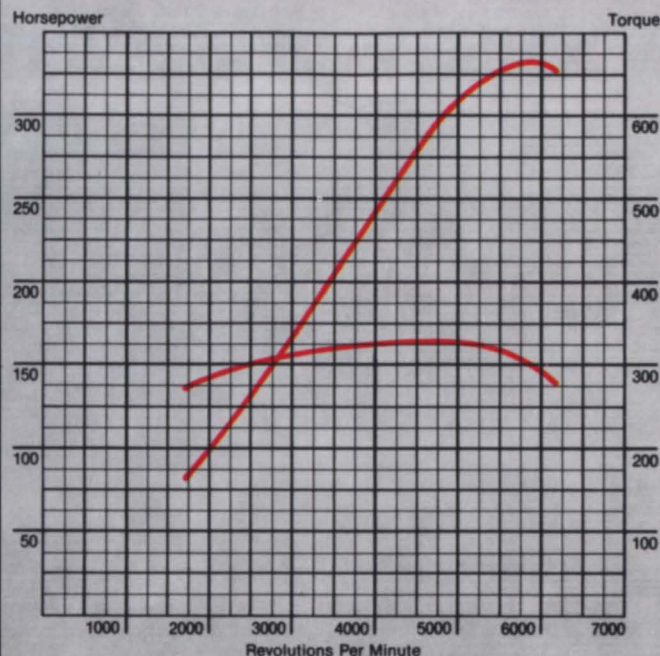
# AMG DYNAMOMETER TEST RESULTS



Engine Type: sohc V-8  
Displacement, cc's: 4973

Horsepower and torque of the AMG-modified 5.0 liter V-8 (red lines) compared to the stock 5.0 liter power curves (blue lines).

# AMG DYNAMOMETER TEST RESULTS



Engine Type: dohc, 4v-V-8  
Displacement, cc's: 4973

AMG cylinder heads with dual overhead camshafts and four valves per cylinder help this 5.0 liter motor develop over 337hp.



Limited slip differentials come in final drive ratios of 3.06, 3.27 or 3.46 to replace stock ratios of 2.24 and 2.47 in the newer models.

Two steps transmit the power—the gearbox and the differential. For V-8 engine Mercedes, AMG offers two five-speed Getrag gearboxes—a close-ratio sport model for maximum response or a long-legged overdrive for maximum economy.

AMG also recommends a differential tailored for performance via 3.06, 3.27 or 3.46 axle ratios. This is a complete assembly for bolt-in installation and does not require any adjustments. It replaces the stock ratio of 2.24/2.47 in all 1982 and newer Mercedes.

Three years of development on our dynamometer have produced the AMG Sport Exhaust System. It bolts onto the stock manifolds, frees 10-15 additional horsepower, and the exhaust tone gains quiet distinction. Chrome tips are single for the 190E and dual for V-8 engines. The optional catalytic converter makes this system legal for highway use in all states. In addition, AMG free-flow tubular exhaust headers (manufactured in Austria and plated with nickel) have now been perfected for maximum power.



Sport Exhaust System for the 190E.



AMG Sport Exhaust System for the V-8 powered models.



### *Interior comfort and convenience enhancements*

If it is to live up to your expectations of luxury, even the most exhilarating automobile must be comfortable and receptive to your needs during long hours of travel.

So in addition to its well-known high performance engineering, AMG surrounds you with ultimate comfort and luxury in the cabin. For your passengers, a specially-installed television, including video cassette player and a cabinet of fine Burl wood. Finally, for complete refreshment on the road, AMG can outfit your Mercedes with a special refrigerator-freezer unit. We spare you nothing.

Every Mercedes steering wheel translates road conditions into fine-tuned tactile signals. AMG enhances this sensory experience with our custom leather steering wheels. Choose our Type II wheel, embossed with the AMG logo, and covered in your choice of interior leather upholstery colors. Matching leather covered gear shift knobs are also available to compliment your fine leather interior. Handsome shift knobs crafted of exquisite Burl or Zebra wood are also available.

Full door trim wood kits, finished to the highest Mercedes standards in beautiful Burl Walnut, are available to highlight the larger late model sedans and coupes. Handsome Zebra wood kits are also available to enhance your USA model 190E. Further wood enhancements are available with our matching console compartments, designed for installation between front seats.



*An SEL with matched AMG Type II leather steering wheel, full burl wood kit, television console and rear seat mounted refrigerator/freezer unit.*



*Shift knobs in burl or zebra wood, or leather.*



*The AMG Type II leather covered steering wheel is available in colors to match all factory interiors.*



*An AMG zebra wood kit in the 190E.*





*Hand-tailored sheepskin seat coverings.*

For the ultimate in motoring comfort, we suggest our hand-tailored sheepskin seat covers. Cool in summer, warm in winter, these custom-tailored 1" plush covers feature one piece construction on all major seat portions for greater strength and durability. Contoured to assure a glove-snug fit, these select skins are carefully matched and finished with coordinated binding and straps. To compliment your custom seat covers, we also offer matching armrest covers and headrest covers. Like all our sheepskin seat covers, these accessories also feature a lifetime warranty on workmanship.

We are especially pleased to offer 100% cotton "Blueguard®" car covers bearing the AMG logo. If you've been using a "universal" sized cover, or a synthetic-blend cover, you already know the worst. You need protection devised especially for your Mercedes and this is it! Only 100% soft, breathable cotton can allow air circulation inside the cover, preventing trapped moisture from harming your finish. Protect your vehicle's exterior from its worst natural enemies . . . sun, tree sap, animal deposits, and chemical fallout. Safeguard your interior from discoloring and cracking. "Blueguard®" covers can be washed and dried at home. They carry a lifetime guarantee against harming your car's finish, as well as a two-year prorated guarantee on workmanship and fabric.

Only floor mats by renowned carpet designer Keith Collins could be deemed suitable for motorcars of such extraordinary distinction. These limited edition floor coverings are handcrafted of the finest woven yarns available. Each piece is carefully hand sculpted with the AMG logo to provide an elegant three dimensional touch. These lush but durable jute-backed mats are truly works of art — offering the beauty and quality that are synonymous with AMG. These designer floor mats are available to match or contrast factory interior colors. Luxurious thick-piled mouton mats are also available.

Of special interest will be these fine die-cast metal AMG logo emblems. Available only with the purchase of two or more AMG outside modification items, they fit on the left side, in place of your model emblem, or they can be installed on the right side of your trunk. Select original chrome, or painted to match your motorcar's finish.



*100% cotton "Blueguard®" car covers for any model.*



*Keith Collins Designer Floor Mats also come in luxurious mouton shown at right.*



*The AMG trunk lid emblem.*





We are proud to introduce "Calendar Collection/85", our first AMG calendar. This 13½" x 16", spiral bound calendar offers a different, frameable full color AMG for each month. Renowned automotive photography specialists have provided their best work on these stunning motorcars, including our 190E Wide-Body and 500SEC, SL, and SEL. For year 'round enjoyment, just \$19.95, plus \$2.00 shipping and handling.

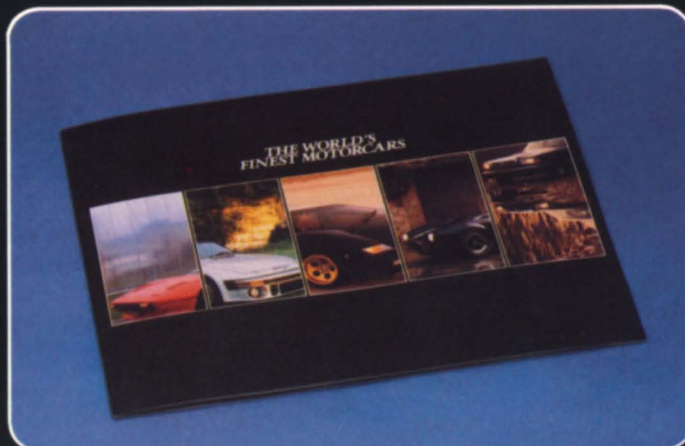


We are pleased to make available for the first time a series of fine limited edition posters. Printed in full color on heavy stock, these giant 19½" x 27" posters are mailed in special tubes to protect them from the rigors of travel. "AutoWeek" calls our White AMG 500SEC Wide-Body "White Thunder." Now you can own a poster of this stunning 310 hp machine for your continued enjoyment.

Or select our spellbinding Red 190 Wide-body, beautifully photographed at speed. Both handsome posters are suitable for framing. Your choice, \$9.95, plus \$2.00 shipping and handling.

# AMG

NORTHWEST, INC.  
2211 N.W. Raleigh Street  
Portland, Oregon 97210  
ORDER BY PHONE  
503-221-7829  
Visa, MasterCard accepted



Our 36 page "World's Finest Motorcars" collection is of special interest to auto enthusiasts everywhere. This award-winning full color catalog is a true photographic masterpiece. Stunning portraits, taken by renowned automotive photographers, feature state-of-the-art luxury/performance motorcars, many in magnificent Old-World surroundings. This "Dream Book" collection includes photos, specifications, and performance figures for Porsche, AC Cobra, Rolls Royce, Lamborghini Countach, Ferrari, BMW, and more . . . including, of course, our own spellbinding AMG 190E, 500SEC, SEL and SL. Just \$20.00, plus \$2.00 shipping and handling.