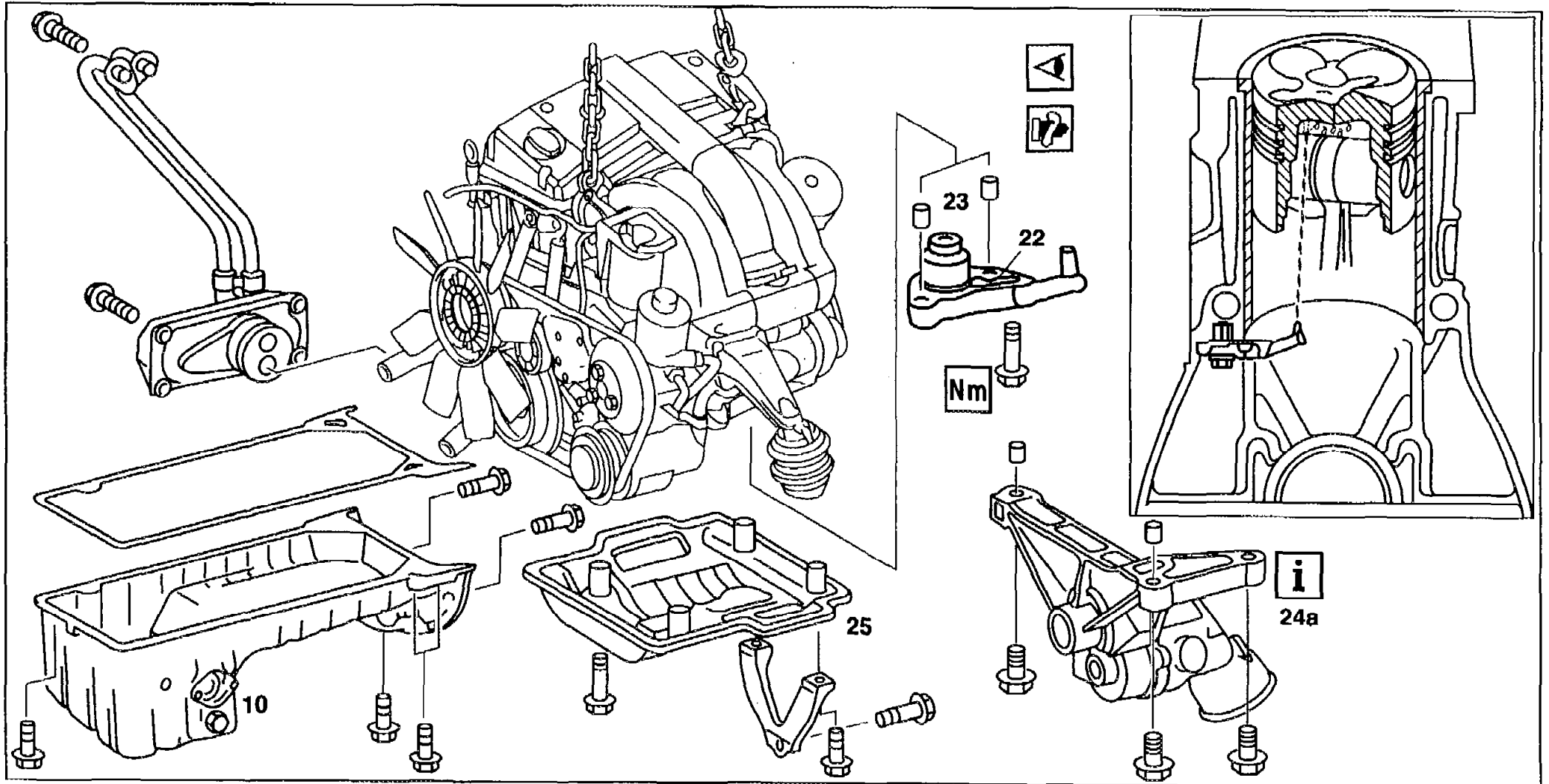


L1	AR18.00-P-4000HA	Removing, installing oil spray nozzles (pistons)	2.4.93
----	------------------	--	--------

ENGINE 602.982, 604, 605, 606 / (except, 606.964)

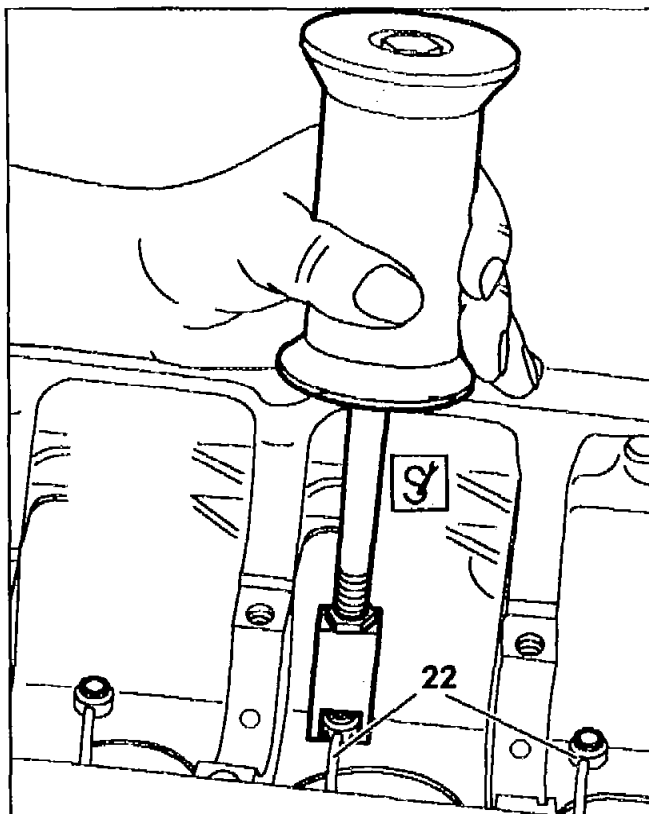


P18.00-0203-09

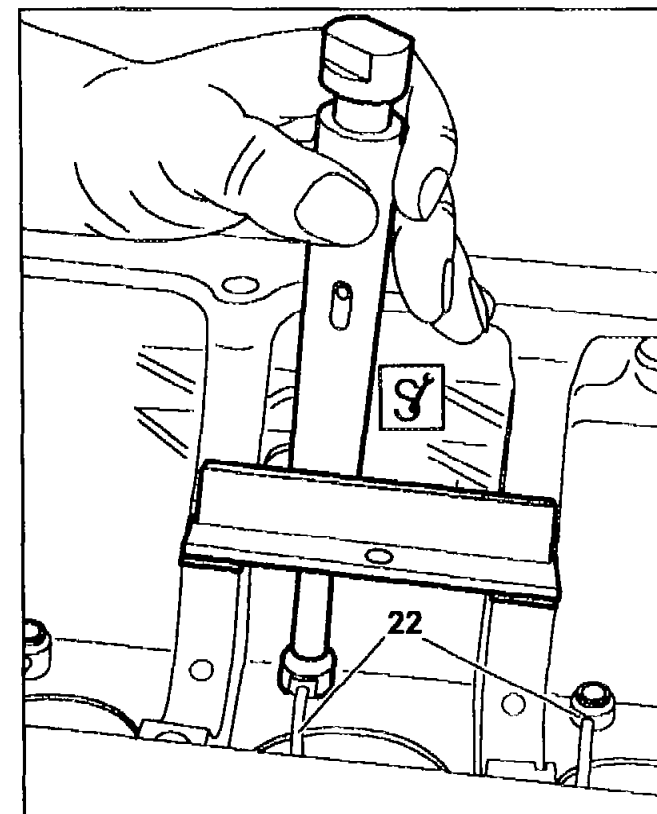
Illustration shows oil spray nozzles 1st version



Oil spray nozzles 2nd version engine 604,  
605, 606  
Engine 602.982



P18.00-0283-02



P18.00-0282-02

### Modification notes

7.5.96	Oil spray nozzles for cooling piston crown modified, bolted oil spray nozzle is replaced by interference-fit oil spray nozzle	see operation 6.1	AR18.00-4000HA
--------	---	-------------------	----------------



Removal, installation

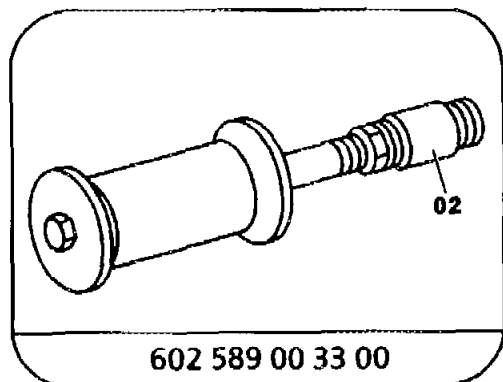
1	Remove oil sump (10)	<p>Oil spray nozzles 2nd version            Engine 604, 605 in model 202            Engine 605, 606 in model 124</p> <p>Engine 606.961 in model 140            Engine 605, 606 in model 210</p> <p>Engine 604 in model 210</p>	<p>AR01.45-P-7500HA</p> <p>AR01.45-P-7500C</p> <p>AR01.45-P-7500D</p>
2	Remove oil pump (24)		<p>AR18.10-P-6020HA</p> <p><b>L2</b></p>
3	Remove oil deflector plate (25)	Engine 605, 606	
4.1	Remove oil spray nozzles (22)	<p>Oil spray nozzles 1st version</p> <p><b>i</b> Rotate engine at crankshaft so that the oil spray nozzle is accessible.</p> <p><b>!</b> Do not twist oil spray nozzle and do not grasp at neck of nozzle.</p> <p>Cover over oil feed drillings.</p> <p><b>i</b> <b>Installation:</b> position oil spray nozzle vertical to contact surface in crankcase and press on.</p> <p><b>!</b> Pay attention to dowel sleeves (23).</p> <p><b>Nm</b></p>	<p>BA18.00-P-1001-01A</p>
5.1	Remove crankshaft	<p>Oil spray nozzles 2nd version            Engine 604, 605, 606</p>	AR03.20-P-4351B
		<p>Oil spray nozzles 2nd version            Engine 602.982</p>	AR03.20-D-4351A



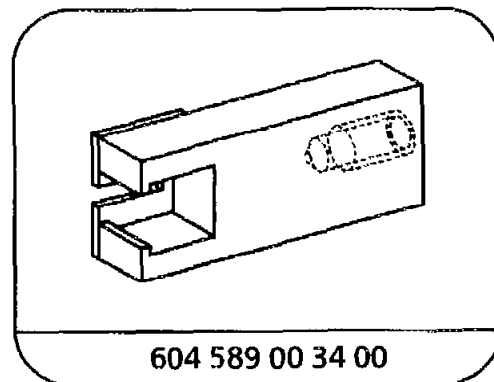
BT	Oil spray nozzles for cooling piston crown modified	Oil spray nozzles 2nd version	BT18.00-P-0001-01A <b>L17</b>
6.1	Remove oil spray nozzles (22)	<p> Use impact extractor and claw to pull out oil spray nozzle (22) 2nd version; cover over oil feed drillings.</p> <p> Impact extractor</p> <p> Extraction claw</p> <p> <b>Installation:</b> Position new oil spray nozzle (22) vertical to the contact surface of the crankcase and knock in with insertion drift. Use an appropriate slugging head. The installation depth is fixed by the slugging head.</p> <p> Insertion drift</p>	<p>602 589 00 33 00</p> <p>604 589 00 34 00</p> <p>604 589 00 15 00</p>
	<b>Inspecting, cleaning</b>		
7	Inspect oil galleries, clean	Use compressed air to blow through oil galleries in direction of flow of oil	
8	Install in the reverse order		

**Nm** Engine lubrication, engine oil cooling, general

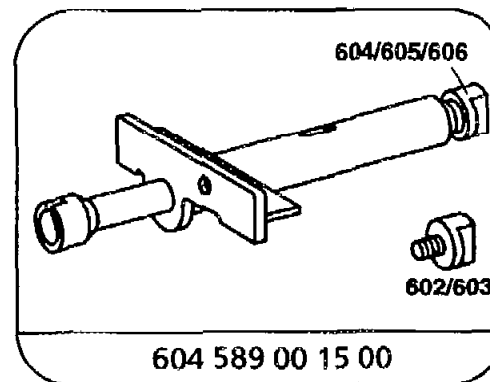
Number	Designation	Engine 604, 605, 606
BA18.00-P-1001-01A	Bolt of oil spray nozzle to crankcase	Nm 10



Impact extractor



Extraction claw



Insertion drift