

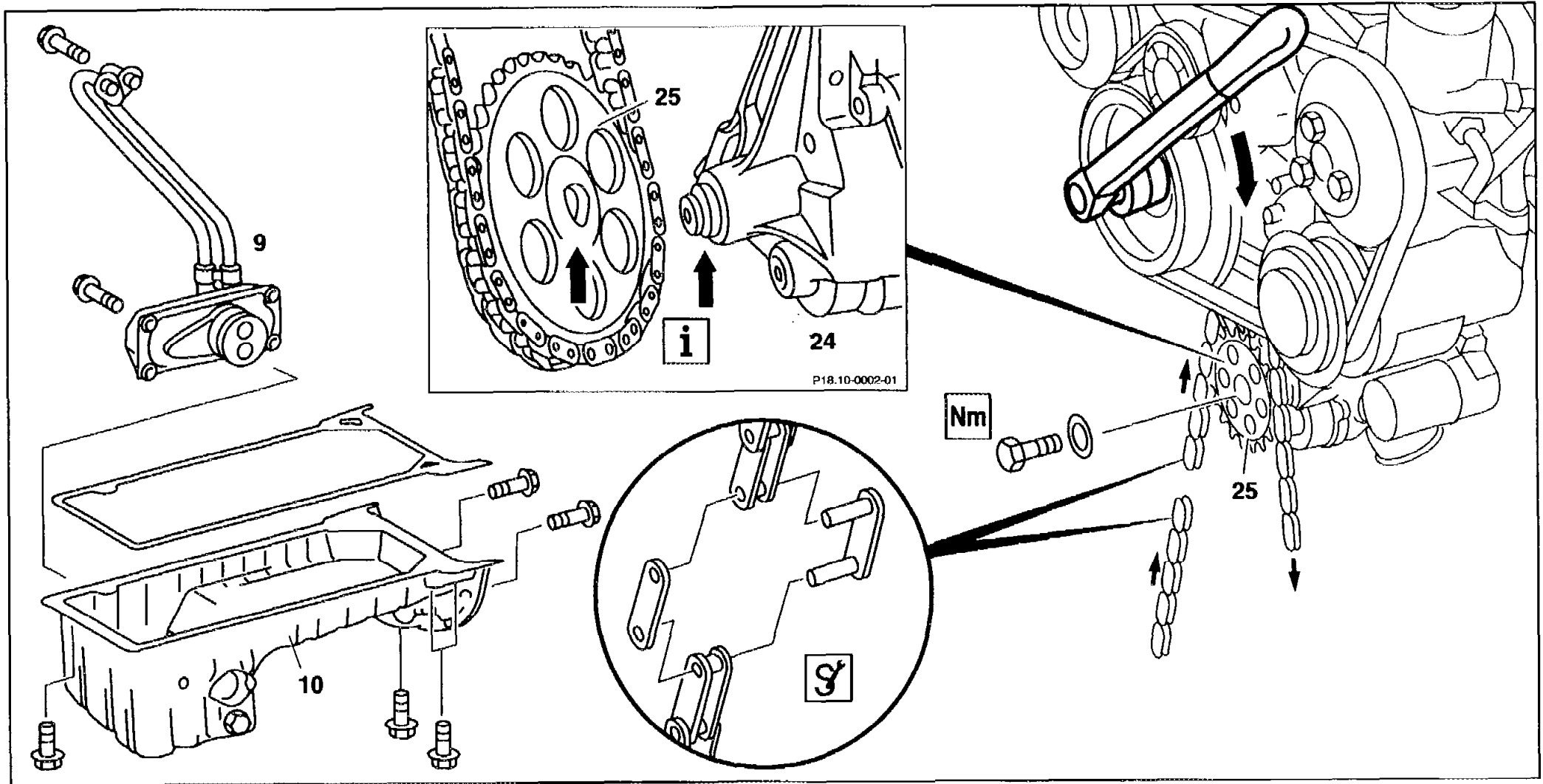
A2

AR18.10-P-2140HA

### Replacing oil pump chain

27.7.94



**ENGINE 111, 602.982 /983, 604, 605, 606**



Shown on engine 604

### Modification notes

6.5.96	Special tool modified and added Procedure modified	Step 2	AR18.10-2140-01HA
--------	---	--------	-------------------

 	Removing, installing		
1.1	Drain coolant	Engine 111	AR20.00-P-1142HG
		Engine 601, 602 except 602.983 , 603, 604, 605, 606,	AR20.00-P-1142HW <b>D6</b>
		Engine 602.983 in model 461 Engine 606.964 in model 463	AR20.00-P-1142GG AR20.00-P-1142GG
2	Drain engine oil		
3.1	Remove oil-water heat exchanger (9) at oil pan	Model 124 Model 202 with engine 604, 605 up to 06/94	AR18.30-P-3480HA <b>M3</b>
4	Remove oil pan (10)	Engine 111.940 /960 in model 124 Engine 111.920/921/941/945 /961/974 in model 202 Engine 111.946 in model 170 Engine 111.945 in model 208  Engine 111.977 in model 163  Engine 111 in model 210	AR01.45-P-7500A      AR01.45-P-7500AG  AR01.45-P-7500B

		Engines 111.943/973 in model 170 and 111.944/975 in model 202 Engine 111.944/975 in model 208  Engine 604, 605 in model 202, engine 605, 606 in model 124  Engine 602.982 in model 210 Engine 602.983 in model 461 Engine 606.964 in model 463 Engine 605, 606 in model 210 Engine 606.961 in model 140 Engine 604 in model 210	AR01.45-P-7500E  AR01.45-P-7500HA  AR01.45-P-7500HW AR01.45-P-7500GG AR01.45-P-7500GG AR01.45-P-7500C  AR01.45-P-7500D
5	Remove oil pump	Engine 111  Engine 604 - 606	AR18.10-P-6020HG  AR18.10-P-6020HA <b>L2</b>
6	Separate oil pump chain	<input checked="" type="checkbox"/> Case <input checked="" type="checkbox"/> Thrust spindle <input checked="" type="checkbox"/> Chain separating tool <input checked="" type="checkbox"/> Thrust pins	AR18.10-P-2140-01HA <b>M15</b>  602 589 00 98 00 602 589 05 63 00 602 589 02 33 00 602 589 05 63 01

7	Rivet oil pump chain	<p>ⓘ When replacing the oil pump chain, also replace the oil pump gear (25) or, in the case of the 2nd version of the oil pump, replace the oil pump.</p> <p>☑ Riveting tool</p> <p>☑ Assembly inserts</p>	<p>AR18.10-P-2140-02HA <b>O15</b></p> <p>602 589 00 39 00</p> <p>103 589 01 63 00</p>
8	Remove oil pump gear	<p>ⓘ <b>Installing 1st version of the oil pump:</b> Install oil pump gear (25) with timing chain fitted on and curved face (arrows) toward oil pump (24).</p> <p>Nm Engine 111, 604, 605, 606</p>	BA18.10-P-1001-01A
		Nm Engine 602.982/983	BA18.10-N-1001-01A
9	Install in the reverse order		

**Nm** Oil pump

Number	Designation	Engine 111	Engine 604, 605, 606
BA18.10-P-1001-01A	Chain sprocket to oil pump	Nm 32	32

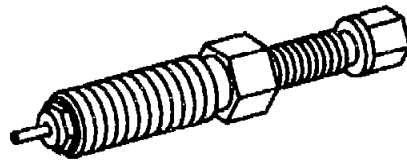
**Nm** Oil pump

Number	Designation	Engine
		602.980/ 982/983/ 984/ 985
BA18.10-N-1001-01A	Chain sprocket to oil pump	Nm 32



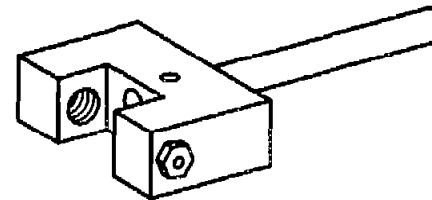
602 589 00 98 00

Case



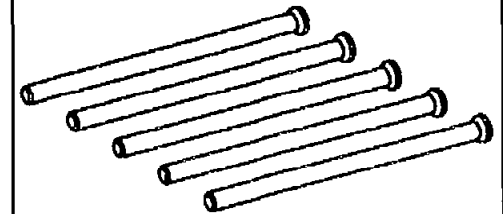
602 589 05 63 00

Thrust spindle



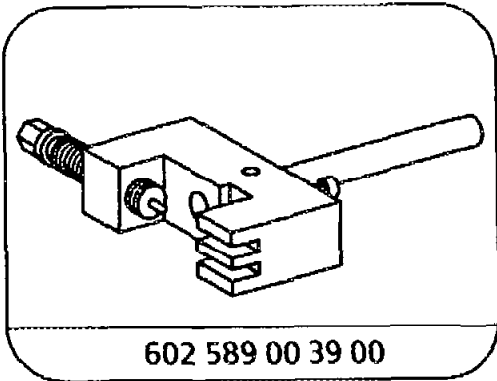
602 589 02 33 00

Chain separating tool



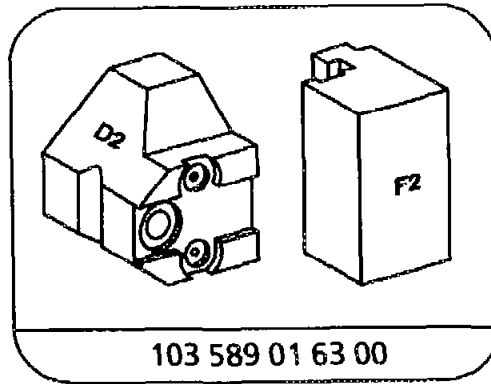
602 589 05 63 01

Thrust pins



602 589 00 39 00

Riveting tool



103 589 01 63 00

Assembly inserts