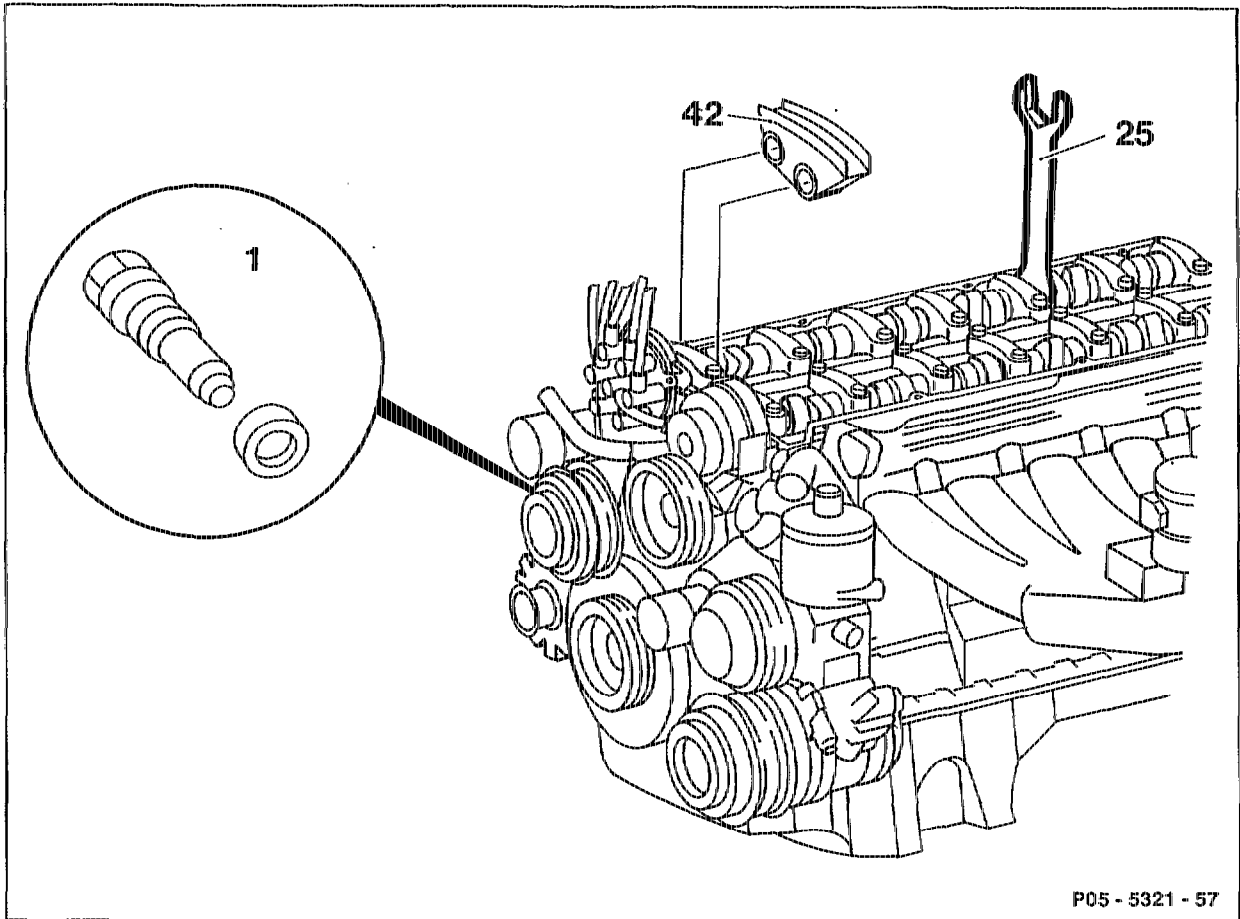


05-3400 Removing and installing guide rail in cylinder head

Preceding work:
Cylinder head cover removed (01-0500).

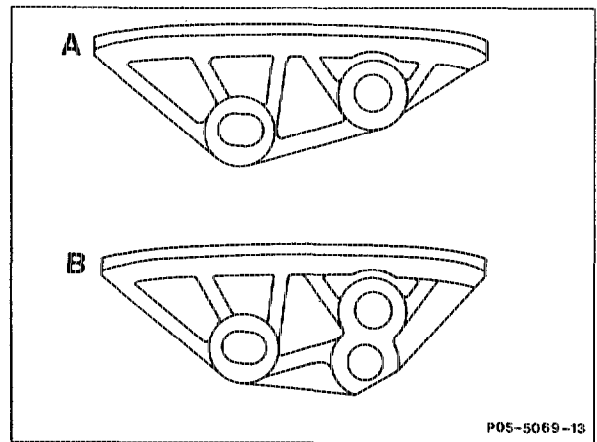


P05 - 5321 - 57

- | | |
|--------------------------------------|---|
| Chain tensioner (1) | remove (05-3100). |
| Exhaust camshaft | rotate with wrench (25) 119 589 00 01 00 (WAF 27) or 104 589 01 01 00 (WAF 29) in direction of rotation of camshaft, slacken timing chain at guide rail (42). |
| | ⚠ If the curved guide rail (42) is taken out of its mounting, the thrust pin in the chain tensioner is moved in the pressure direction by one detent. The chain tensioner must then be removed to avoid the timing chain being over-tensioned. |
| Guide rail (42) at bearing pin | pull off, fit on. |
| Exhaust camshaft | turn back with wrench (25) in opposite direction of rotation of camshaft. |
| Chain tensioner (1) | install (05-3100). |

i

Guide rail with three bearing points replaces
guide rail with two bearing points.
Standardization with engines 104.942/992.



- A 1st version
- B 2nd version

Production breakpoint: June 1991

Model	Engine	Engine end no. manual transmission	Engine end no. automatic transmission
124.031 124.051 124.091	104.980	006321	028147
129.061	104.981	001311	011953
140.032/033	104.990	000096	005054

Special tools

