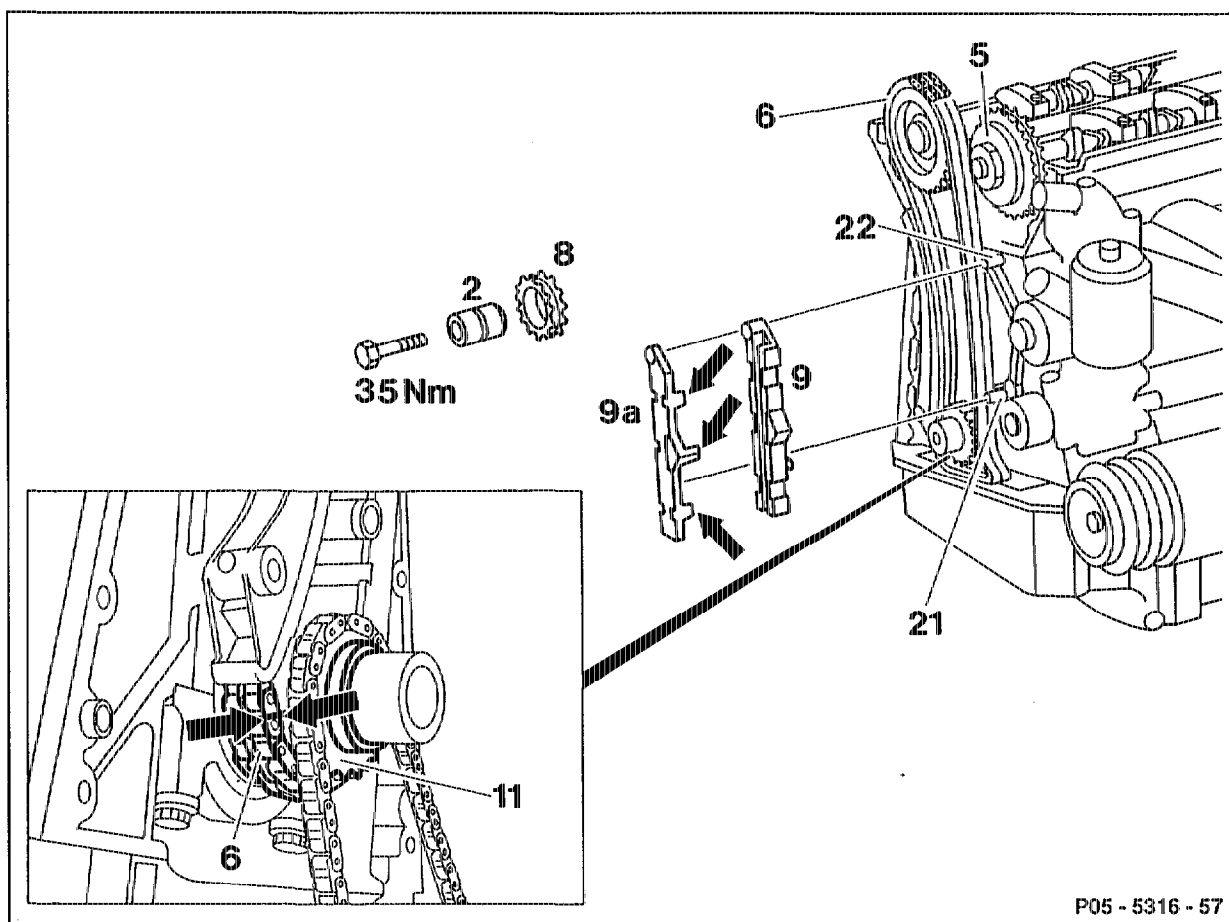


05-3350 Removing and installing guide rail in crankcase

Preceding work:
Timing case cover removed (01-2100).

Engine 104.98



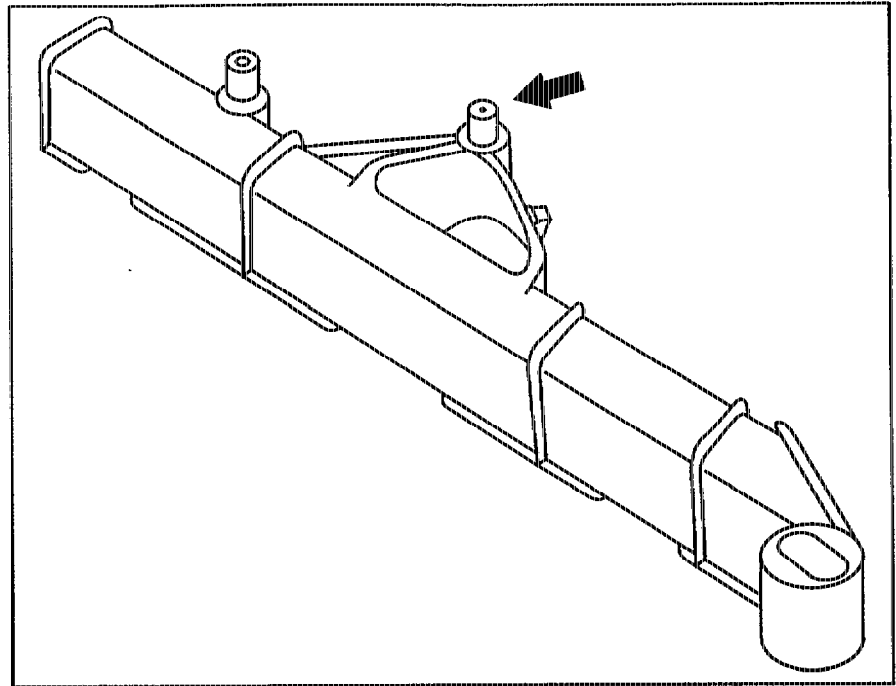
P05 - 5316 - 57

- | | |
|--|---|
| Crankshaft sprocket (11) | mark relative to timing chain (6) with coloured marking (arrows). |
| Guide sprocket (8) | remove, install (05-4400). |
| Timing chain (6) | lift off at inlet camshaft sprocket (5), fit on. Pay attention to coloured marking. |
| Retaining lugs (arrows) guide rail outer part (9a) . | unclip, remove, install. |
| Guide rail inner part (9) on guide rail pins (21) and (22) | pull off, install. Pay attention to coloured marking (arrows) on crankshaft sprocket (11); check basic setting of camshafts if necessary (05-2230). |

Note

The guide rail
104 052 02 16
(2nd version) with
mounting pin and oil
drilling (arrow) should be
used on crankcases with
mounting drilling.

The guide rail
104 052 06 16
(1st version) without
mounting (arrow) must
only be used on
crankcases without a
mounting hole at this
point.



P05.10-0250-35