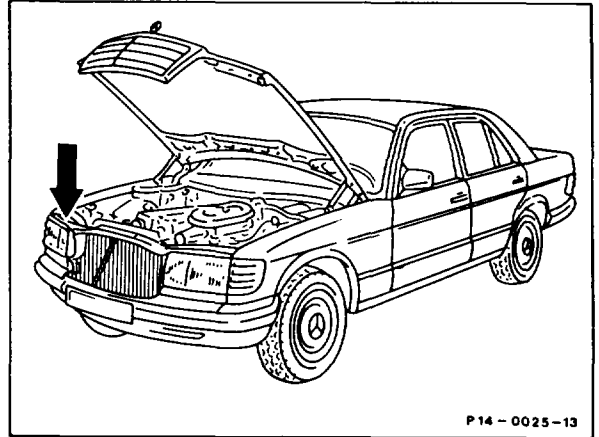


14-0001 Distinguishing features of vehicles with emissions control system

For identifying the vehicles, an information plate (arrow) listing the principal engine setting data, is affixed to the cross member.

AUS as of 1986
CH S as of 1986
 Standard/KAT/RÜF as of 1985



P 14 - 0025 - 13

Daimler-Benz AG, Stuttgart-Untertuerkheim. Motoreinstelldaten:									
Mercedes-Benz Modell		Fahrzeugtypen			Motorfamilie				
LeerlaufEinstellung (ohne eingelegten Gang, ohne eingeschaltete Klimaanlage):		Leerlaufdrehzahl:	min ⁻¹	CO	Vol. %				
HC	ppm	Zündzeitpunkt	vor OT bei	min ⁻¹	Ventilspiel, kalt (°C): Einlaß	mm, Auslaß	mm		
		warm (°C): Einlaß			mm, Auslaß	mm			
Daimler-Benz AG, Stuttgart-Untertuerkheim. Réglage moteur:									
Mercedes-Benz modèle		Vehicules type:			Famille de moteurs				
Reglages ralenti: (BV et climatiseur desaccouplés, Régime ralenti)				min ⁻¹	CO	Vol. %	HC	ppm	
Reglage allumage:	avance a	min ⁻¹	Jeu, soupapes, froid (°C): admission		mm, echapp	mm			
	chaud (°C): admission		mm, echapp	mm					

201 584 09 21

P 14 - 0024 - 53

Example: CH

Identification of information plates

AUS silver
CH green
CH KAT light green
S blue
S KAT light blue
 Standard/KAT/RÜF/without KAT white

ⓐ as of 1986

On these vehicles an information plate for the emissions control system is affixed in Japan in the engine compartment in Japanese. This contains the principal engine setting data.

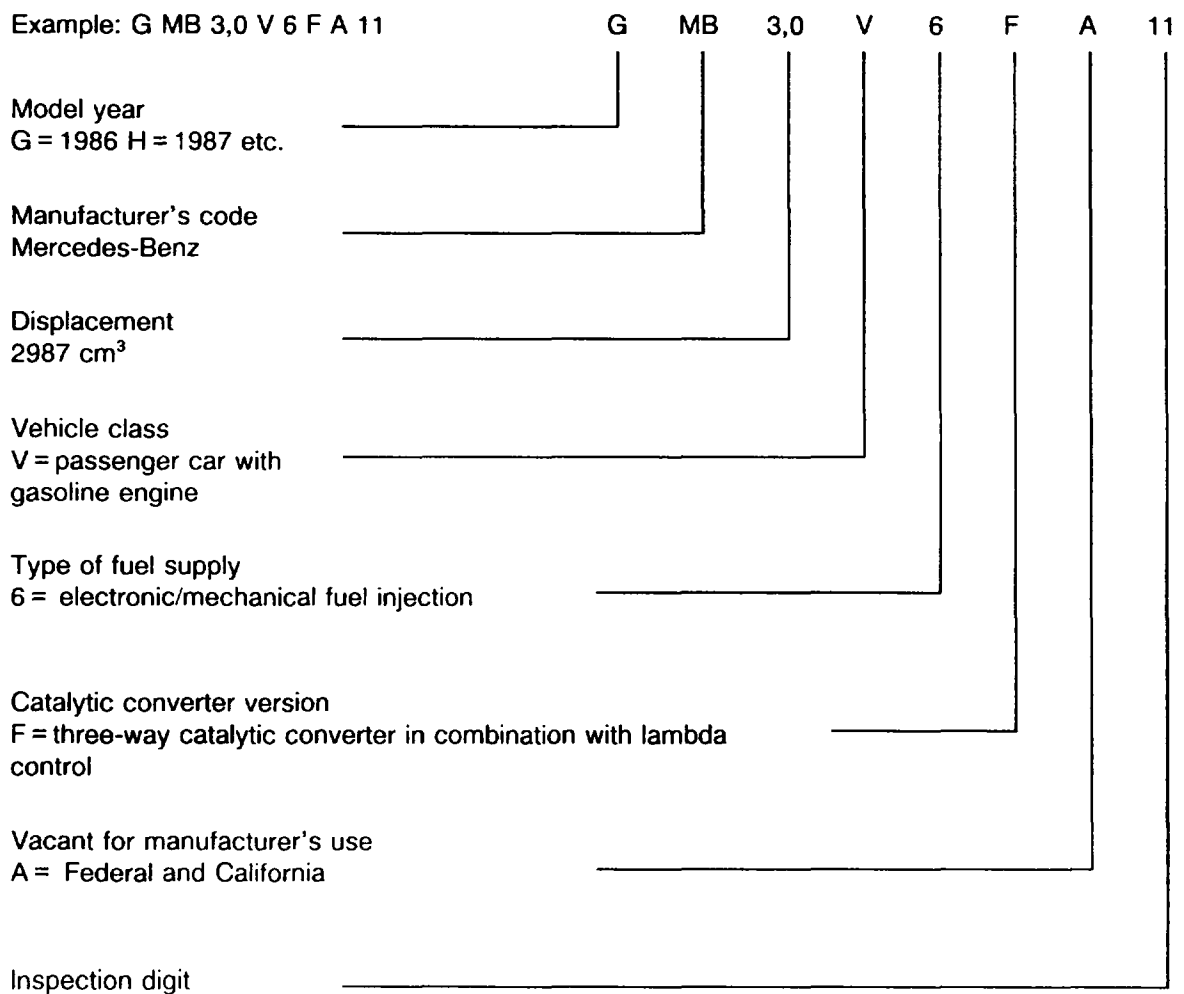
Ⓢ as of 1986

Information plate for emissions control system on cross member in front of radiator.

The engine recognition data as well as the principal engine setting data are contained on this plate.

The engine recognition data are encoded in a 10-position code.

Example: G MB 3,0 V 6 F A 11



Tourist version

Vehicles in tourist version are equipped as of approx. 05/88 by the manufacturer **with** catalytic converters.

At the customer's request, the vehicle can also be supplied **without** catalytic converters.

Colour code: ● background colour: red
● lettering: silver

When the car is introduced into the USA, the catalytic converters must be installed.

Conversion measures see 14-0490.

