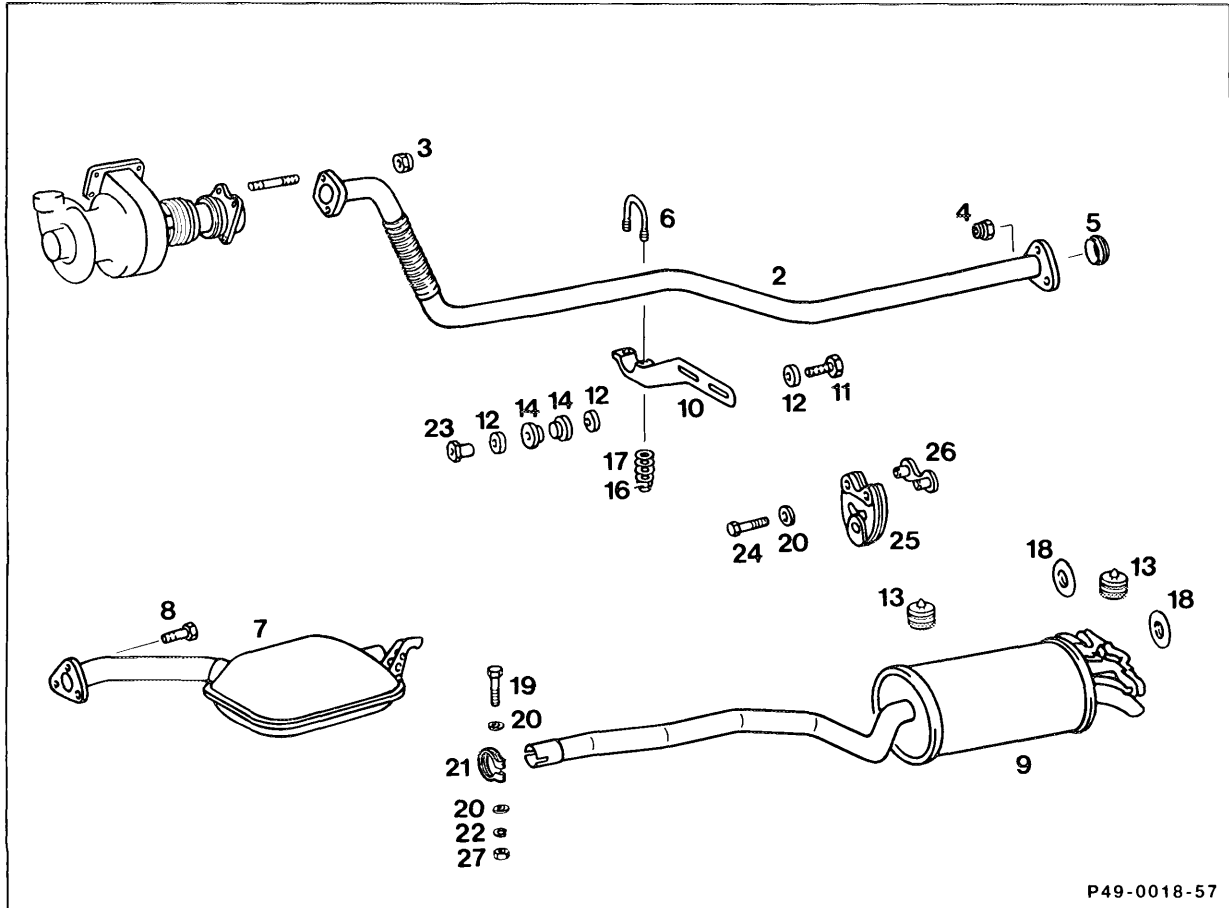


A. Model 201 with Engine 602.96



- | | | |
|---|-------|---|
| Rear muffler (9) | | remove, install, check for damage, replace if necessary. |
| Rubber buffer (13) | | check for wear, replace if necessary. |
| Pipe clamp (21) | | replace. |
| Center muffler (7) | | remove, install, examine for signs of damage, replace if necessary. |
| Hexagon bolts (8) and self-locking nuts (4) | | replace. Tightening torque 20 Nm. |

| | |
|--|--|
| Sintered seal (5) | examine for signs of damage, Ensure correct seating. |
| Retaining bar (6) with Belleville spring washers (17) and self-locking nuts (16) | remove, refit. Tightening torque 7 Nm. |

Installation note

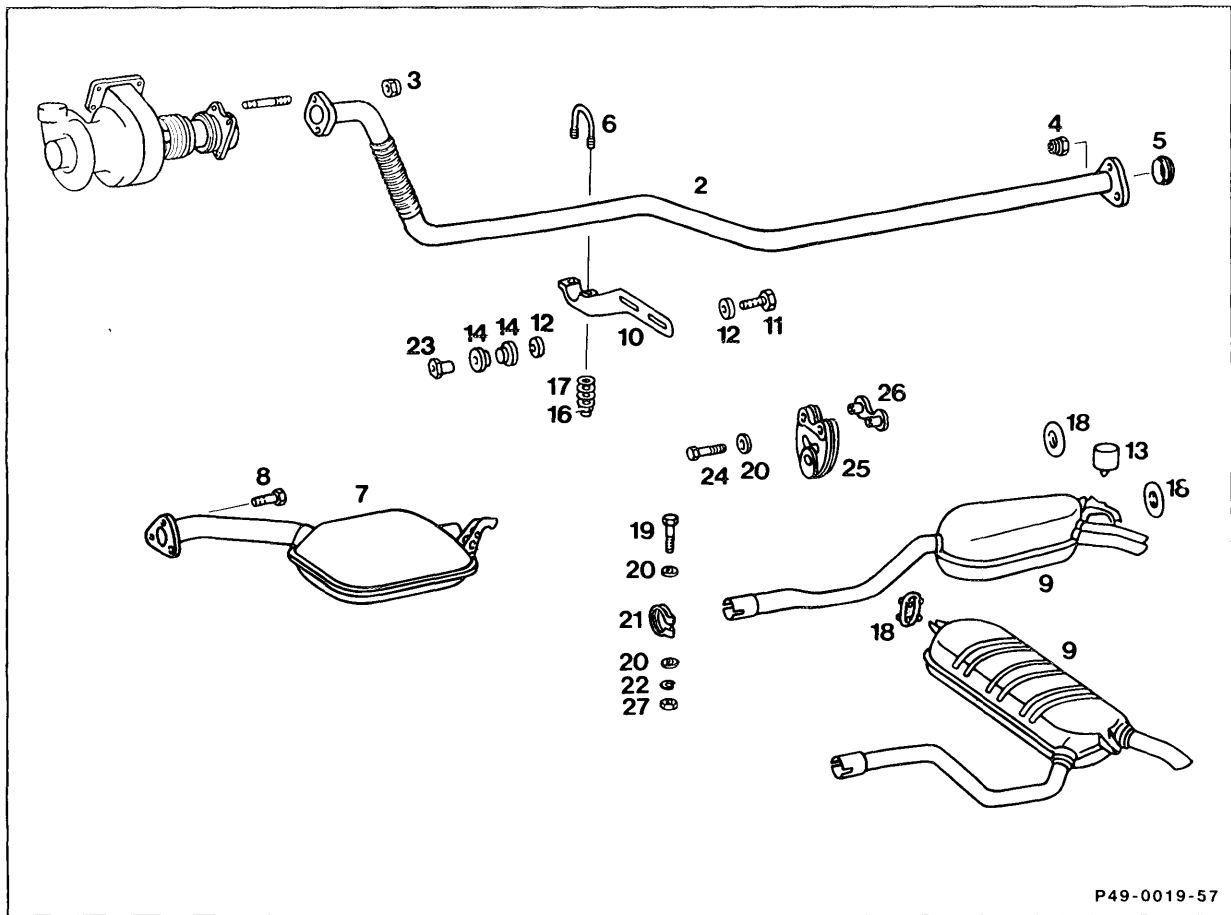
Check parts and replace if necessary.

Caution!

Note pictorial information for assembling Belleville spring washers.

| | |
|---|---|
| Front exhaust pipe with flexible hose (2) | remove, install, check flange for damage, tighten evenly and assemble flexible hose free of tension. Replace self-locking nuts (16), tightening torque 20 Nm. |
|---|---|

B. Model 124 with Engines 602.96, 603.96



P49-0019-57

| | |
|---|---|
| Rear muffler (9) | remove, install, check for damage, replace if necessary. |
| | Tightening torque of nut (27) 20 Nm. |
| Rubber buffer (13) | check for wear, replace if necessary. |
| Pipe clamp (21) | replace. |
| Center muffler (7) | remove, install, check for signs of damage, replace if necessary. |
| Bolts (8) and self-locking nuts (4) | replace. Tightening torque 20 Nm. |
| Sintered seal (5) | check for damage, ensure correct position. |

Retaining bar (6) with Belleville spring washers (17)
and self-locking nuts (16) detach, mount, tightening torque 7 Nm.

Installation note

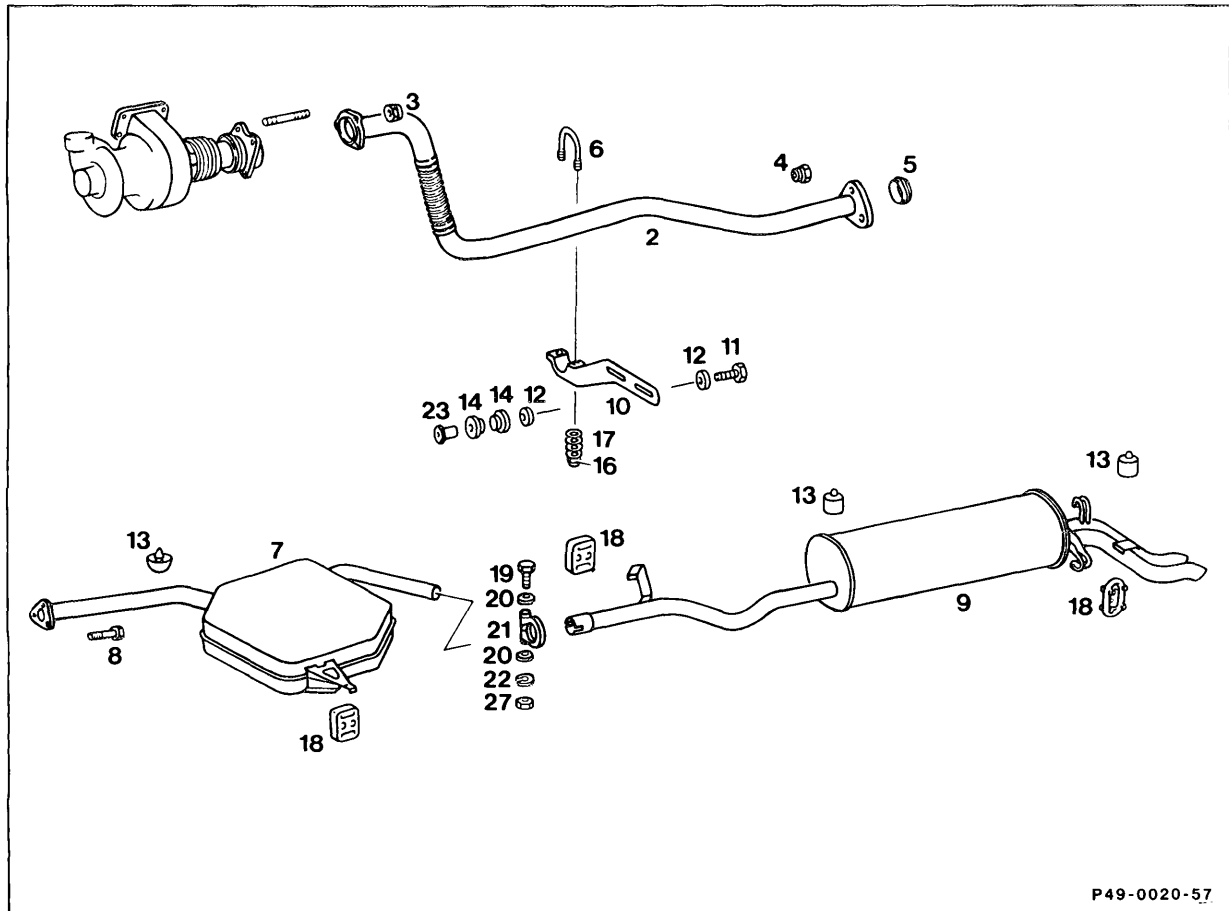
Test parts and replace if necessary.

Caution!

Note pictorial information on assembly of
Belleville spring washers.

Front exhaust pipe with flexible hose (2) remove, install, check flanges for signs of
damage, tighten evenly and install flexible hose
free of tension. Replace self-locking nuts (16).
Tightening torque 20 Nm.

C. Model 126 with Engines 603.96/97



P49-0020-57

- | | |
|---|---|
| Rear muffler (9) | remove, install, check for damage, replace if necessary. |
| | Tightening torque of nut (27) 20 Nm. |
| Rubber buffer (13) | check for wear, replace if necessary. |
| Pipe clamp (21) | replace. |
| Center muffler (7) | remove, install, check for signs of damage, replace if necessary. |
| Bolts (8) and self-locking nuts (4) | replace. Tightening torque 20 Nm. |
| Sintered seal (5) | check for damage, ensure correct position. |

Retaining bar (6) with Belleville spring washers (17) and self-locking nuts (16)

detach, mount, tightening torque 7 Nm.

Installation note

Test parts and replace if necessary.

Caution!

Note pictorial information on assembly of Belleville spring washers.

Front exhaust pipe with flexible hose (2)

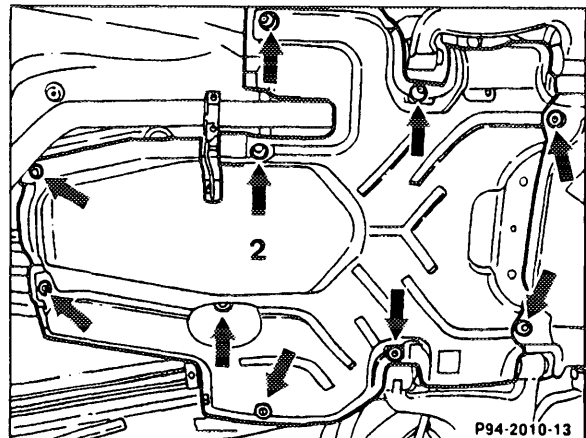
remove, install, check flanges for signs of damage, tighten evenly and install flexible hose free of tension. Replace self-locking nuts (16). Tightening torque 20 Nm.

D. Note

The removal and installation of the exhaust system is not explained in full, but reference is made only to particularly important points which should be noted during removal or installation or when replacing a part, for example, the rear muffler.

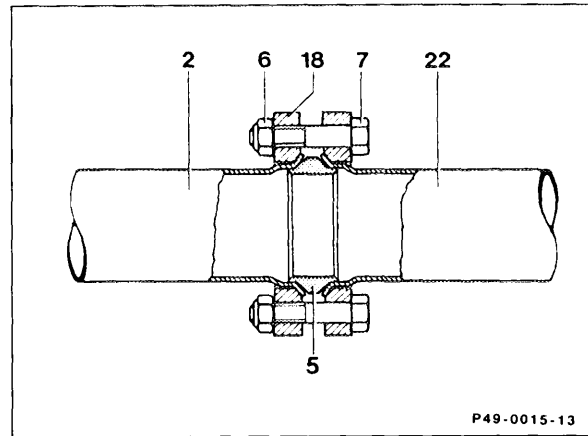
Removal

- 1 Detach rear section of the noise encapsulation when working on the front exhaust system (except Model 126.1).



2 Check hangers for possible reuse, replace if necessary.

3 Before installing the exhaust system, ensure that the flange to the exhaust manifold is not twisted; align flange if necessary. Clean combustion residues off tapered connection fittings of the pipes and sintered seals (2, 5 and 22) with emery cloth, if necessary.

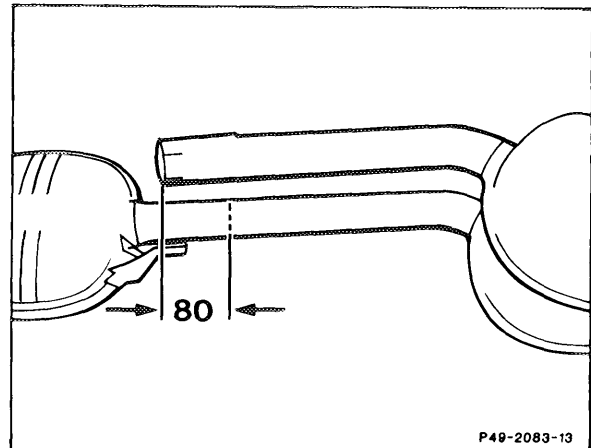


Installation

Replacing rear muffler.

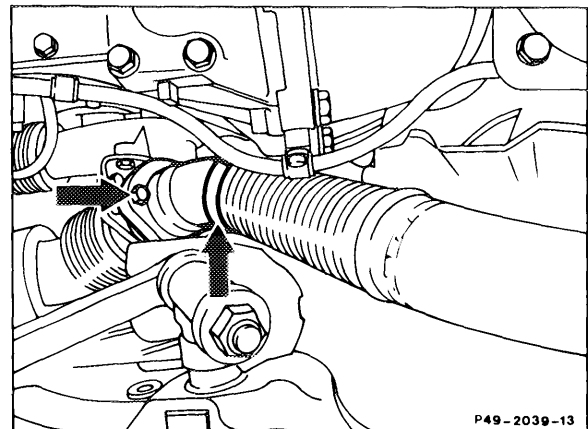
4 Position new rear muffler with push-fit joint precisely over removed system and mark length of pipe of new rear muffler on the removed system.

Cut through the pipe 80 mm from the mark (tolerance minus 10 mm) in the direction of the rear muffler to ensure a push-fit depth of 70-80 mm.



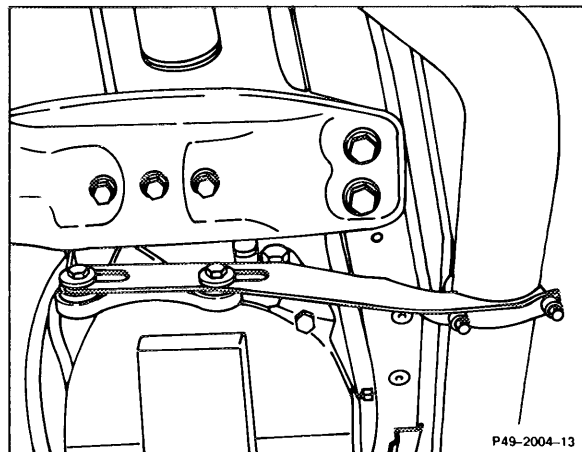
5 Always replace self-locking hexagon nuts.

6 Do not tighten the flange joint to the exhaust gas turbocharger (arrows) until the complete system has been suspended in the rubber rings. Tightening torque of the hexagon nuts 20 Nm.



Arrangement on Models 124, 201

When assembling the front exhaust system to the exhaust gas turbocharger, do not allow the weight of the system to apply tensile stresses to the flexible hose. Use the side support on the transmission as a base.

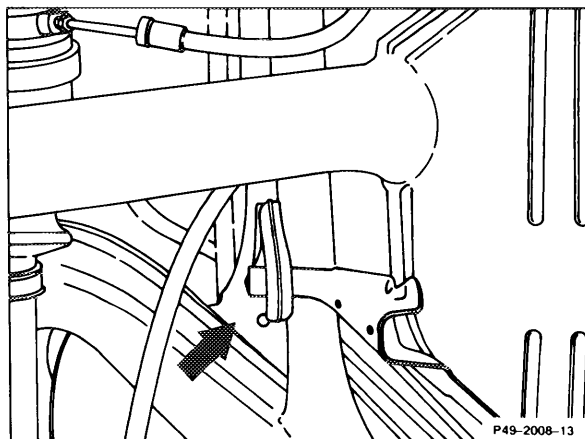


7 Install rear exhaust system with center and rear mufflers, attaching the exhaust system to the rubber hanger on the rear axle mount at the same time.

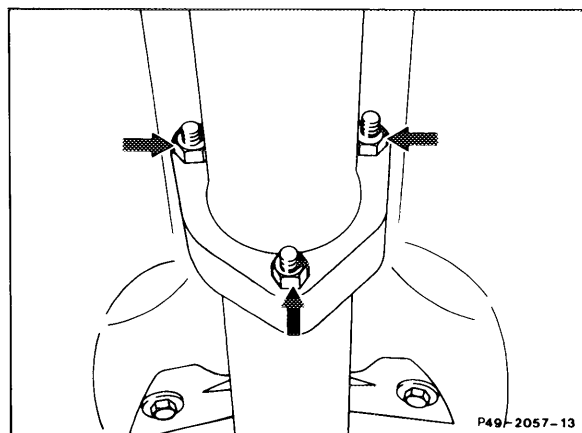
Note

Use a suitable hook to attach the rubber rings on the rear muffler.

Arrangement on Model 124.133



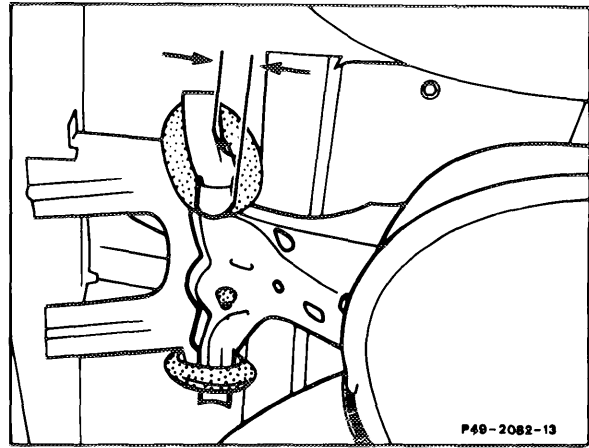
8 Install sintered seal at the flange joint and ensure it is correctly located. Tightening torque of self-locking hexagon nuts 20 Nm (arrows).



9 Install rear mufflers so that the retaining bars of the rear mufflers are positioned 10 mm ahead of the brackets on the frame floor to ensure the correct installed position when the exhaust system expands (arrows).

Note

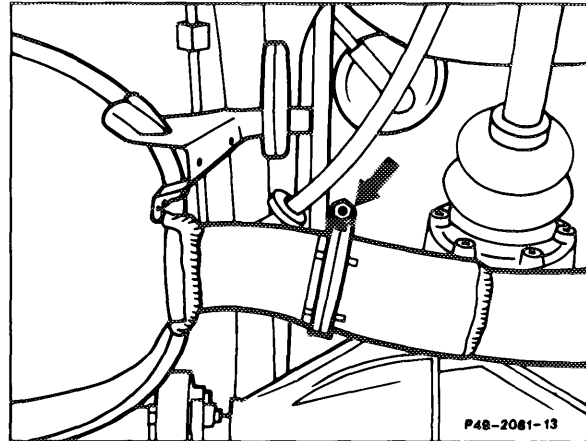
This relates only to mufflers in repair version with push-fit joint between center and rear mufflers.



Arrangement on Model 124.133

10 Install pipe clamp at the push-fit joint between center and rear mufflers so that the clamp is facing outwards toward the emergency brake cable (arrow).

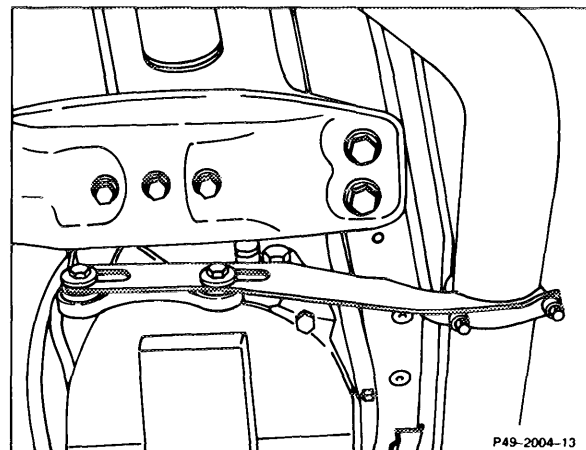
If car is fitted with automatic locking differential (ASD), ensure sufficient clearance between hydraulic line and pipe clamp. Turn hydraulic line away slightly, if necessary.



Arrangement on Models 124, 201

11 Install exhaust side support free of tension. Tightening torque of self-locking hexagon nuts on clamping bar 7 Nm, hexagon bolts of side support on transmission 20 Nm.

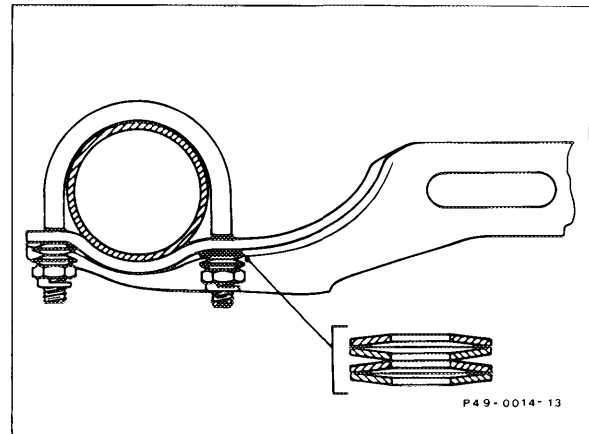
Arrangement on Model 124.133



Note

Install 4 Belleville spring washers on each side of the retaining bar so that the curved faces are facing away from each other (as shown in figure).

12 Run engine and examine exhaust system for signs of leaks.



13 Assemble noise capsule.

