

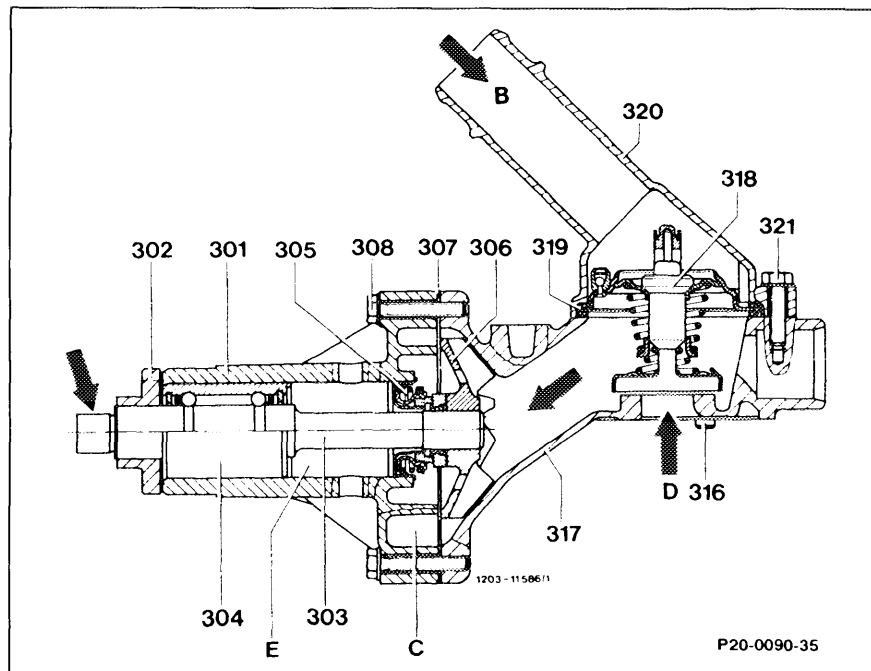
20-215 Notes on coolant pump

General

The coolant pump located at the bottom right of the engine is attached to a light alloy housing bolted to the crankcase. The coolant thermostat (318) is also contained in this housing.

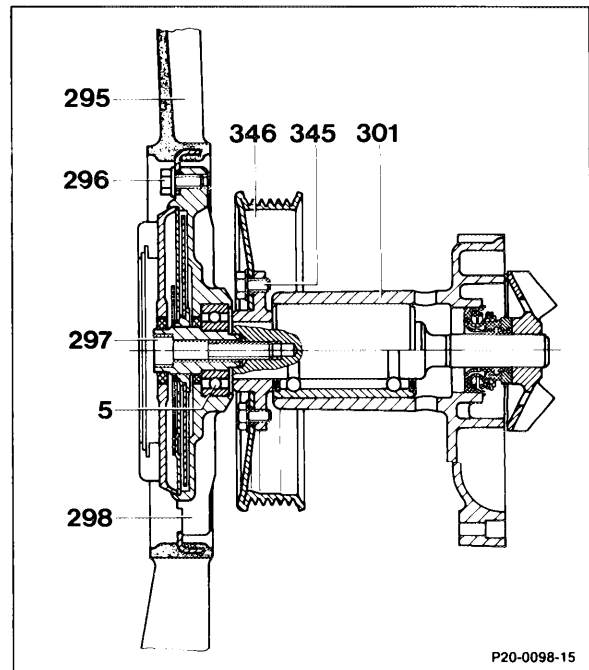
A flange (302) is pressed onto the coolant pump shaft (303) for attaching the belt pulley. An expansion space (E) is located between coolant pump bearing (304) and cassette seal (305). The fan is attached at the stub end (arrow).

- 301 Coolant pump housing
- 302 Flange
- 303 Coolant pump shaft
- 304 Coolant pump bearing
- 305 Cassette seal
- 306 Impeller
- 307 Gasket
- 308 Hexagon bolt
M 6 × 35
- 316 Fit pin
- 317 Light alloy housing
- 318 Coolant thermostat
- 319 Gasket
- 320 Inlet connection
- B Inlet connection to radiator
- C Pump chamber
- D Inlet from crankcase
- E Expansion space



Engine 602 and 603
Arrangement of viscous fan coupling and coolant pump

- 5 Ball bearing
- 295 Fan
- 296 3 bolts M 6 × 14
- 297 Hexagon socket screw M 10 × 40
- 298 Viscous fan coupling
- 301 Coolant pump housing
- 345 4 hexagon bolts M 6 × 12
- 346 Belt pulley

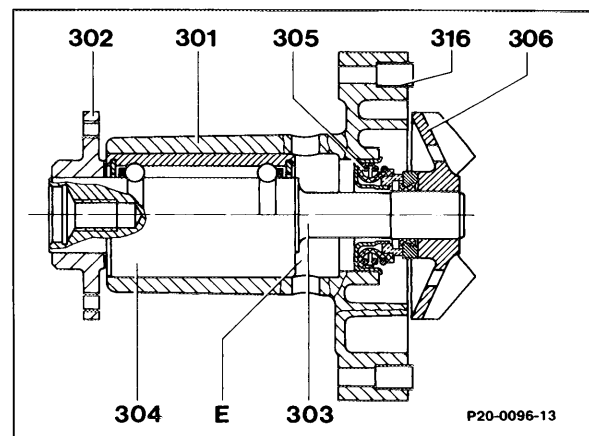


P20-0098-15

The coolant pump of engine 602 and 603 is strengthened at the coolant pump housing (301) and at the coolant pump bearing (304) because of the heavier viscous fan coupling.

The diameter of the impeller (306) on all the engines is identical.

The coolant pump shaft has a tapped hole M 10 × 22 at the front for attaching the viscous fan coupling.



P20-0096-13

- 301 Coolant pump housing
- 302 Flange
- 303 Coolant pump shaft
- 304 Coolant pump bearing
- 305 Cassette seal
- 306 Impeller
- 316 Fit sleeve
- E Deformation space