

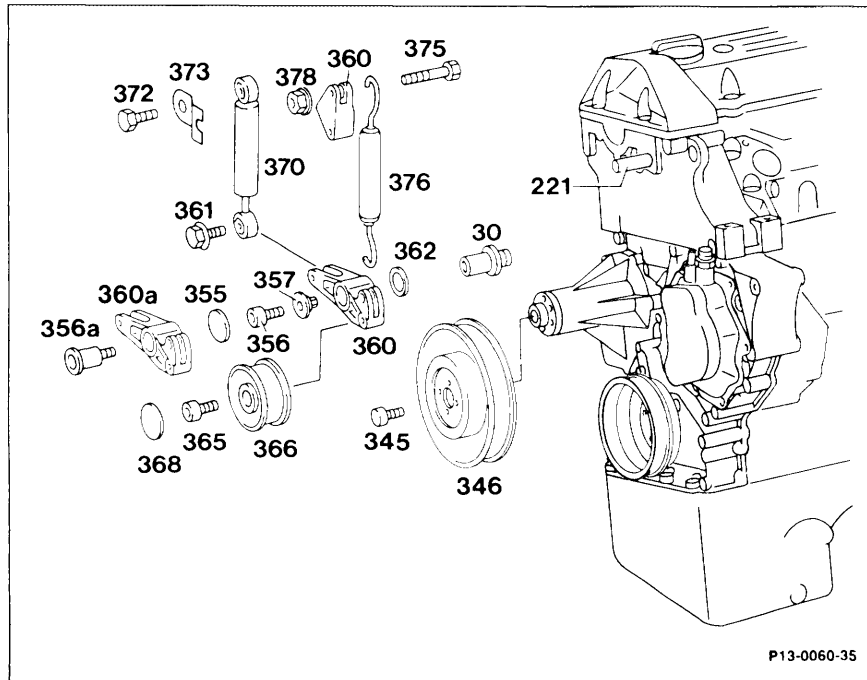
13-345 Removal, installation and dismantling of poly V-belt tensioner

Preceding work:

Fan and fan shroud removed (20-312 or 20-335).

Radiator removed (only Model 201, 126, 20-420).

Poly V-belt removed (13-340).



P13-0060-35

Sealing cap (368)	press off, press on.
Idler pulley (366)	remove, install, 25 Nm.
Pulley (346)	remove, install.
	Hexagon socket bolt, 10 Nm
	Internal Torx bolt, 14 Nm.
Damper (370)	unbolt, install, 25 Nm. Check for function.
Tension spring (376)	remove, assemble.

Tensioner - 1st design:

- Sealing cap (355) remove, install.
- Tensioner (360) remove, install. 10 Nm. Check for condition and wear.
- Bearing pin (30) remove, install, 100 Nm. Clean thread and coat with Omnifit 100 M orange 002 989 23 71.

Tensioner - 2nd design:

- Bearing pin (30) deleted. Use dowel screw fitting bolt (356), 100 Nm. Clean thread and coat with Omnifit 100 M orange 002 989 23 71.

Note

Only the 2nd design is now available as a replacement part. Complete with bearing and close-tolerance bolt.

Adhesives

Omnifit 100 M orange	002 989 23 71
----------------------	---------------

Tightening torques	(Nm)
Hexagon socket bolt on idler pulley	25
Hexagon socket bolt on coolant pump pulley	10
Internal Torx bolt on coolant pump pulley	14
Hexagon bolts on damper	25
Internal hexagon bolt on tensioning lever	10
Bearing pin for tension lever bearing	100
Dowel screw for tension lever bearing	100

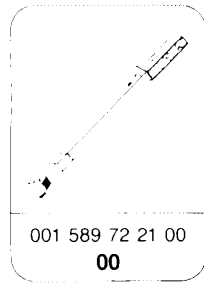
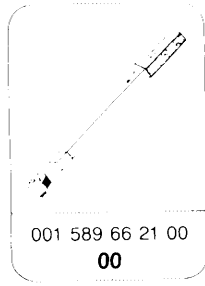
Poly V-belt dimensions

Engine	Poly V-belt layout Poly V-belt length in mm		
	A ¹⁾	B	C
602	-	2030	2100
603	-	2080	2145 (2120) ²⁾

¹⁾ Up to 09 85

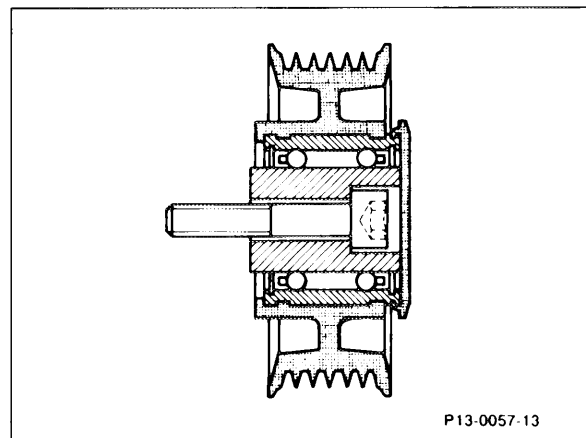
²⁾ Engine 603 970

Special tools



Note

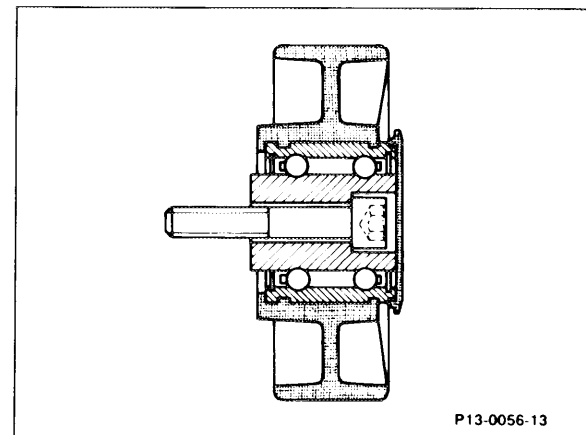
Idler pulleys on vehicles without power steering have grooves for the ribs of the poly V-belt in the running surface.

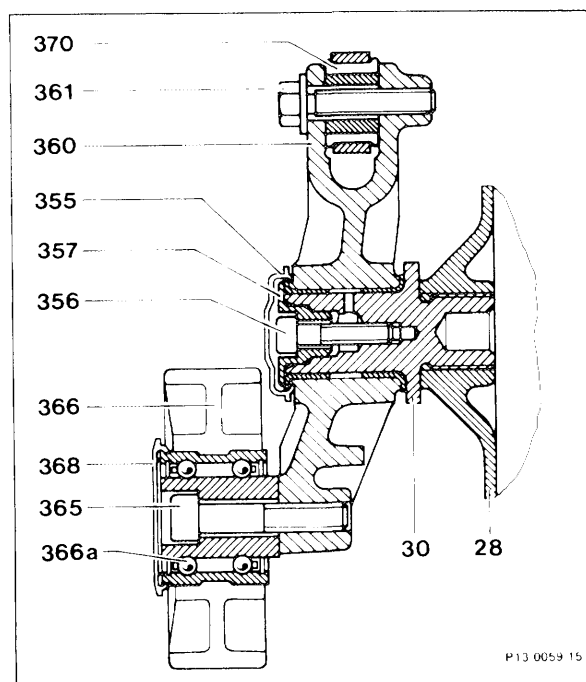


Idler pulleys have flat running surfaces.

Color marking of tension spring:

Vehicles with power steering pump, blue.





- Tension lever (2nd design)
- 28 Timing case cover
- 30a Dowel screw
- 360 Tension lever
- 362 Angular contact ball bearing
- 363 Washer
- 368 Sealing cap

Production breakpoint: 09/85

Model	Engine	Engine end No.		Vehicle identification end No.	
		Manual transmission	Automatic transmission	A	F
124.133 124.193	603.962	–	000016	from start of production	
126.125	603.961	–	000114	from start of production	
201.126	602.911	005966	001372	253369	156861

* not recorded

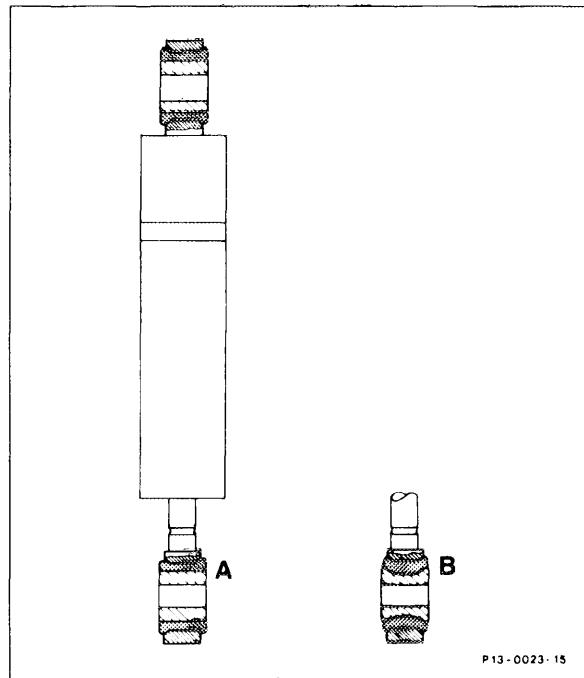
Engine 602

Single-acting damper for belt tensioner, previously double-acting.

Production breakpoint: 05/86

Model	Engine	Engine end No.		Vehicle identification end No.	
		Manual transmission	Automatic transmission	A	F
201.126	602.911	020242	005061	306516	237404

Between 07 89 and 09 89 and from 06 90 the dampers for the tensioner have vulcanized lower rubber bearings.



- A Pressed-on rubber bearing
- B Vulcanized rubber bearing

Production breakpoint: 06/90

Model	Engine	Engine end No.		Vehicle identification end No.	
		Manual transmission	Automatic transmission	A	F
124.128	602.962	004646	005752	*	*
124.133 124.193	603.960	-	027696	*	*
126.135	603.970	-	000878	*	*
201.126	602.911	092299	017772	*	*
201.128	602.961	002615	008097	*	*

* not recorded

Since 03 90 fixing bolts for the power steering pump have been hot galvanized, previously phosphated, for improved surface protection.