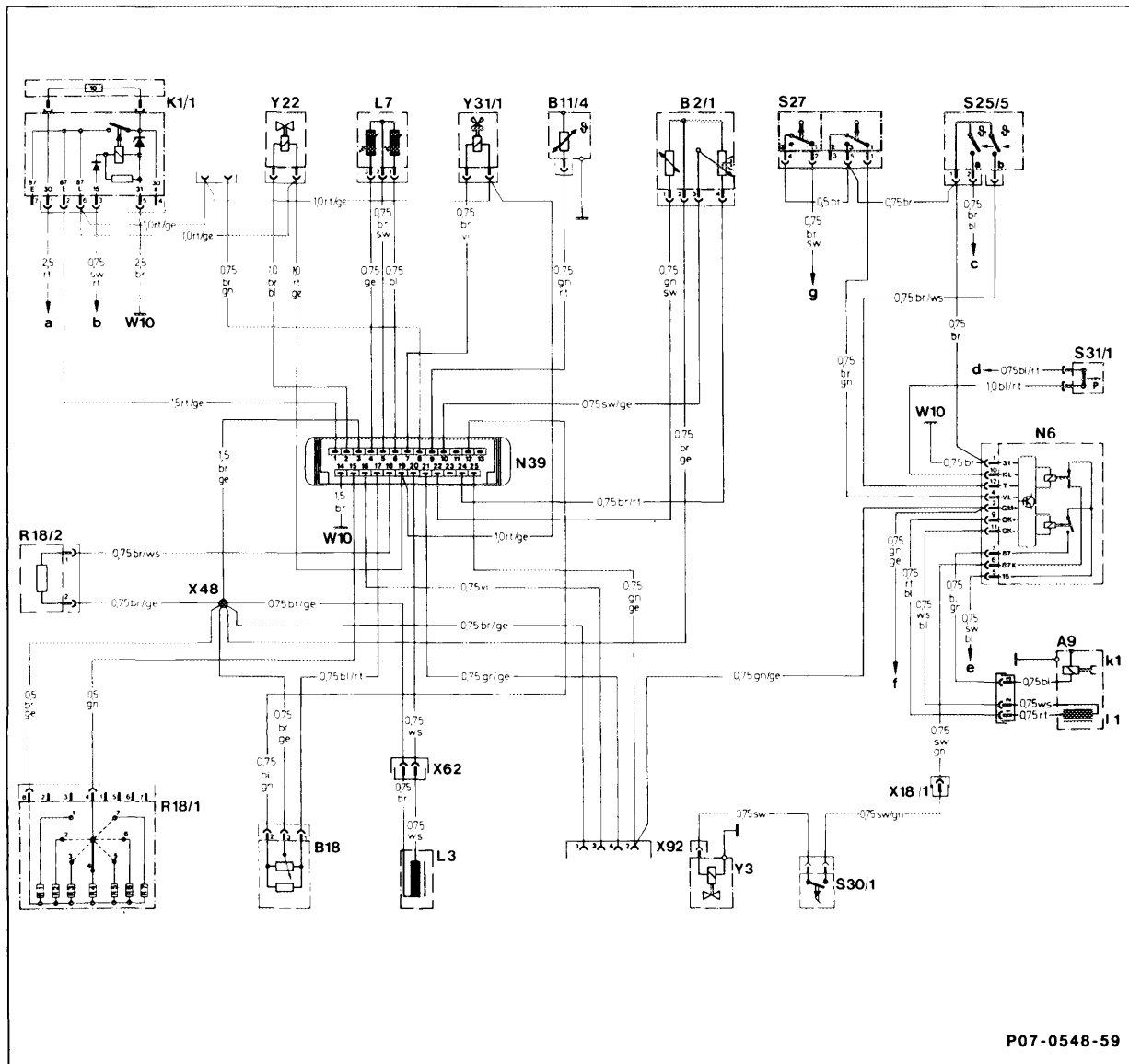


07.1-400 Wiring Diagrams - Turbodiesel



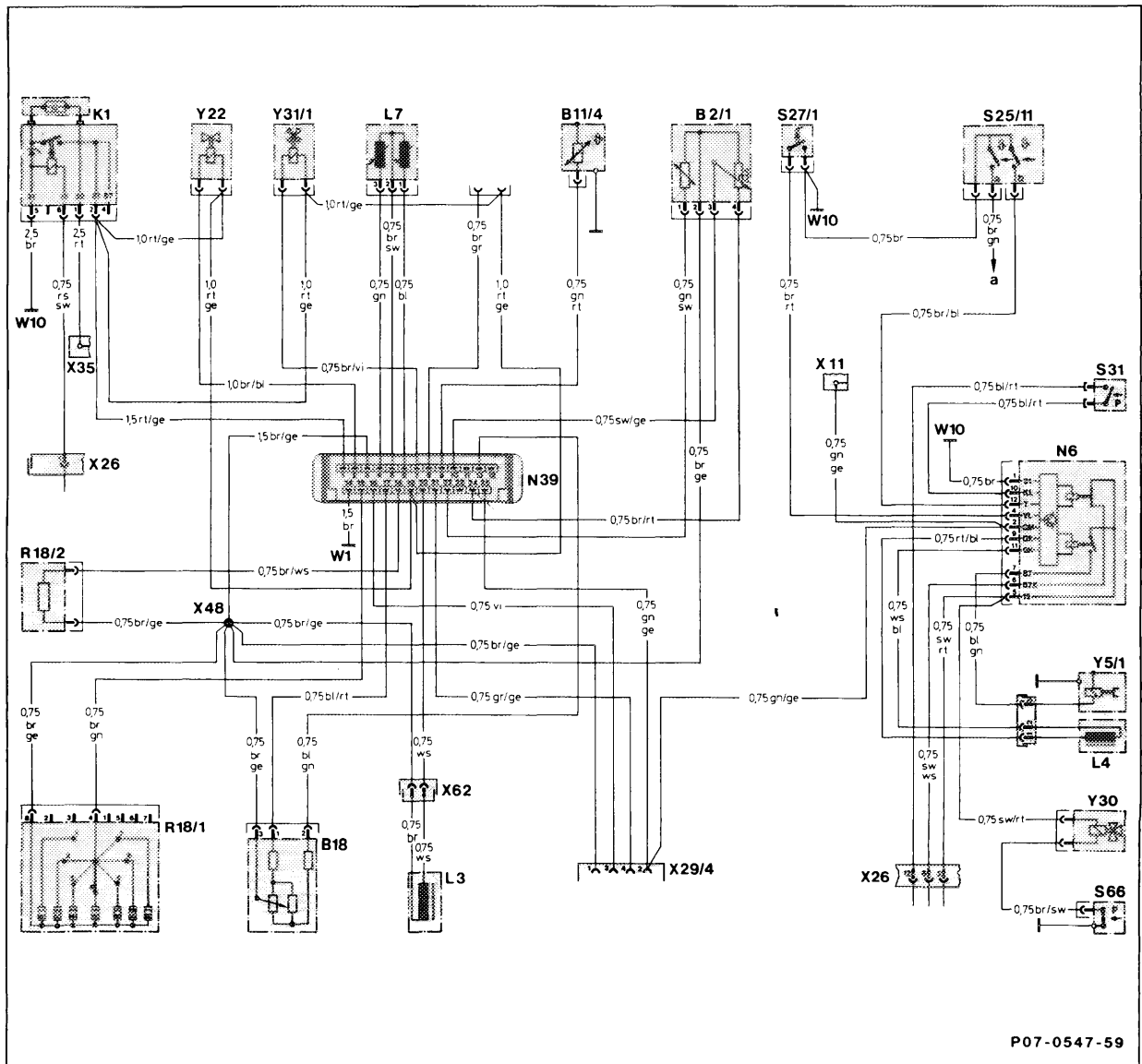
P07-0548-59

Wiring diagram electronic diesel system Engine 602.961 Federal Model 201 Model Year 1987

A9	Refrigerant compressor	X18/1	Plug connection, tail lamp wiring harness/compressor wiring harness
A9k1	Electromagnetic clutch	X48	Sleeve terminal (solder connector)
A9/1	RPM sensor	X62	Plug connection, speed sensor, starter ring gear
B2/1	Air flow sensor potentiometer	X92	Test connection for diagnostics (8-pin)
B11/4	Coolant temperature sensor, idle speed control	Y3	Kickdown valve automatic transmission
B18	Altitude sensor	Y22	Actuator (ELR)
K1/1	Relay, overvoltage protection	Y31/1	Vacuum transducer, exhaust gas recirculation
L3	Engine speed sensor, starter ring gear	a	To terminal block X35, terminal 30/61 (battery)
L7	Control rod travel sensor	b	To electrical centre connector U contact 5
N6	Control unit, compressor shutoff	c	To relay, double auxiliary fan (K8/1) contact 5
N39	Control unit (EDS)	d	To electrical centre connector W contact 4
R18/1	Resistance trimming plug (ELR)	e	To relay, double auxiliary fan (K8/1) contact 4
R18/2	Reference resistor (EGR)	f	To tachometer (A1p7)
S25/5	Temperature switch 105/115°C	g	To switch, engine overload protection (S66)
S27	A/C compressor/charge pressure cut-out microswitch		
S30/1	Kickdown switch		
S31	Pressure switch, refrigerant compressor		
W10	Battery ground		

Note

Ground points not shown go to engine ground or battery ground.

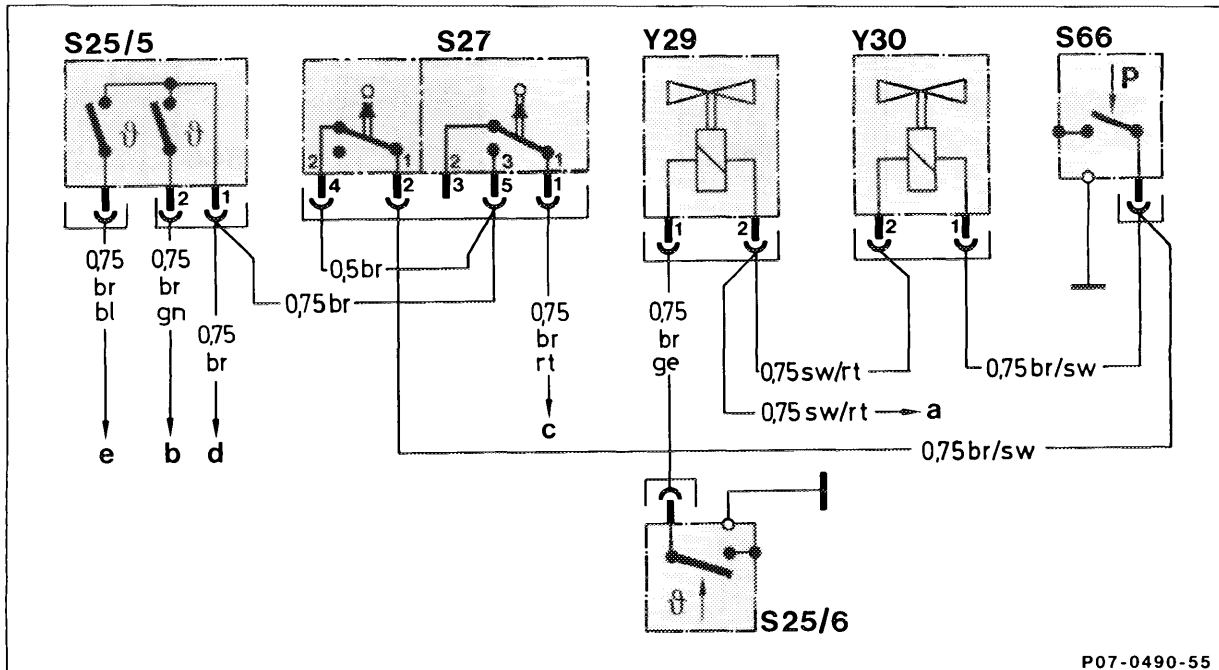


Wiring diagram electronic diesel system Engine 603.96 Federal Model 126 Model Year 1986

B2/1	Air flow sensor potentiometer	X11	Diagnostic socket/terminal block Terminal TD
B11/4	Coolant temperture sensor (EDS)	X26	Plug connection, interior/engine
B18	Altitude sensor	X29/4	Test connection TD, EDS
K1	Relay, over-voltage protection	X35	Terminal block, terminal 30/61 battery
L3	Speed sensor, starter ring gear	X48	Sleeve terminal (solder connector in wiring harness)
L4	Speed sensor, refrigerant compressor	X62	Plug connection, engine speed sensor, starter ring gear
L7	Control rod travel sensor	Y5/1	Electromagnetic clutch, refrigerant compressor
N6	Control unit, compressor shutoff	Y22	ELR actuator
N39	Control unit (EDS)	Y30	Switch-over valve, engine overload protection
R18/1	Resistance trimming plug (ELR)	X31/1	Vacuum transducer, exhaust gas recirculation
R18/2	Reference resistor (EGR)	W1	Main ground behind instrument cluster
S25/11	Temperature switch 105-120°C	W10	Battery ground
S27/1	Microswitch, compressor shutoff	a	To relay, auxiliary fan (k9 contact 5)
S31	Pressure switch, refrigerant compressor		
S66	Switch, engine overload protection		

Wiring diagram electronic diesel system Engine 603.96 California Model 126 Model Year 1986

B2/1	Air flow sensor potentiometer	X26	Plug connection, engine wiring harness
B11/4	Coolant temperature sensor (EDS)	X29/4	Test connection (EDS)
B18	Altitude sensor	X35	Terminal block, terminal 30/61 battery
K1	Relay, over-voltage protection	X48	Sleeve terminal (solder connector in wiring harness)
L3	Engine speed sensor, starter ring gear	X62	Plug connection, engine speed sensor, starter ring gear
L4	Speed sensor, refrigerant compressor	Y5	Electromagnetic clutch, refrigerant compressor
L7	Control rod travel sensor	Y22	ELR actuator
N6	Control unit, compressor cutoff	Y30	Switchover valve, engine overload protection
N39	Control unit (EDS)	Y31	Vacuum transducer, air recirculation valve
R18/1	Resistance trimming plug (ELR)	Y31/1	Vacuum transducer, exhaust gas recirculation
R18/2	Reference resistor (EGR)	W1	Main ground behind instrument cluster
S25/11	Temperature switch 105–120°C	W10	Battery ground
S27/1	A/C compressor cut-out microswitch	a	To relay, auxiliary fan (K9 contact 5)
S31	Pressure switch, refrigerant compressor		
S66	Switch, engine overload protection		
X11	Diagnostic socket/terminal block terminal TD		



P07-0490-55

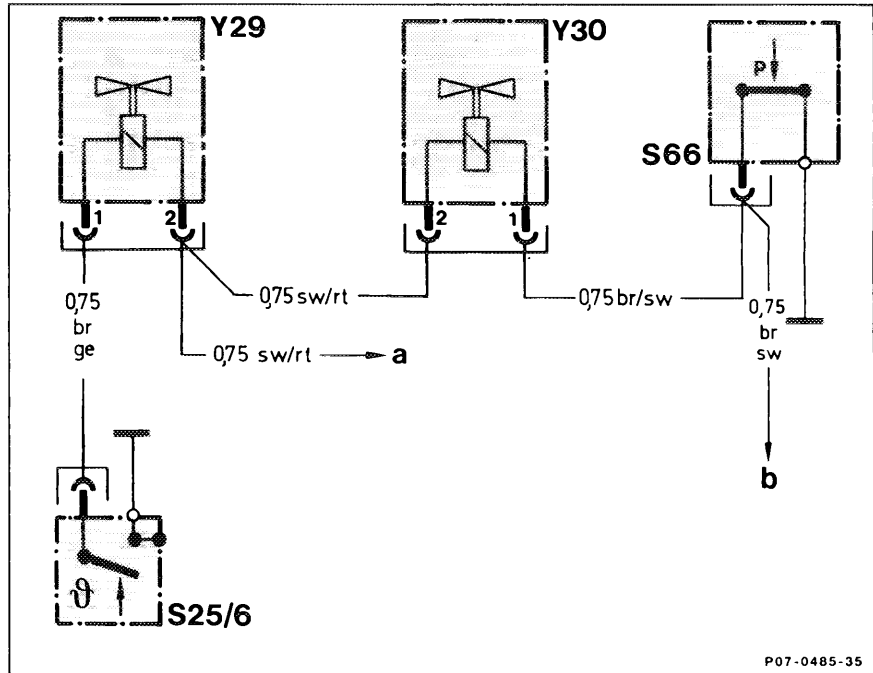
Wiring diagram engine overload protection Engine 602.961 Federal Model 201.128 effective Model Year 1987

- S25/5 Temperature switch 105/115°C
- S25/6 Temperature switch 50°C
- S27 A/C compressor/charge pressure cut-out microswitch
- S66 Switch, engine overload protection
- Y29 Switchover valve, vacuum amplifier
- Y30 Switchover valve, engine overload protection

- a To relay K9 auxiliary fan contact 4
- b To relay K9 auxiliary fan contact 5
- c To control unit N6 compressor cutoff contact 4
- d W10 battery ground
- e To control unit N6 compressor cutoff contact 12

Wiring diagram engine
overload protection
Engine 603.96 Standard
Model 124

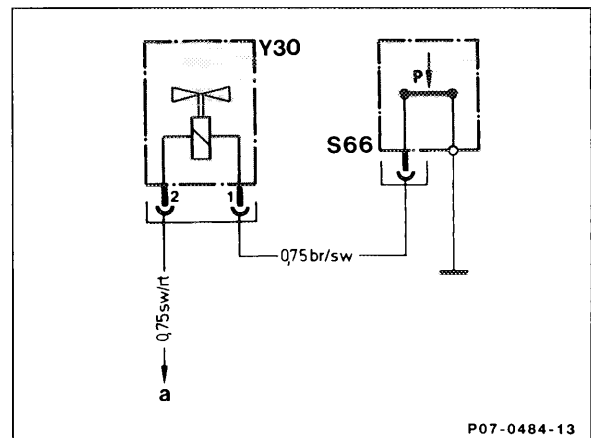
- S25/6 Temperature switch
50°C
- S66 Switch, engine overload
protection
- Y29 Switchover valve,
vacuum amplifier,
automatic transmission
- Y30 Switchover valve, engine
overload protection
- a K9 relay auxiliary fan
terminal 86
- b S27 A/C microswitch,
compressor cutoff or
charge pressure cutoff,
contact 2



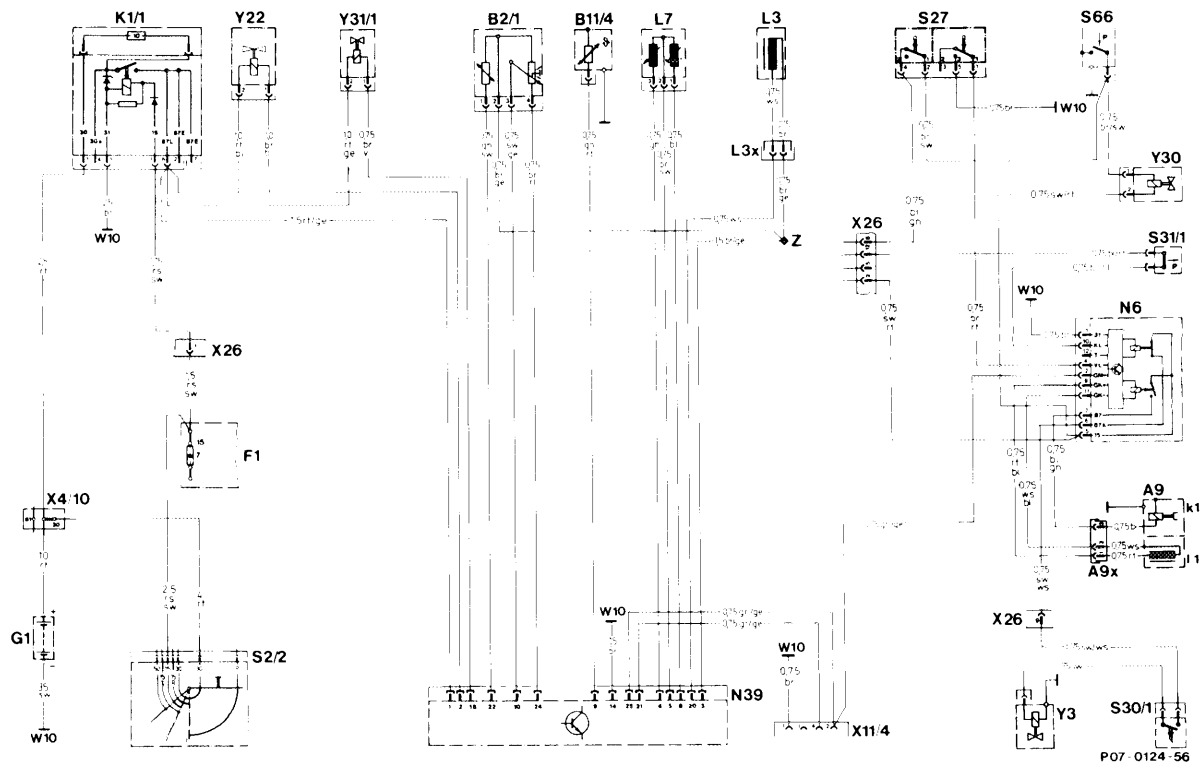
P07-0485-35

Wiring diagram engine overload protection
Engine 603.96 Federal and California
Model 126.125 Model Year 1986

- S66 Engine overload protection switch
- Y30 Switchover valve
- a Control unit, compressor cutoff, contact 5



P07-0484-13



Wiring diagram electronic diesel system Engine 603.970, Model Year 1990 and 1991

A9	Refrigerant compressor	S27	A/C compressor/charge pressure cut-out microswitch
A9k1	Electromagnetic clutch	S30/1	Kick-down switch
A9l1	Engine speed sensor	S31/1	Pressure switch, refrigerant compressor, OFF 2.0/30/ON 2.6/22
A9x1	Plug connection, refrigerant compressor	S66	Switch, engine overload protection
B2/1	Air flow sensor potentiometer with intake air temperature sensor (EDS)	W10	Battery ground
B11/4	Coolant temperature sensor (EDS)	X4/10	Cable connector terminal 30/terminal 61 (battery)
F1	Fuse and relay box	X11/4	Test connector for diagnostics 8-pin (pulse readout)
G1	Battery	X26	Plug connector, interior/engine
K1/1	Relay, over-voltage protection 87E/87L (7-pin)	Y3	Kick-down valve, automatic transmission
L3	Engine speed sensor, starter ring gear	Y22	Actuator (ELR)
L3x1	Plug connection, engine speed sensor, starter ring gear	Y30	Switchover valve, engine overload protection
L7	Control rod travel sensor	Y31/1	Vacuum transducer (EGR)
N6	Control unit compressor cut-out	Z	Connector sleeve (solder connection in cable harness)
N39	Control unit, (EDS)		
S2/2	Close start switch		