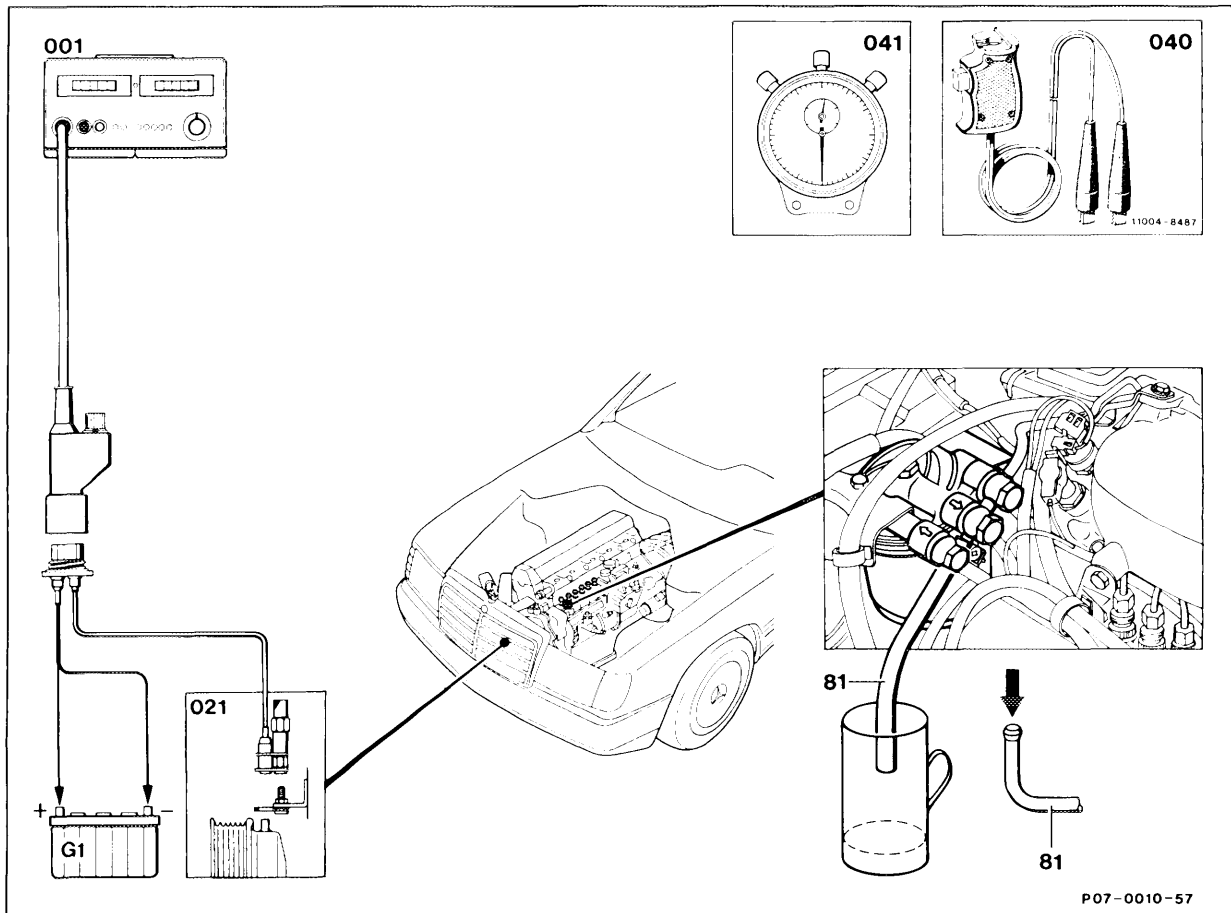


07.1-145 Testing fuel pump - Turbodiesel



- | | |
|--------------------------|--|
| Testers (001, 021) | connect. |
| Return line (81) | disconnect and hold in measuring vessel (approx. 1 l). |
| Glow start switch | move into position "O", the injection pump is in the zero delivery position. |

Note

The return line to the fuel tank must be sealed.

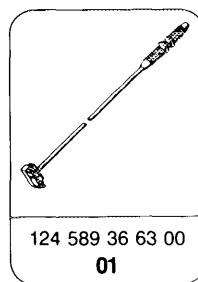
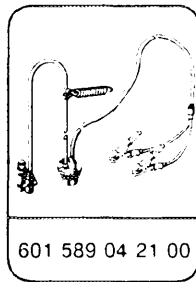
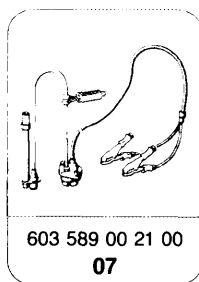
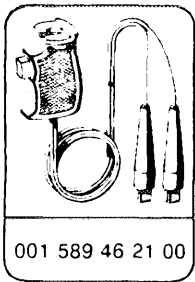
Contact handle (040) connect to terminal 30 and terminal 50 and start engine for 30 seconds. Use stop watch (041). Specification: delivery at least 150 cm³/30 seconds at 150 rpm. Replace fuel filter and/or delivery pump if necessary.

Fuel pressure test (07.1-146).

Test data

Engine	602, 603
Delivery at least 150 rpm	At least 150 cm ³ /30 s
Test condition	Glow start switch in position "0"

Special tools

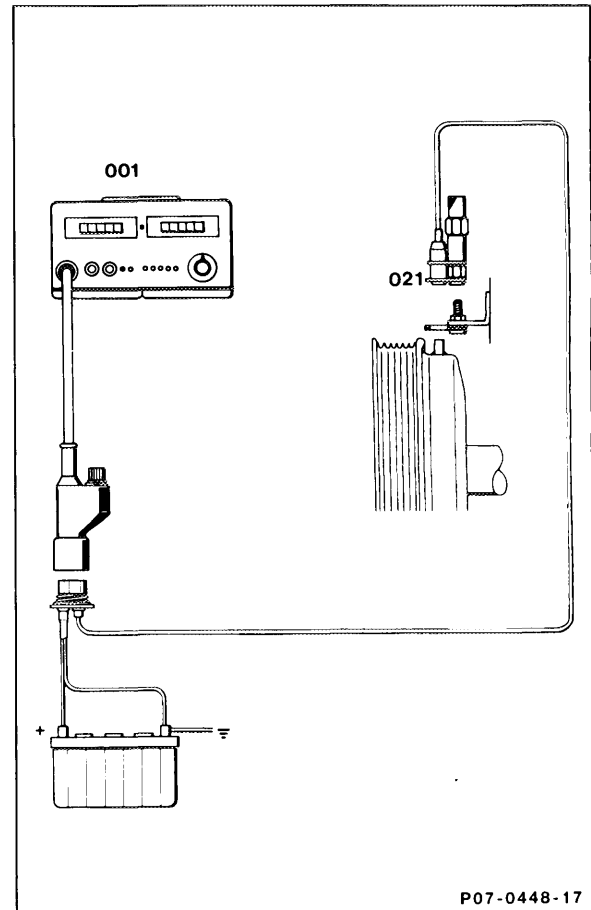


Commercial tools

Digital tester	e.g. Bosch, MOT 001.03
Graduated glass or beaker (at least 1 litre)	
Stop watch	

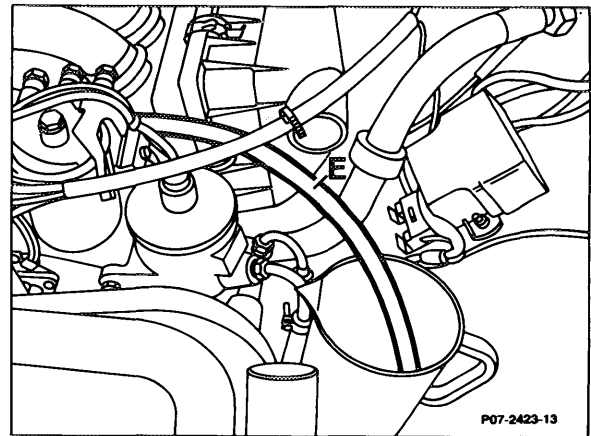
Testing

1 Connect digital tester (001) as shown in connection diagram.



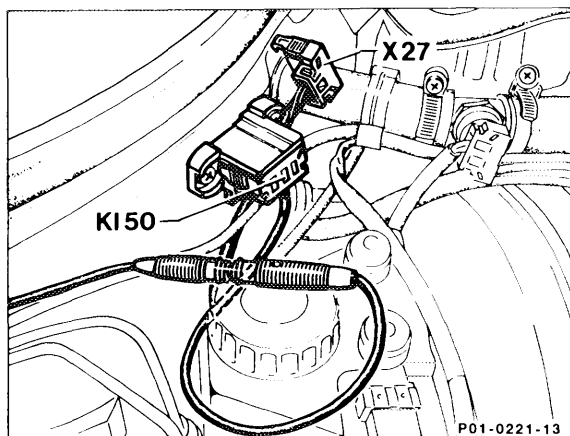
001 Digital tester
021 TDC pulse generator

2 Disconnect return line (E) and hold in measuring vessel.

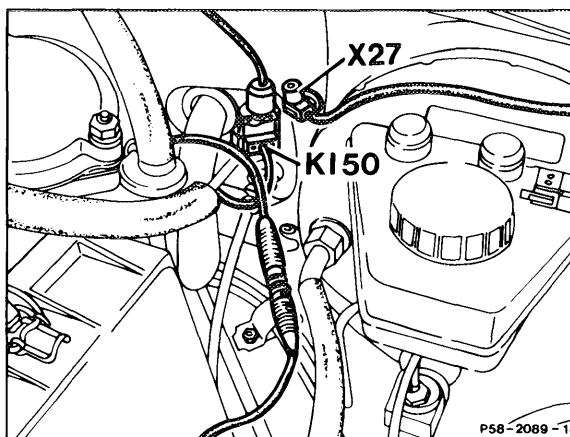


3 Turn glow start switch into position "0", the injection pump is in the "zero" delivery position.

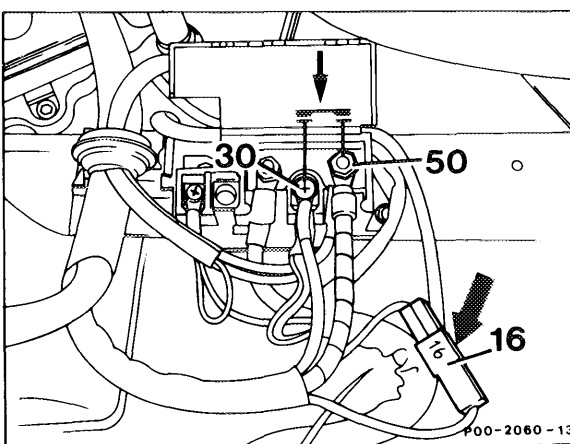
4 Detach connector (X27) and plug adaptor cable to terminal 50.



Model 124



Model 201



Model 126

5 Connect contact handle to adaptor cable or terminal 50 (term. 50) and to terminal 30 (term. 30) and start engine for 30 seconds.
(Starting voltage at least 10 V)

Delivery: at least 150 cm³/30 seconds.

If the specified value is not reached, test fuel pressure (07.1-146).