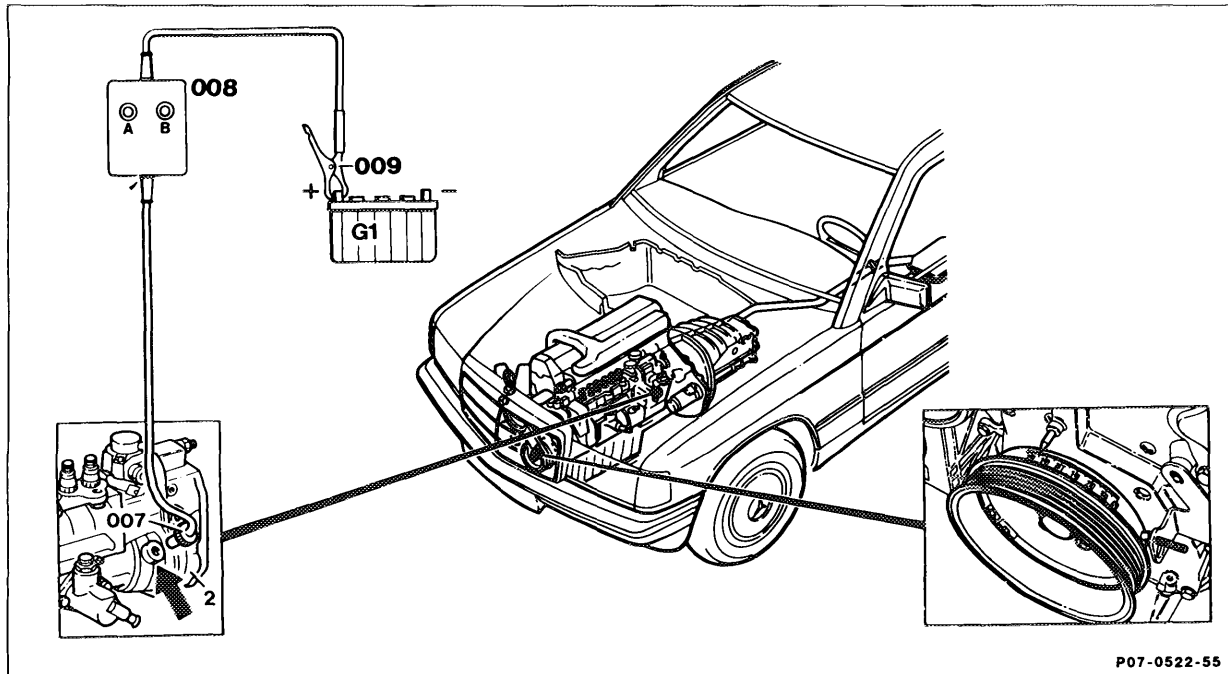


07.1-111 Testing start of delivery (position sensor RIV method) - Turbodiesel



P07-0522-55

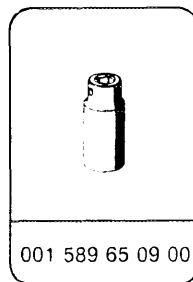
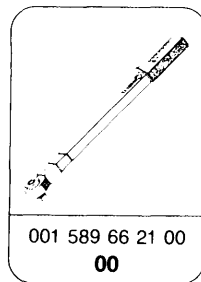
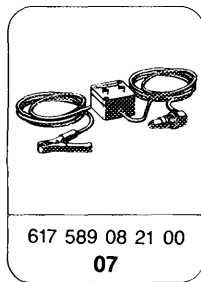
Screw plug (arrow) on governor housing (2)	unscrew, tightening torque 30 - 35 Nm.
Position sensor (007)	install.
Battery terminal (009)	connect to B +.
Crankshaft, crank by hand until	lamps "A" and "B" on indicating instrument (008) light up simultaneously; take reading on scale. Adjust the start of delivery if necessary (07.1-116) RI value (indirect start of delivery).

Test and adjustment data

Engine	Start of delivery (governor pulse) test value, ° ATDC
602.96	15 ± 1
603.96	15 ± 1
602.962 From 09/89	14 ± 0.5 ¹⁾
603.970 From 09/89	14 ± 0.5 ¹⁾

¹⁾ Adjust once 15,000 mi; adjustment value 14.5° ATDC

Special tools

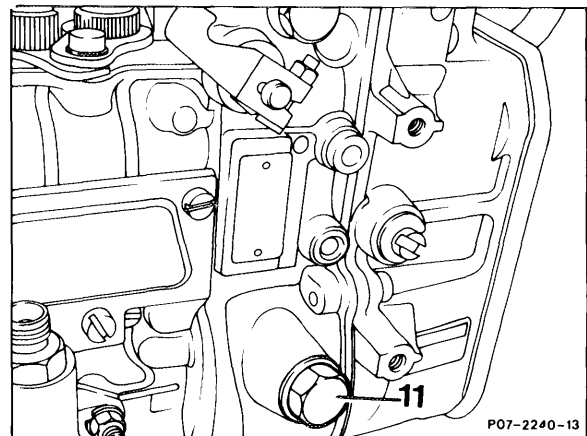


Test

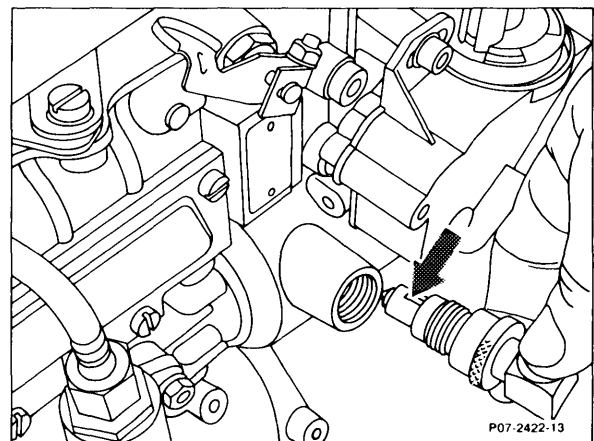
- 1 Remove plug (11).

Caution!

Collect leaking oil.

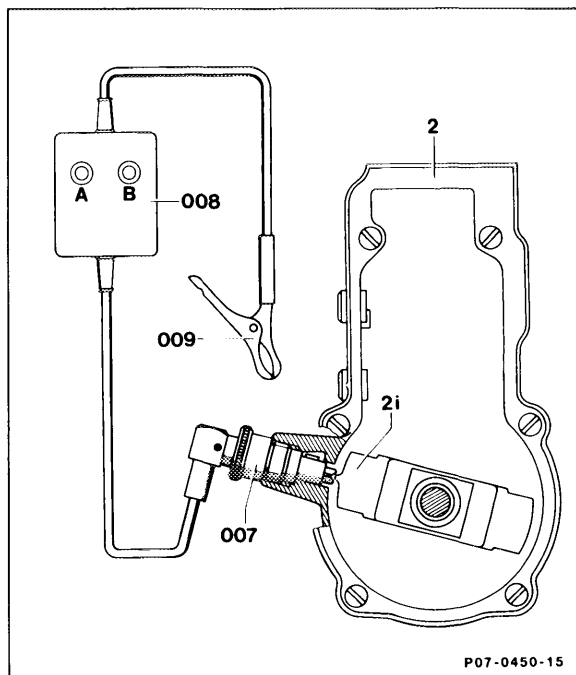


- 2 Install position sensor into governor housing, ensuring that the guide pin of the position sensor (arrow) is facing upwards. Tighten union nut by hand.



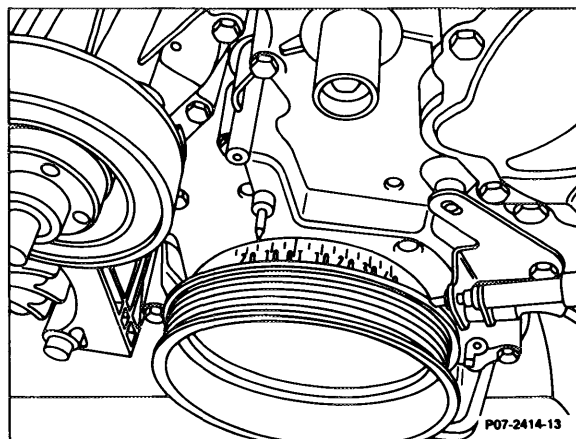
3 Connect position sensor as shown in connection diagram.

- 007 Position sensor
- 008 Indicating instrument
- 009 Battery terminal (battery positive)
- 2 Governor
- 2i Flyweight (RI generator pin)



4 Use special tool to turn crankshaft by hand (in direction of rotation only) until lamp "B" lights up. Turn on carefully until **both lamps "A + B"** light up. In this position take reading of RI value (indirect start of delivery) on the scale.

If only lamp "A" lights up, repeat the test.



5 Remove position sensor.

6 Install plug.
Tightening torque 30-35 Nm.

7 Perform leak tightness inspection with engine running.

8 Check oil level, correct if necessary.