

eBay

eBay Motors > Cars & Trucks > Mercedes-Benz > Other

Item: 200808099632

1986 Mercedes-Benz Other

AMG HAMMER E300 1986 23.3k Miles ALL Options SUPER RARE MINT PORSCHE BMW BENTLEY



Sell one like this

4hzlauctions (703)

Item Location: Rye, New Hampshire, United States

Time left: **6d 05h** (Aug 24, 2012 22:27:55 PDT)

Bid history: 3 bids

Current bid: **US \$5,655.00**
[Reserve not met](#)

Coverage: This vehicle is eligible for up to \$50,000 in Vehicle Purchase Protection when your transaction is completed online through eBay. To qualify you must be the winning bidder on an auction or click the Buy It Now button directly on the eBay site. Restrictions Apply. (Not eligible for eBay Buyer Protection)

Vehicle History Report: [See the report](#)

You've Got Your Eye on a 1986 Mercedes-Benz Other .

We've Got Our Eye on the Vehicle's History.

AutoCheck found 13 records for this 1986 Mercedes-Benz Other .

VIN:WDBEA30D8KA952845 Engine:8
Cylinders
Style / Body:Racing Sedan

Buy AutoCheck Report

POWERED BY **AutoCheck**
vehicle history reports

Shipping

If your vehicle is near you, just make arrangements with the seller to pick it up. If it's further away, you can either fly or drive to the car's location, or you can hire a shipping service to get it delivered to your door. The seller may have additional options available, so check their description for more information.

Important Information From This Seller

Sells to: United States

Buyer is responsible for vehicle pickup or shipping.



Shipping Quotes

Hire an auto transport company to ship this vehicle to your door. Four companies have provided estimated costs for shipping this **1986 Mercedes-Benz Other** from **Rye, New Hampshire 03870** to **Middleton, Idaho 83644** on **09/07/2012**.

Payment

To ensure a smooth transaction, be sure to review all of your options for payment and financing carefully before purchasing this vehicle. Review the seller's payment instructions carefully. If you have any questions, be sure to ask the seller before bidding or sending your payment.

Seller's payment instructions

Full payment due within 7 days of sale: cashier's check, wire transfer
Deposit via PayPal
<p>US \$2,000.00 within 48 hours of auction close.</p> <p> This seller, 4hzlauctions, prefers PayPal.</p>

Payment methods accepted
<ul style="list-style-type: none"> • Personal check • Cashier's Check (certified from US or Canadian bank) or money order • Cash in person • Other - See Seller's payment instructions for payment methods accepted
Full payment
Required within 7 days of auction close.

Financing

Find out more about your options for financing this vehicle. Connect with third-party financing companies that offer competitive rates and helpful services to complete your purchase. Also, be sure to check the seller's description for more options.

VIN:	WDBEA30D8KA952845 See the full History Report	Year:	1986
Number of Cylinders:	8	Make:	Mercedes-Benz
Body Type:	Racing Sedan	Model:	Other
Vehicle Title:	Clear	Trim:	AMG
Options:	Sunroof, Leather Seats, CD Player	Engine:	6.0 Liter
Safety Features:	Anti-Lock Brakes	Drive Type:	Automatic
Power Options:	Air Conditioning, Cruise Control, Power Locks, Power Windows, Power Seats	Mileage:	23,300
Fuel Type:	Gasoline	Exterior Color:	Black
For Sale By:	Private Seller	Interior Color:	Buffalo Leather slate blue

History

An AutoCheck Vehicle History Report is essential when shopping for a used vehicle.

- Check whether an accident has been reported on the vehicle.
- Confirm the reported miles are accurate with AutoCheck's **OdometerCheck**.
- Make sure the title is clean of any reported problems. If the report misses a problem, AutoCheck will buy the vehicle back!

AutoCheck found 13 records for this 1986 Mercedes-Benz Other.

VIN:WDBEA30D8KA952845 Engine:8
Cylinders
Style / Body:Racing Sedan

Special Offer for eBay Customers Only:

- Single Report for \$9.99 - **Save 65%** (reg. \$29.99)

Buy AutoCheck Report

POWERED BY  **AutoCheck**
vehicle history reports

- 10-Pack for \$14.99
- **Save 85%** (reg. \$99.90)

Already purchased a report from AutoCheck?

If you have previously purchased a package of Vehicle History Reports from AutoCheck, please return to the AutoCheck site to view additional reports.

Connect to AutoCheck

Seller's description

HERE is an opportunity to own a legendary super rare hand made original 1986 AMG HAMMER SUPER RACING SEDAN
MINT CONDITION INSIDE AND OUT
23,300 ORIGINAL ADULT OWNED MILES
FULLY FUNCTIONAL
ALL AMG OPTIONS: Buffalo leather, Maple Burlwood, 17 inch wheels, Racing Recaro seats, etc
NEW Stainless Steel AMG spec forever exhaust
NAKAMICHI CD
18 INCH Black MONOCHROME Wheels
ORIGINAL 17 INCH Wheels
BRAND NEW TIRES
BRAND NEW MERCEDES BATTERY
VIN WDB1240231A009909 (Other VIN used just to list auction)

1986 AMG Hammer: Inventing the Mercedes Hot Rod

Take Mercedes 300E, Add 396-hp V8

There are plenty of greats and a few you could call special, but only a handful of cars can truly be described as legendary. The 1986 AMG Hammer falls into the latter category. It's become a kind of cultural myth, a great car by which other great cars are measured.

This is more than just a Mercedes hot rod; it is the car that *invented* the Mercedes hot rod. It came from the mid-1980s, when money seemed to be in the air. Every automotive brand was brimming with confidence and looking to make a statement with speed.

And so it came to be that a small specialist company established in a small German town built a special car. It all started with the simple idea of taking a medium-size sedan and putting a great big engine in it.

It all started with the 1986 AMG Hammer.

Autobahn Runner

There were lots of German companies building specialty cars during the 1980s. If you've ever seen a slope-nose Porsche 911 with a rear wing the size of a picnic table or a Mercedes-Benz with a body-color grille and gold-plated extensions on the fenders, then you're aware of the kind of good taste that prevailed on the German autobahn at the time.

But AMG was a different kind of company. Ex-Mercedes engineers Hans Werner Aufrecht and Erhard Melcher established it in 1976 in tiny Burgstall an der Murr near Stuttgart. Engines were their specialty, the preparation of Mercedes engines for touring car racing in particular. AMG made its name when its Mercedes-Benz 300 SEL 6.8, the V8-powered S-Class of its day, finished the annual 24-hour race at Spa-Francorchamps in 2nd place overall and first in class. (This car, nicknamed "the Red Sow," has been recently re-created by AMG.)

Like every other German tuning company, AMG did a fine business in cars with Recaro seats, ATS wheels and trick paint during the 1970s, but its racing-style engine modifications became more and more popular into the 1980s. And when the first BMW M5 appeared as a concept car in 1984 with its BMW M1 engine, AMG responded to the challenge.

The Hammer

As with the BMW M5, AMG started with a midsize car, the \$39,000 Mercedes-Benz 300E. For \$17,000, AMG would transplant the 5.6-liter M117 V8 of the Mercedes 560 SEC under the hood of the E-Class and then bolt on

DOHC cylinder heads with four valves per cylinder, stretching the performance envelope from 177 horsepower to 355 hp.

For a further \$39,950, AMG would bore out the engine to 6.0 liters and blueprint it, then match it up with a revalved four-speed transmission, a Torsen limited-slip in the largest available rear differential, and a stouter rear subframe to withstand the twist, not to mention a full kit of exterior and interior trim pieces. Once you emptied your pockets of your last \$14,170, you'd get the lower AMG suspension with more aggressive damping, and 17-inch wheels with 215/45VR17 front and 235/45VR17 rear Pirelli P700 tires. Then you'd need another \$18,000 to bolt it all together.

As near as we can figure, the AMG Hammer would cost you \$161,422. Most were built from the four-door version of the W124 body, although the prototype seems to have been a two-door and a wagon was built for a buyer in Chicago. Perhaps as many as 30 cars had some form of the Hammer makeover, each custom-ordered. Even AMG says it can't really be sure about the total.

The Look of the '80s

Back in 1986 you could have had two examples of the Ferrari Testarossa for the price of one loaded AMG Hammer. Not that you'd be any faster at conveying four people in the two Italian cars. At the time, Ferrari quoted a top speed of about 180 mph for the Testarossa, but we're holding in our hands a piece of AMG letterhead stationery (complete with fax number; remember those?) that quotes a top speed for the Hammer of 190 mph. Actually, it says "over" 190 mph.

And we're not merely holding a piece of paper with some relevant facts on the Hammer, as we've also got the keys to one. Not just any Hammer either, but *the* Hammer — AMG's own example. It's a sedan with 6.0 liters of V8 under its hood and looks as good today as it would have in 1986. When you consider how everything else from the 1980s has aged, the Hammer still looks very fresh, for which you can thank the W124's classic proportions from Mercedes Design Director Bruno Sacco.

The W124 is the last of the classic E-Class cars, and the amazing restraint of the AMG body kit (for the time, at least) helps preserve the car's good looks. Given the pastel sport coats and brick-size mobile phones of the 1980s (we were all watching Miami Vice, remember?), the 1986 AMG Hammer is remarkably demure. Its understated lines give no clues regarding the beast within.

Power in the AMG Style

The AMG people looking after this car are understandably nervous. It's been rolled out to celebrate the introduction of the Mercedes-Benz C63 AMG here at Dunsfold Aerodrome in Surrey, England, now famous as the place where *Top Gear* does its Power Laps. The thing is, it's wet — biblically so. It's raining and the pavement is streaming with water, so this is hardly the place for a few quick runs up and down in a car with very old tires and a 6.0-liter V8 putting out what is reckoned to be 396 hp.

The interior is much like any W124. It seems very modern, although the slot for the tape cassette in the audio system gives away the game, as in-car entertainment has moved on in the ensuing decades. The bucket-size ashtray in the center console is also a serious throwback. If you owned a Hammer in the 1980s, you apparently were likely to enjoy a BIG cigar. The speedometer needle can reach for 320 km/h (199 mph) on the AMG-branded central dial, which is just about the only real hint that this isn't just an ordinary E Class.

Finally the weather breaks and we rouse the AMG V8 with a turn of the ignition key. It rumbles into life with a lot more refinement than we expected. In its day this engine's numbers were sensational, some 396 hp and 417 pound-feet of torque. Its peak power is created at 5,500 rpm, where the V8 would be working very hard, while the torque peak is also pretty far around the dial at 4,000 rpm. It's a different sort of power compared to the brutal shove right from idle that you get from AMG's modern, torque-rich 6.2-liter V8.

Hammering the Pavement

To call it slow would be ridiculous, but the 1986 AMG Hammer's most crushing performance is more evident on the move rather than its getaway from a standstill. In its day it was oft quoted to have the legs of contemporary exotics like the Ferrari Testarossa and the Lamborghini Countach between 60 and 120 mph. With a runway to test it, the Hammer confirms its reputation. Once you're rolling, the power builds irrepressibly and the V8 digs ever deeper to drive the Hammer forward. It wouldn't feel odd in a modern super sedan, but you have to recalibrate your senses to 1986, when this level of performance was scarcely believable, especially from a superficially innocuous four-door.

There are only four gears in its autobox, though the Hammer thunders through them relentlessly as it eats up the runway's length. There's little noise, and the predominant sound at speed is that of the wind rushing by. The suspension with its trick electronic-controlled dampers is firm, though the ride feels relatively compliant compared to modern performance sedans with their ultralow-profile tires. The W124's recirculating-ball steering has a weighty amount of effort, but it's a little vague, which is what the Mercedes engineers of the era were after because they were fearful of sensitivity to crosswinds at high speed on the autobahn. The brakes betray the Hammer's age, as they're grumbling after a few high-speed passes.

We'd like to spend some more time getting better acquainted, exploring the finer nuances of the AMG's dynamics, testing the thresholds of the old tires further, but time's not on our side and the weather is growing worse.

The Mercedes Hot Rod

When the 1986 AMG Hammer first rolled out of the company's shop, it caused a stir, but when it reached America, the car became a sensation. European specialty cars had been missing in action for about a decade because of air emissions regulations, but the Hammer arrived just as the drought ended. When Hans Werner Aufrecht initiated a distribution deal with Andy Cohen of Beverly Hills Motoring Accessories, he had no idea that his car would soon appear on the cover of every car magazine in America.

Mercedes-Benz thought the AMG Hammer was such a good idea that it released the Mercedes 500E in 1992. Like the Hammer, it combined the W124 sedan with a V8, though it was the 322-hp 32-valve DOHC 5.0-liter V8 from the Mercedes-Benz 500 SL. Porsche actually prepared the engine and did the installation, and it took 18 days for each car to be transported from the Mercedes assembly plant to an old Porsche facility in Zuffenhausen and then taken back to Mercedes for final assembly. Some 10,359 examples of the 500E (the first car to be called a "four-door Porsche") were built over the course of the model's three years.

Despite the small sales numbers of the AMG Hammer, the company made out. In 1990 AMG and Mercedes concluded a deal to distribute AMG cars through Mercedes-Benz dealers. More important, AMG was commissioned to develop specialty cars for Mercedes itself, first the E60 AMG, a derivative of the Mercedes 500E (only a handful were made), and then the 1993 Mercedes C36. Ultimately AMG became the wholly owned subsidiary of Mercedes-Benz that it is now.

Today every German car manufacturer offers some kind of super sedan, and we've come to take the idea of a 200-mph four-door for granted. But even after all this time, they're all chasing the 1986 AMG Hammer, the car that started it all.

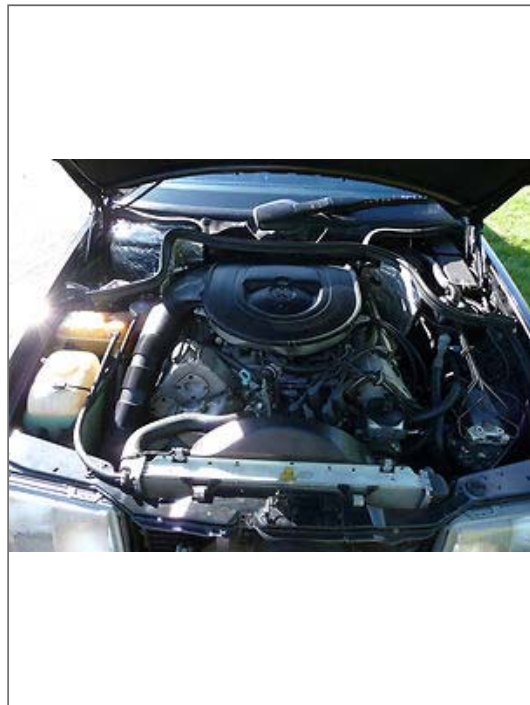
Questions and answers about this item

No questions or answers have been posted about this item.

Listing images









This page is formatted for printing and does not include all the information contained in the listing. You must select all options to print all of the information in the listing including the listing summary, seller's description, and images.

© 1995-2012 [eBay Inc.](#) All Rights Reserved. eBay and the eBay logo are among the registered trademarks of eBay Inc. Kelley Blue Book® and Blue Book® are registered trademarks of Kelley Blue Book Co., Inc. Other trademarks and brands are the property of their respective owners. Some automotive images © eVox Productions LLC, all rights reserved. Use of this Web site constitutes acceptance of the eBay [User Agreement](#) and [Privacy Policy](#).