



Search eBay Motors

Start new search

Search

Advanced Search

- Home
- Buy
- Sell
- My eBay
- Buyer Services & Protection
- Tips & Advice

[← Back to list of items](#)

Listed in category:

[eBay Motors](#) > [Cars & Trucks](#) > [Mercedes-Benz](#) > [E-Class](#)

[? Live Help](#)

1993 Mercedes-Benz : 500-Series w124 500e

Item number: 260179697005

Bidder or seller of this item? [Sign in](#) for your status

[Watch this item](#) in My eBay



[View larger picture](#)

Current bid: **US \$4,050.00**

[Reserve not met](#)

Your maximum bid: **US \$** **Place Bid >**
 (Enter US \$4,100.00 or more)

[Get low monthly payments](#)

End time: **Nov-13-07 14:33:45 PST** (5 days 15 hours)

Shipping: Buyer responsible for vehicle pick-up or shipping. [Vehicle shipping quote is available.](#)

Sells to: United States

Item location: Lemont, IL, United States

History: [17 bids](#)

High bidder: [d***a](#) (18 ★)

You can also:

[Watch This Item](#)

Get [mobile](#) or [IM](#) alerts | [Email to a friend](#)

Meet the seller

Seller: [maksimil](#)
 (★)

Feedback: **100% Positive**

Member: since Nov 2004
 United States

- [See detailed feedback](#)
- [Ask seller a question](#)
- [Add to Favorite Sellers](#)
- [View seller's other items](#)

Contact the seller

[skype](#) [Chat](#)
[Get Skype now](#)

Buy safely

1. **Check the seller**
 Score: 112 | 100
[See detailed feedback](#)
2. **Learn how you are protected**
 Read our [safe buying guide](#)

Listing and payment details: [Show](#)

Description

Item Specifics - Cars & Trucks

1993 Mercedes-Benz : 500-Series w124 500e

1993 mercedes 500E hand build by porche only 1500 in us

Miles: **138000**
 Transmission: **Automatic**

Body Type: **Sedan**

Warranty: **No**
 Title: **Other**

Interior: **Gray**
 Year: **1993**

VIN Number: [wdbea36expb916267](#)
[Get the Vehicle History Report](#)

Condition: **Used** Exterior: **Gray**
 Engine: **8 Cylinder 5.0 Liter EFI** Inspection: **--**
 Fuel Type: **Gasoline**
 For Sale by: **Private Seller**

Standard Equipment:

Cruise Control	Auto Climate Control	ABS	Power Steering
AM/FM Radio	Cassette	500E	2 Wheel Drive
Power Seat Dual	Dual Air Bags	8 Cylinder 5.0 Liter EFI	

Optional Equipment:

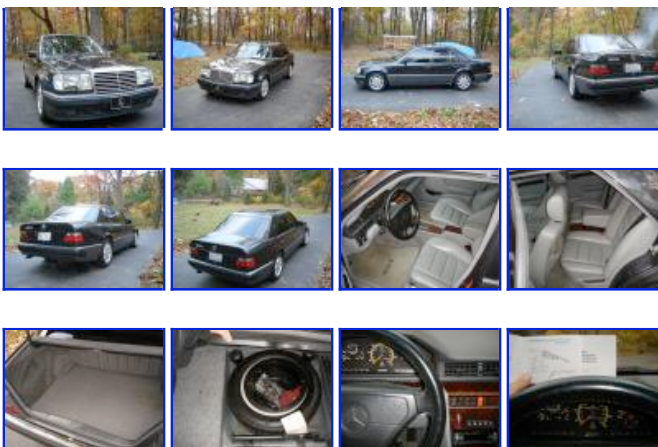
Air Conditioning	Power Door Locks	Power Windows	Leather
CD	Sunroof		

Copyright © 2002 AutoTradeCenter Corp. All Rights Reserved.

Vehicle Description

This is 1993 Mercedes Benz 500E. I own the car since 2006. When I got it had 132000k miles. Car has rebuild title reason for that it had a minor damage to the rear driver side quarter witch was not replaced but repainted. Total \$ paid for fixing the car was 1000\$. My known dealer found this car for me with the damage and fixed . I do have the original front grille and front turn signals. Car has the medical kit. All tools. Air conditioner working heating working heated seats working. Interior is in very good shape. Tires are 90%. All records. The wire harness was replaced . Now few bad thing . Needs I thing an wheel alignment it pulls jus a little to the right not much but I hate that ;) power mirror button don't work. Need a new one. On the trunk plastic that goes above the plaite is cracked you can see in the picture. Front bumper and front fenders have rock chips. For a 93 with 138000 k I think that is not a problem J HISTORY ABOUT THE CAR I believe if you are looking at this car you already know every thing about it but if you don't there it is The quad-cam 5.0 liter V-8 from the 500SL is fitted with firewall modifications done by Porsche, produces 326HP from the factory, and 354 lb-ft of torque on tap combined with 2.82 gearing Between 1991 and 1994, Mercedes sold a sport version of the W124, the Mercedes-Benz 500E, created in close cooperation with Porsche. Each 500E was hand-built by Porsche, being transported back and forth between the Mercedes plant and Porsche's Rossle-Bau plant in Zuffenhausen during assembly---taking a full 18 days to complete each model. Design began in 1989 and into 1991. Between 1992 and 1994, Mercedes/Porsche built a total of 10479 500Es. Of these, 1505 of the "super" sports sedans were imported into the USA between 1992-1994, or roughly 500 cars per year of importation. Called the 500E through model year 1993, in 1994 it was face-lifted along with the rest of the range and renamed the E500. The 500E had a dual camshaft 32-valve V8 engine naturally aspirating 322 hp (240 kW) and 480 N·m (354 ft·lbf), with the engine being derived from the R129 500SL roadster. Sports car braking performance also came from SL components: front SL500 300 mm disks with 4-piston calipers came installed on the 1992 and early 1993 cars. The later 1993, and all 1994 cars came with the upgraded 320 mm set taken from the 600SL. Rear brakes on all years were 277 mm brakes from the 500SL. In the USA, the 500E came fully-loaded, with the only options available to the buyer being a dealer-installed CD changer and an integrated telephone. The 500E was only available as a four-seater, with the four leather seats supplied by Recaro (the fronts heated). Called the "Wolf in Sheep's Clothing" by the press[1][2], performance tests of the day yielded impressive results: 100 km/h (0-62 mph) times of 5.5 seconds and acceleration through the quarter-mile (0.4 km) in 14.1 seconds at 163 km/h (101 mph). Top speed was electronically limited to 250 km/h (~155 mph). It was rated at 16.8 L/100 km (14 mpg) in the city and 13.8 L/100 km (17 mpg) on the highway. With its aggressive stance: 1.5 inches wider track, 0.9 inch lower profile, flared fenders, side skirts, front air-dam and wide tires, the 500E is easily distinguished from its lesser brethren. Because of its look, limited numbers, hand-built construction, and unique pedigree, the 500E is already considered a "classic," even within Mercedes-Benz.

Select a picture



00413

[Free Credit Report & Score From Experian. Learn more.](#)

Shipping and handling

Pickup & Shipping

Buyer is responsible for vehicle pickup or shipping. [Vehicle shipping quote is available.](#)

Deposit via PayPal

US \$500.00 within 48 hours of auction close.



Payment details

Helpful information

Payment method

Marketplace Safety Tip

Required within 7 days of auction close.

Cashier's Check (certified from US or Canadian bank) or money order
eBay Motors - Safe Buying Tips for Vehicles

Cash (in person)

Seller's payment instructions

deposit do in 3 days 500\$. item sold as is . no warRanty .paid in full in 7 days

- NEVER pay for a vehicle by instant cash transfer, such as Western Union or Moneygram.
 - ALWAYS use My Messages to confirm an email asking for account information is from eBay.
 - GET a vehicle history report before purchasing a used car (1981 or later).
- Be Safe - Get all the tips!

Take action on this item

 [Live Help](#)

Item title: Mercedes-Benz : 500-Series

Place a bid

Current bid: US \$4,050.00

Your maximum bid: US \$ (Enter US \$4,100.00 or more)

Place Bid > You will confirm in the next step.

eBay automatically bids on your behalf **up to** your maximum bid. [Learn about bidding.](#)

Other options

[← Back to list of items](#) | [Report this item](#) | [Printer Version](#) | [Sell one like this](#)

Seller assumes all responsibility for listing this item.

[About eBay](#) | [Announcements](#) | [Security Center](#) | [Buyer Services & Protection](#) | [Policies](#) | [Site Map](#) | [Help](#)

Copyright © 1995-2007 eBay Inc. All Rights Reserved. Designated trademarks and brands are the property of their respective owners. Use of this Web site constitutes acceptance of the eBay User Agreement and Privacy Policy.