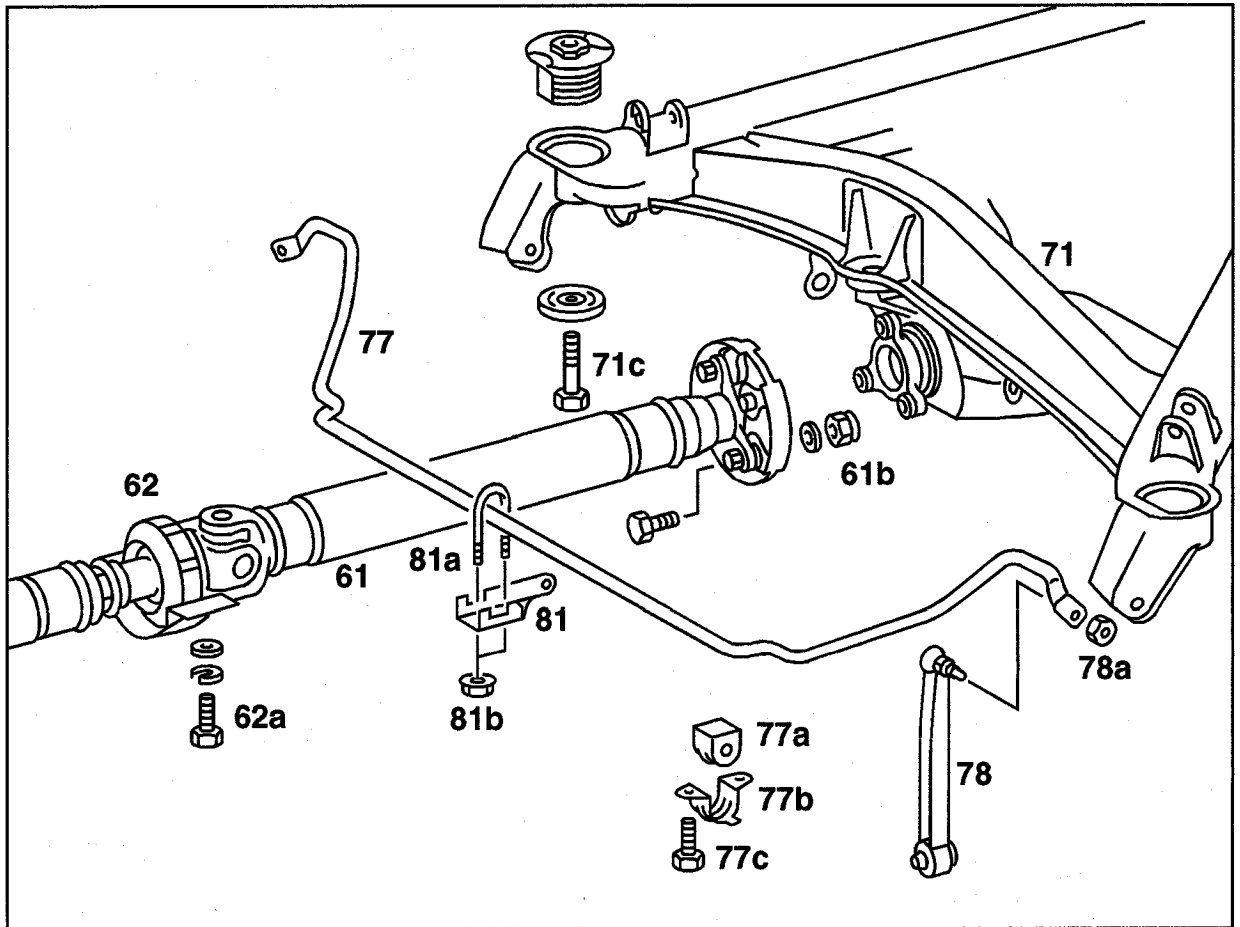


32-310 Removing and installing rear torsion bar



P32.20-0220-57

Vehicle	lift at rear, lower, remove rear wheels, reinstall. Lug bolts 110 Nm.
Connecting rod (78)	unscrew of torsion bar (77), screw on (items 2, 9, 17). Replace self-locking hex. nut (78a), 30 Nm.
Mounting bracket (77b)	unscrew of frame floor, screw on (items 3, 12). Replace self-locking hex. bolts (77c), 28 Nm.
Propeller shaft intermediate bearing (62)	unscrew of frame floor, screw on (items 4, 15). Replace self-locking bolts (62a), 25 Nm.
Propeller shaft (61)	unscrew of rear axle center assembly, screw on (items 5, 14). Replace self-locking hex. nuts (61b), tightening torque M10 = 40 Nm, M12 = 60 Nm.

30000-30000

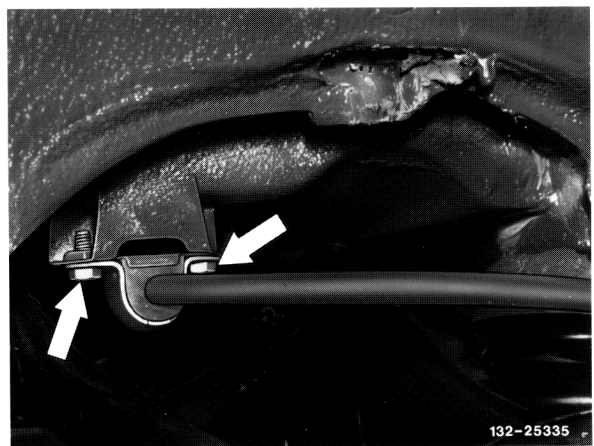
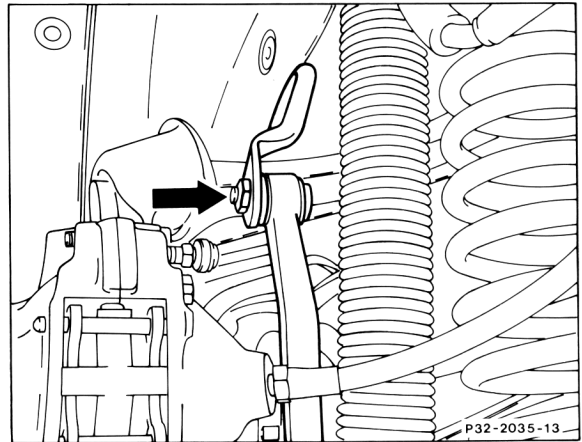
ABS speed sensor	remove, install (item 6, 16). Replace self-locking Allen bolts, 8 Nm.
Rear axle center assembly	support with car jack or pit lift.
Rear axle (71)	screw both front mounts off of frame floor, screw on and lower rear axle slightly (items 7, 13). Replace self-locking hex. head bolts (71c), 70 Nm.
Torsion bar (77)	remove, install (items 8, 11).

Vehicles with level control

Self-locking nut (81b)	unscrew, screw on, replace. Remove mounting bracket (81a) and lever (81), reinstall. When assembling ensure that lever (81) is properly seated on surface on torsion bar (77)!
------------------------------	--

Removal

- 1 Lift vehicle at rear, remove rear wheels.
- 2 Unscrew both hex. nuts (arrow) for left and right connecting rods.
- 3 Unscrew hex. head bolts for torsion bar mount on frame floor, remove rubber mount.



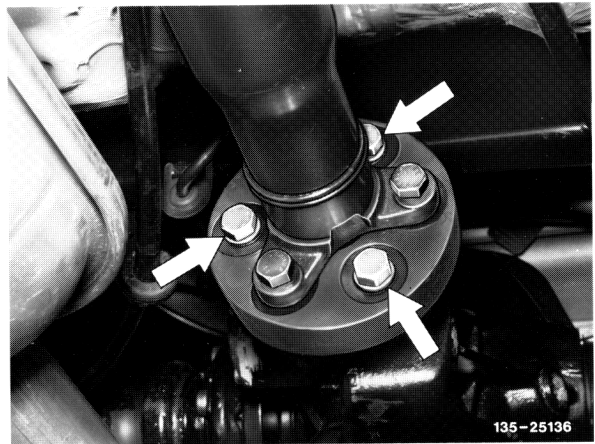
- 4 Loosen propeller shaft intermediate bearing.



- 5 Separate propeller shaft from rear axle center assembly.

Note:

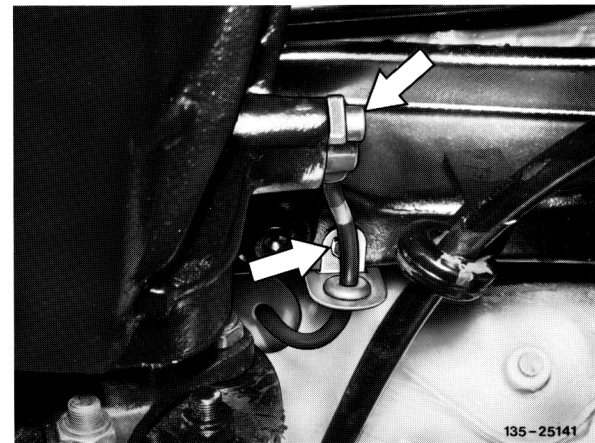
After removing the 3 bolts you must pry the drive shaft forward.



- 6 On vehicles with ABS remove speed sensor together with cable (arrows) after loosening Allen screw.

Note:

This step can be skipped. Just watch the cable when lowering the subframe, and make sure it is not under tension.

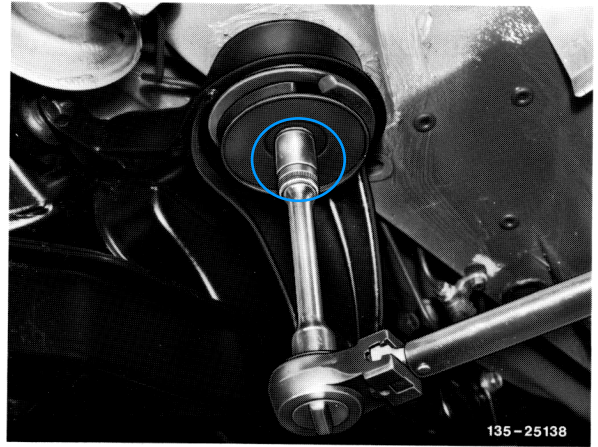


- 7 Unscrew both hex. head bolts for rear axle front mount on frame floor while supporting rear axle center assembly with car jack.



Note:

These 2 bolts were installed with thread locker from the factory, and require quite a bit of force to remove!

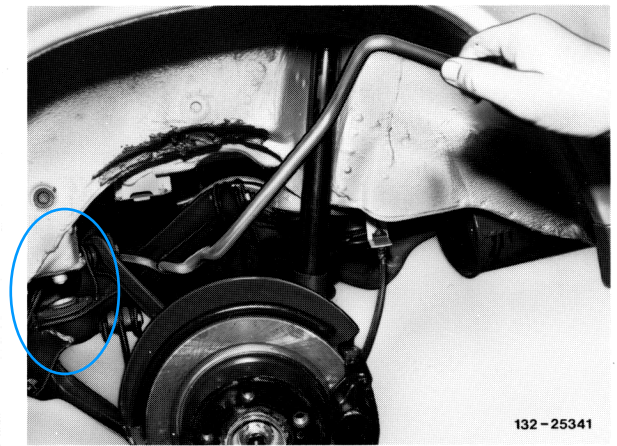


135-25138

8 Lower rear axle slightly and remove torsion bar to left after turning as required.

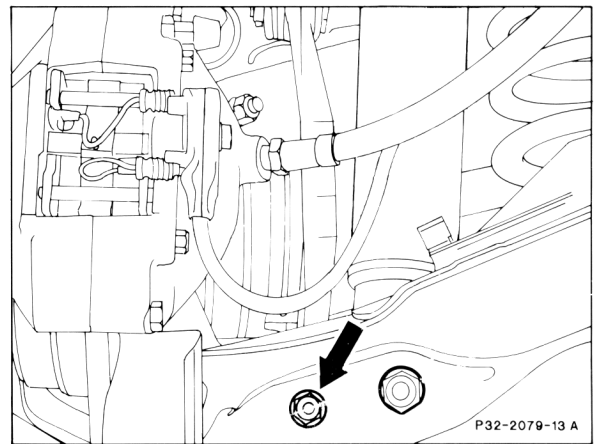
Note:

Notice gap between subframe mount and the body, lower it as little as required to remove the bar. Remember to watch the ABS cable!



132-25341

9 If it is also necessary to remove the connecting rod, remove it after screwing off the hex. head bolt with nut (arrow) (spring link cover removed).



P32-2079-13 A

Installation

10 Check rubber mounts for torsion bar and connecting rods, and replace if necessary.

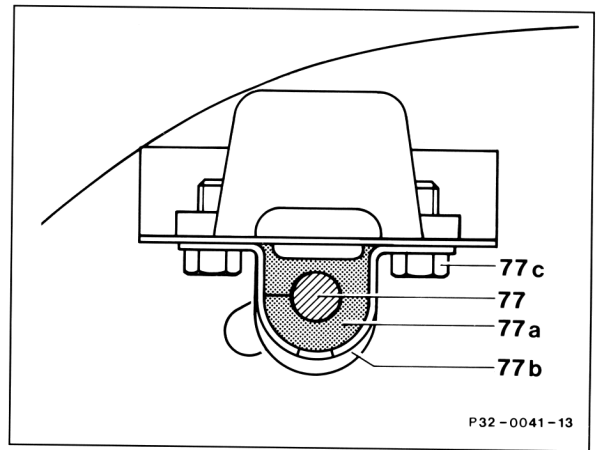
11 Insert torsion bar so that torsion bar arm offset points downwards and toward rear of vehicle (arrow).

Slide on left and right rubber mounts (slit toward front).

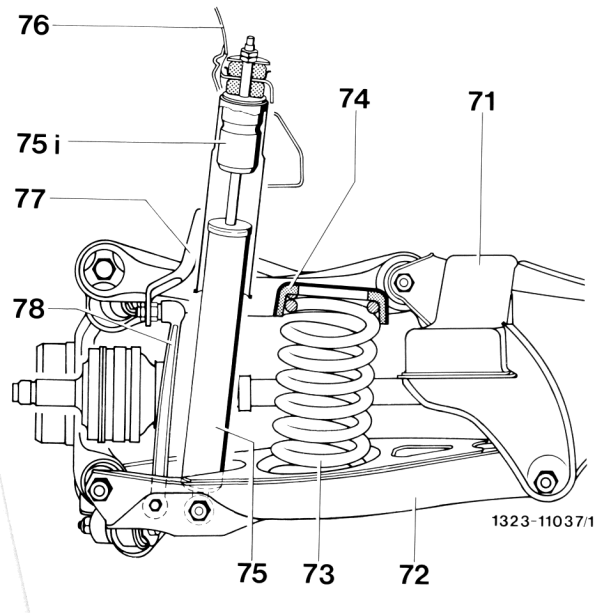


12 Fasten torsion bar to frame floor with mounting bracket on left and right. Tightening torque for new self-locking hex. head bolts 20 Nm.

- 77 Torsion bar
- 77a Rubber mount
- 77b Mounting bracket
- 77c Hex. head bolt



- 71 Rear axle carrier
- 72 Spring link
- 73 Rear spring
- 74 Rear spring rubber mount
- 75 Shock absorber
- 75i Rebound stop
- 76 Dome on frame floor
- 77 Torsion bar
- 78 Connecting rod for torsion bar



Installation

10 Check rubber mounts for torsion bar and connecting rods, and replace if necessary.

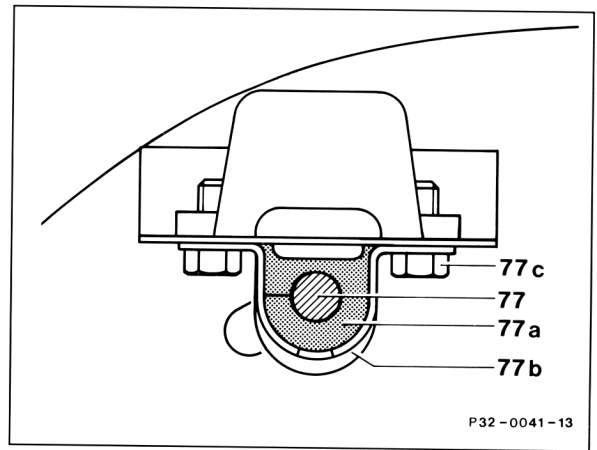
11 Insert torsion bar so that torsion bar arm offset points downwards and toward rear of vehicle (arrow).

Slide on left and right rubber mounts (slit toward front).



12 Fasten torsion bar to frame floor with mounting bracket on left and right. Tightening torque for new self-locking hex. head bolts 20 Nm.

- 77 Torsion bar
- 77a Rubber mount
- 77b Mounting bracket
- 77c Hex. head bolt



- 71 Rear axle carrier
- 72 Spring link
- 73 Rear spring
- 74 Rear spring rubber mount
- 75 Shock absorber
- 75i Rebound stop
- 76 Dome on frame floor
- 77 Torsion bar
- 78 Connecting rod for torsion bar

